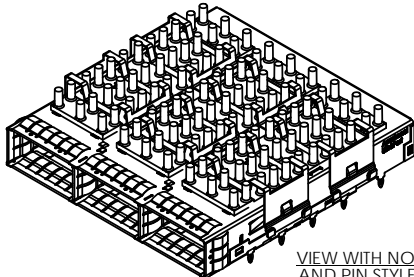


AMPHENOL PART NUMBER CONFIGURATION  
U95 - L3X1 - 1XXX

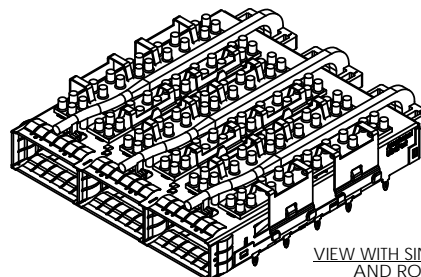
HEAT SINK OPTION

- 1 = NO HEAT SINK OR CLIP SHIPPED  
5 = ROUND PIN STYLE (H=6.5mm; SAN HEIGHT)--(NOT AVAILABLE WITH QUAD LIGHT PIPE)  
6 = ROUND PIN STYLE (H=4.2mm; PCI HEIGHT)--(NOT AVAILABLE WITH QUAD LIGHT PIPE)  
7 = ROUND PIN STYLE (H=13.5mm; TALL)--(NOT AVAILABLE WITH QUAD LIGHT PIPE)  
A = SQUARE PIN STYLE (H=6.5mm; SAN HEIGHT)  
B = SQUARE PIN STYLE (H=4.2mm; PCI HEIGHT)  
C = SQUARE PIN STYLE (H=13.5mm; TALL)  
N = PIN-FIN STYLE FOR SIDE TO SIDE AIR FLOW (H=6.5mm; SAN HEIGHT)  
P = PIN-FIN STYLE FOR SIDE TO SIDE AIR FLOW (H=4.2mm; PCI HEIGHT)  
R = PIN-FIN STYLE FOR SIDE TO SIDE AIR FLOW (H=13.5mm; TALL)  
Y = EXTRUDED FIN STYLE FOR FRONT - BACK AIR FLOW (H=6.94mm)  
W = EXTRUDED FIN STYLE FOR FRONT - BACK AIR FLOW (H=8.72mm)

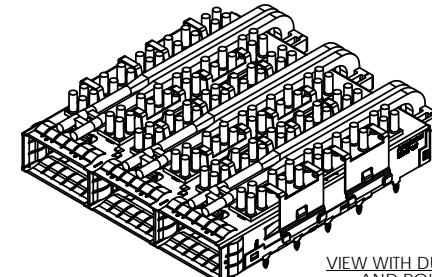
NOTE: FOR DIMENSION "H" SEE SHEET 2



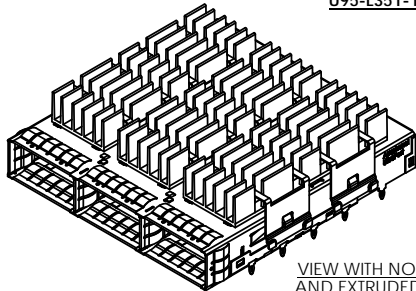
VIEW WITH NO LIGHT PIPE  
AND PIN STYLE HEAT SINK  
U95-L351-100A



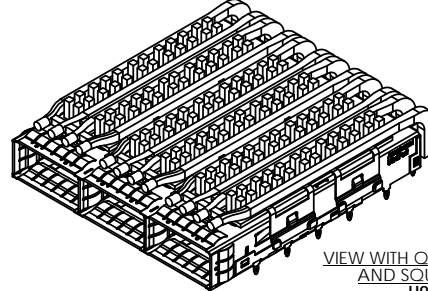
VIEW WITH SINGLE BARREL LIGHT PIPE  
AND ROUND PIN HEAT SINK  
U95-L361-107A



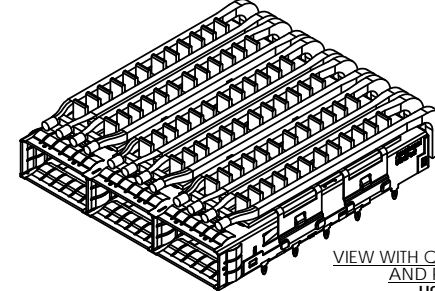
VIEW WITH DUAL BARREL LIGHT PIPE  
AND ROUND PIN HEAT SINK  
U95-L351-101A



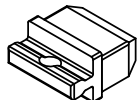
VIEW WITH NO LIGHT PIPE  
AND EXTRUDED HEAT SINK  
U95-L3W1-100A



VIEW WITH QUAD BARREL LIGHT PIPE  
AND SQUARE PIN HEAT SINK  
U95-L3A1-104A



VIEW WITH QUAD BARREL LIGHT PIPE  
AND PIN FIN HEAT SINK  
U95-L3N1-104A



CONDUCTIVE DUST COVER  
SHOWN (OPTIONAL)  
(P/N U90-1401-8000-BP)

DO NOT SCALE DRAWING

THIS DOCUMENT CONTAINS PROPRIETARY INFORMATION AND SUCH INFORMATION MAY NOT BE DISCLOSED TO OTHERS FOR ANY PURPOSE  
OR USED FOR MANUFACTURING PURPOSES WITHOUT PERMISSION FROM AMPHENOL CANADA CORP.



REVISIONS			
REV.	DESCRIPTION	DATE	APPROVED
D	ADDED HEAT SINK OPTIONS	JAN 19/15	Alvin.C
E	PCB FRONT EDGE NOTE ADDED	APR 23/15	Alvin.C
F	COMPLIANT PIN LEAD IN TIP SHORTENED FOR THINNER B2B PCB APPLICATION	JUL 10/15	Alvin.C

PACKAGING OPTIONS

- 1 = TRAY PACKAGING, (FOR HEAT SINK OPTION 1 "OPEN TOP" ONLY)  
A = TRAY PACKAGING, (HEAT SINK & CLIP SHIPPED ASSEMBLED, IF ORDERED)

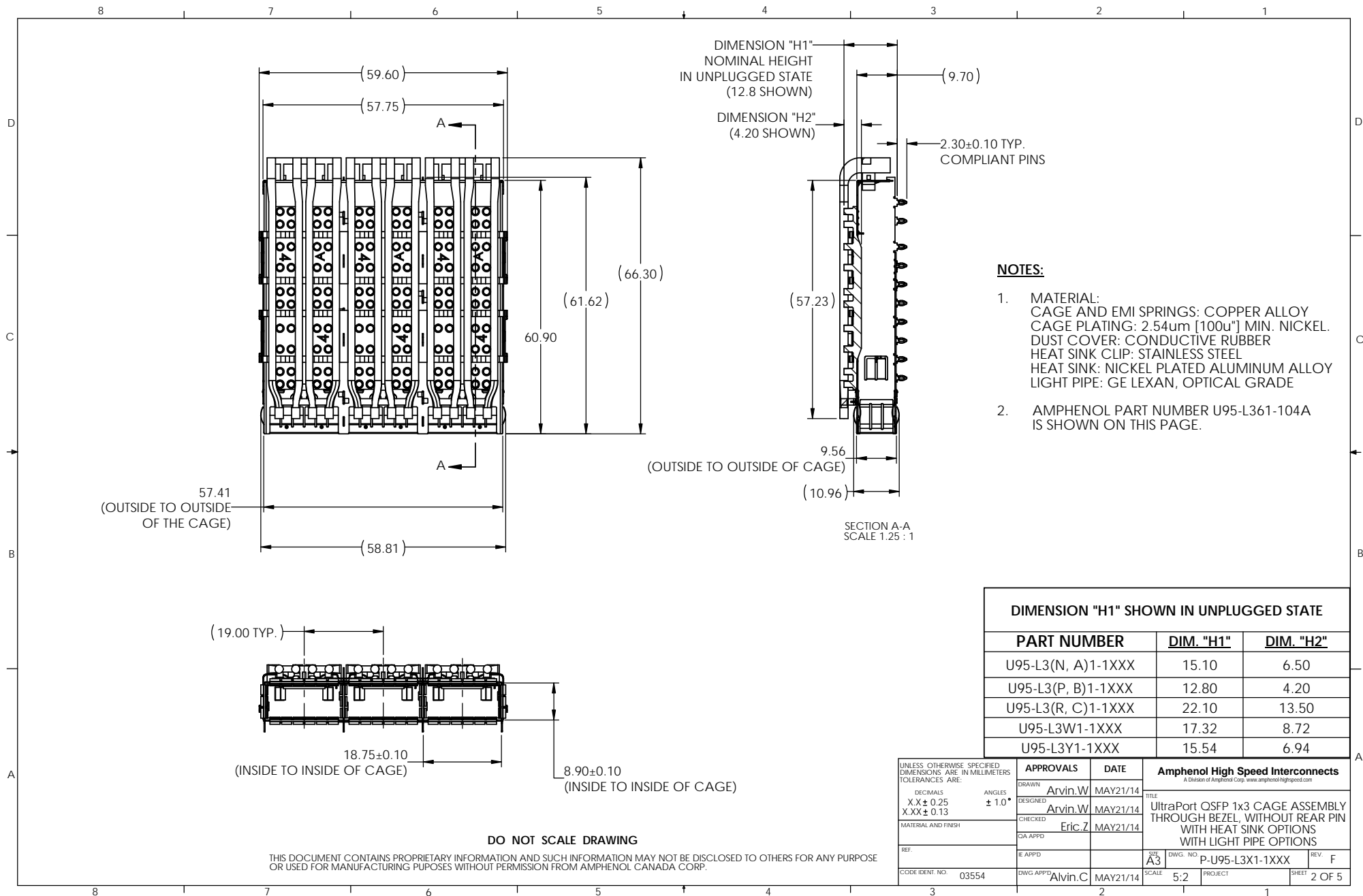
LIGHT PIPE AND BEHIND BEZEL COVER OPTIONS

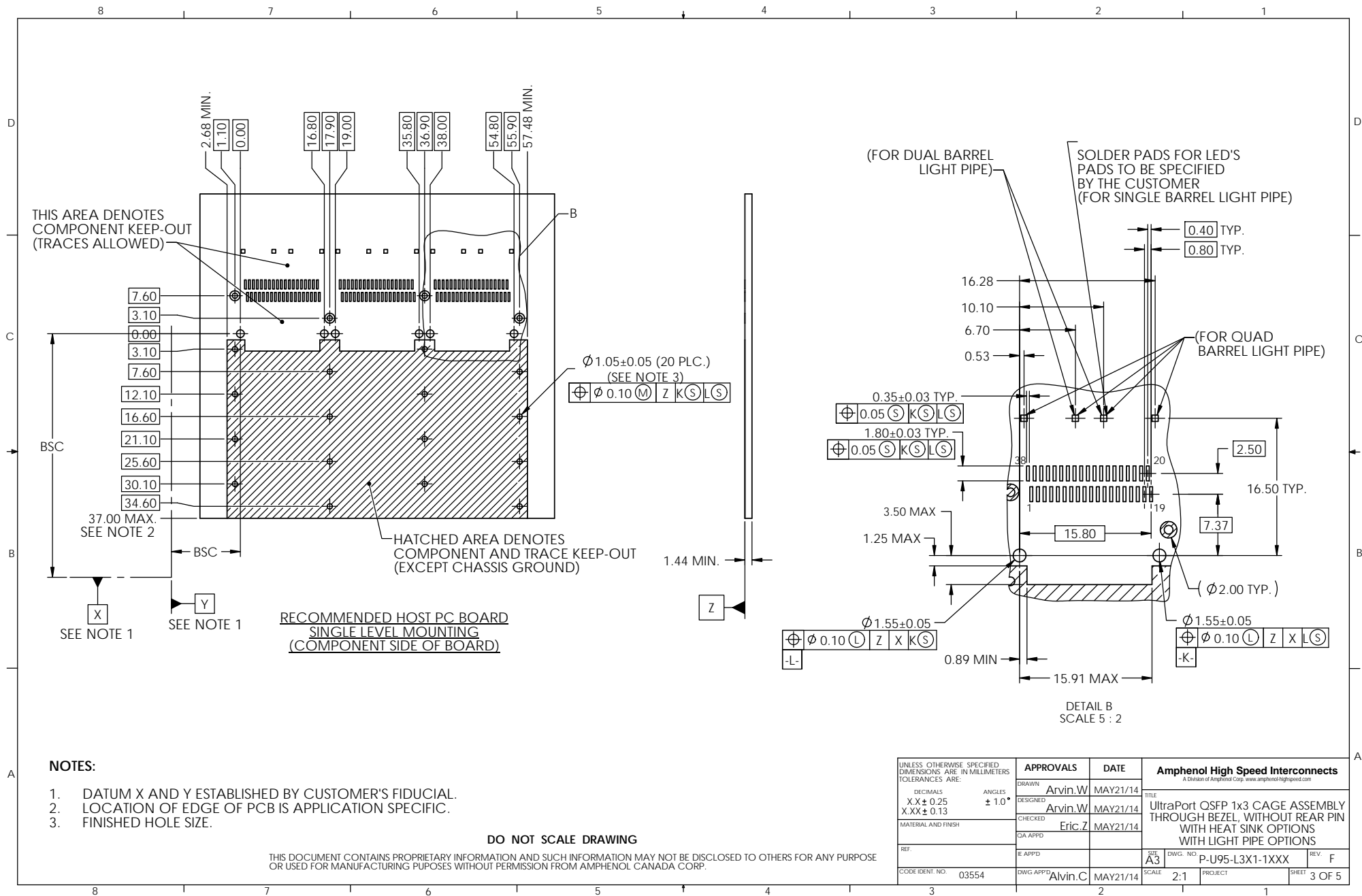
- 0 = WITHOUT LIGHT PIPE  
1 = WITH DUAL ROUND LIGHT PIPE  
4 = WITH QUAD ROUND LIGHT PIPE  
7 = WITH SINGLE ROUND LIGHT PIPE

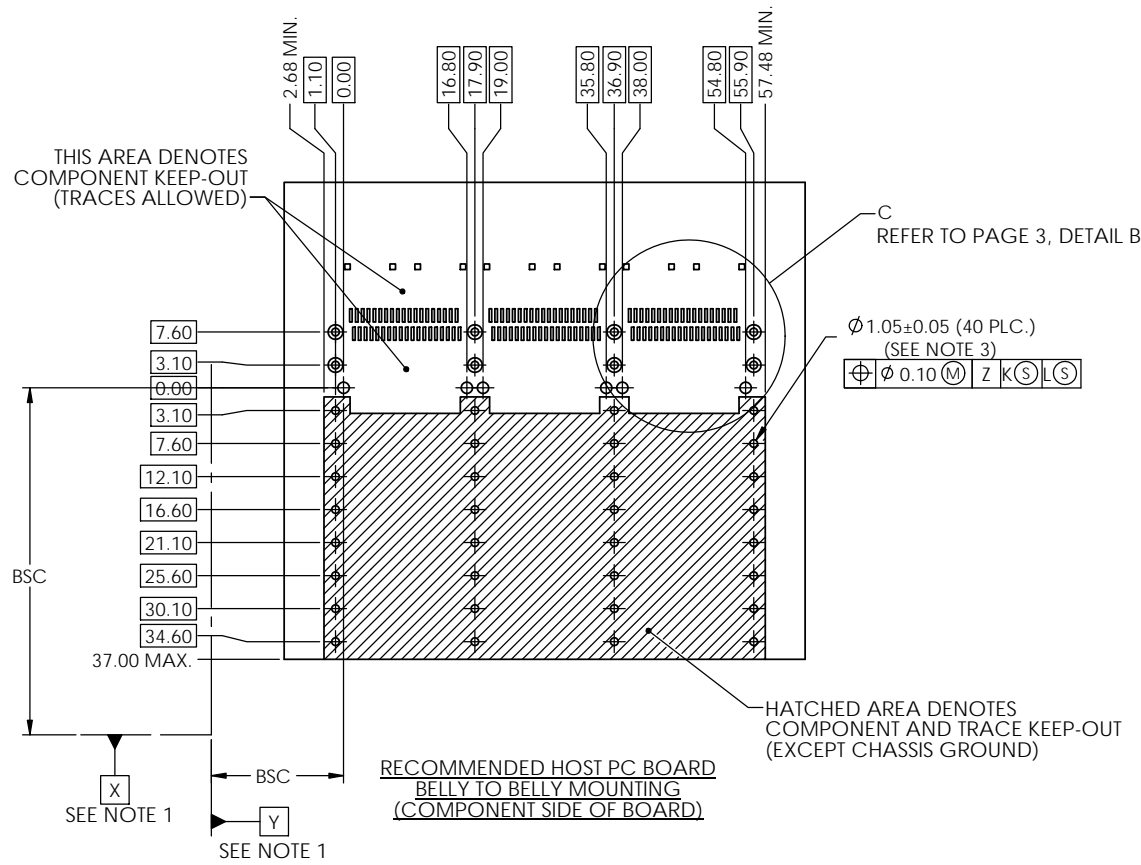
OPTIONAL DUST COVER (CONDUCTIVE)

- 0 = WITHOUT DUST COVER  
D = WITH DUST COVER (SHIPPED AS LOOSE PIECE)

UNLESS OTHERWISE SPECIFIED DIMENSIONS ARE IN MILLIMETERS TOLERANCES ARE: DECIMALS X.X ± 0.25 X.XX ± 0.13 ANGLES ± 1.0° MATERIAL AND FINISH REF. CODE IDENT. NO. 03554				APPROVALS DRAWN Arvin.W DESIGNED Arvin.W CHECKED Eric.Z C/A APPD. E APPD. DWG APPD. Alvin.C	DATE MAY21/14 MAY21/14 MAY21/14   MAY21/14	Amphenol High Speed Interconnects A Division of Amphenol Corp. www.amphenolhighspeed.com TITLE UltraPort QSFP 1x3 CAGE ASSEMBLY THROUGH BEZEL, WITHOUT REAR PIN WITH HEAT SINK OPTIONS WITH LIGHT PIPE OPTIONS SIZE A3 SCALE 1.6:1 PROJECT SHEET 1 OF 5		REV. F
---	--	--	--	---	--	---	--	--------







NOTES:

1. DATUM X AND Y ESTABLISHED BY CUSTOMER'S FIDUCIAL.
2. LOCATION OF EDGE OF PCB IS APPLICATION SPECIFIC.
3. FINISHED HOLE SIZE.

DO NOT SCALE DRAWING

THIS DOCUMENT CONTAINS PROPRIETARY INFORMATION AND SUCH INFORMATION MAY NOT BE DISCLOSED TO OTHERS FOR ANY PURPOSE OR USED FOR MANUFACTURING PURPOSES WITHOUT PERMISSION FROM AMPHENOL CANADA CORP.

UNLESS OTHERWISE SPECIFIED DIMENSIONS ARE IN MILLIMETERS TOLERANCES ARE:		APPROVALS		DATE	Amphenol High Speed Interconnects <small>A Division of Amphenol Corp. www.amphenolhighspeed.com</small>	
DECIMALS X.X ± 0.25 X.XX ± 0.13	ANGLES ± 1.0°	DRAWN	Arvin.W	MAY21/14	TITLE UltraPort QSFP 1x3 CAGE ASSEMBLY THROUGH BEZEL, WITHOUT REAR PIN WITH HEAT SINK OPTIONS WITH LIGHT PIPE OPTIONS	REV F
		DESIGNED	Arvin.W	MAY21/14		
		CHECKED	Eric.Z	MAY21/14		
		QA APPD				
REF.		ENG APPD			SIZE A3	DWG. NO. P-U95-L3X1-1XXX
CODE IDENT. NO.	03554	DWG APPD	Alvin.C	MAY21/14	SCALE 5:2	PROJECT
					SHEET	4 OF 5

