

AMPHENOL PART NUMBER CONFIGURATION
U95 - T2X1 - 1XXX

HEAT SINK OPTION

- 0** = NO HEAT SINK OR CLIP, CLOSED TOP WITH VENT HOLES
1 = NO HEAT SINK OR CLIP SHIPPED
5 = ROUND PIN STYLE (H=6.5mm; SAN HEIGHT)--(NOT AVAILABLE WITH QUAD LIGHT PIPE)
6 = ROUND PIN STYLE (H=4.2mm; PCI HEIGHT)--(NOT AVAILABLE WITH QUAD LIGHT PIPE)
7 = ROUND PIN STYLE (H=13.5mm; TALL)--(NOT AVAILABLE WITH QUAD LIGHT PIPE)
A = SQUARE PIN STYLE (H=6.5mm; SAN HEIGHT)
B = SQUARE PIN STYLE (H=4.2mm; PCI HEIGHT)
C = SQUARE PIN STYLE (H=13.5mm; TALL)
N = PIN-FIN STYLE FOR SIDE TO SIDE AIR FLOW (H=6.5mm; SAN HEIGHT)
P = PIN-FIN STYLE FOR SIDE TO SIDE AIR FLOW (H=4.2mm; PCI HEIGHT)
R = PIN-FIN STYLE FOR SIDE TO SIDE AIR FLOW (H=13.5mm; TALL)
Y = EXTRUDED FIN STYLE FOR FRONT - BACK AIR FLOW (H=6.94mm)
W = EXTRUDED FIN STYLE FOR FRONT - BACK AIR FLOW (H=8.72mm)

NOTE: FOR DIMENSION "H" SEE SHEET 2

PACKAGING OPTIONS

- 1** = TRAY PACKAGING, (FOR HEAT SINK OPTION 1 "OPEN TOP" ONLY)
A = TRAY PACKAGING, (HEAT SINK & CLIP SHIPPED ASSEMBLED, IF ORDERED)

LIGHT PIPE AND BEHIND BEZEL COVER OPTIONS

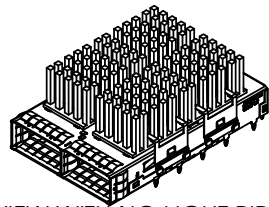
- 0** = WITHOUT LIGHT PIPE
1 = WITH DUAL ROUND LIGHT PIPE
4 = WITH QUAD ROUND LIGHT PIPE
7 = WITH SINGLE ROUND LIGHT PIPE

OPTIONAL DUST COVER (CONDUCTIVE)

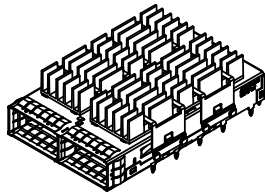
- 0** = WITHOUT DUST COVER
D = WITH DUST COVER (SHIPPED AS LOOSE PIECE)

REVISIONS

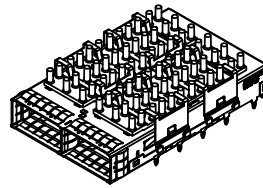
REV	DESCRIPTION	DATE	APPROVED
F	UPDATED DIMENSION	JUL 29/15	J.S
G	UPDATED ERROR	JUN 03/16	J.S
H	UPDATED DIMENSION	DEC 30/16	J.S



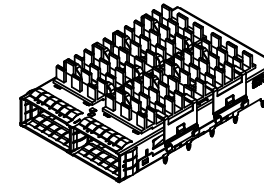
**VIEW WITH NO LIGHT PIPE
AND SQUARE PIN HEAT SINK**
U95-T2C1-100A



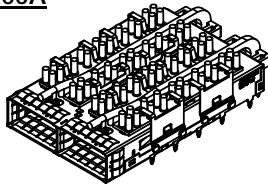
**VIEW WITH NO LIGHT PIPE
AND EXTRUDED HEAT SINK**
U95-T2W1-100A



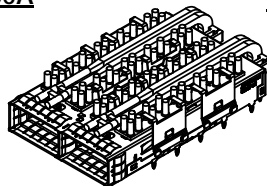
**VIEW WITH NO LIGHT PIPE
AND ROUND PIN HEAT SINK**
U95-T251-100A



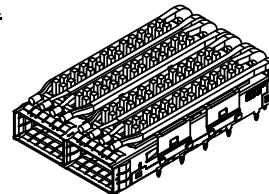
**VIEW WITH NO LIGHT PIPE
AND PIN FIN HEAT SINK**
U95-T2N1-100A



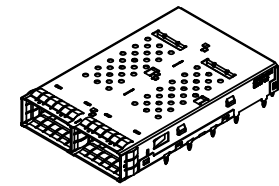
**VIEW WITH SINGLE BARREL LIGHT PIPE
AND ROUND PIN HEAT SINK**
U95-T251-107A



**VIEW WITH DUAL BARREL LIGHT PIPE
AND PIN FIN HEAT SINK**
U95-T251-101A



**VIEW WITH QUAD BARREL LIGHT PIPE
AND SQUARE PIN HEAT SINK**
U95-T2A1-104A



**VIEW WITH CLOSED TOP
AND VENT HOLES**
U95-T201-1001

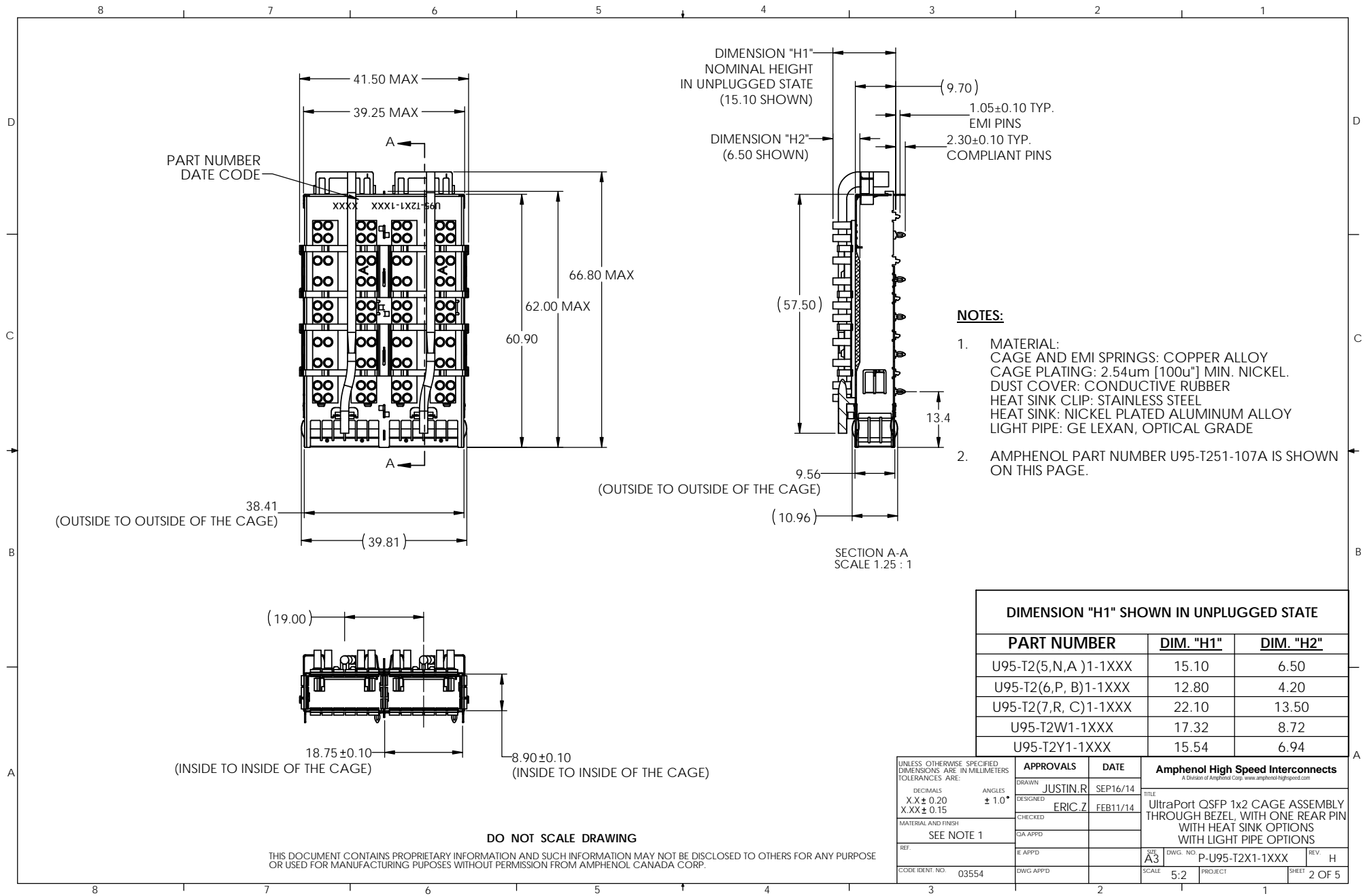


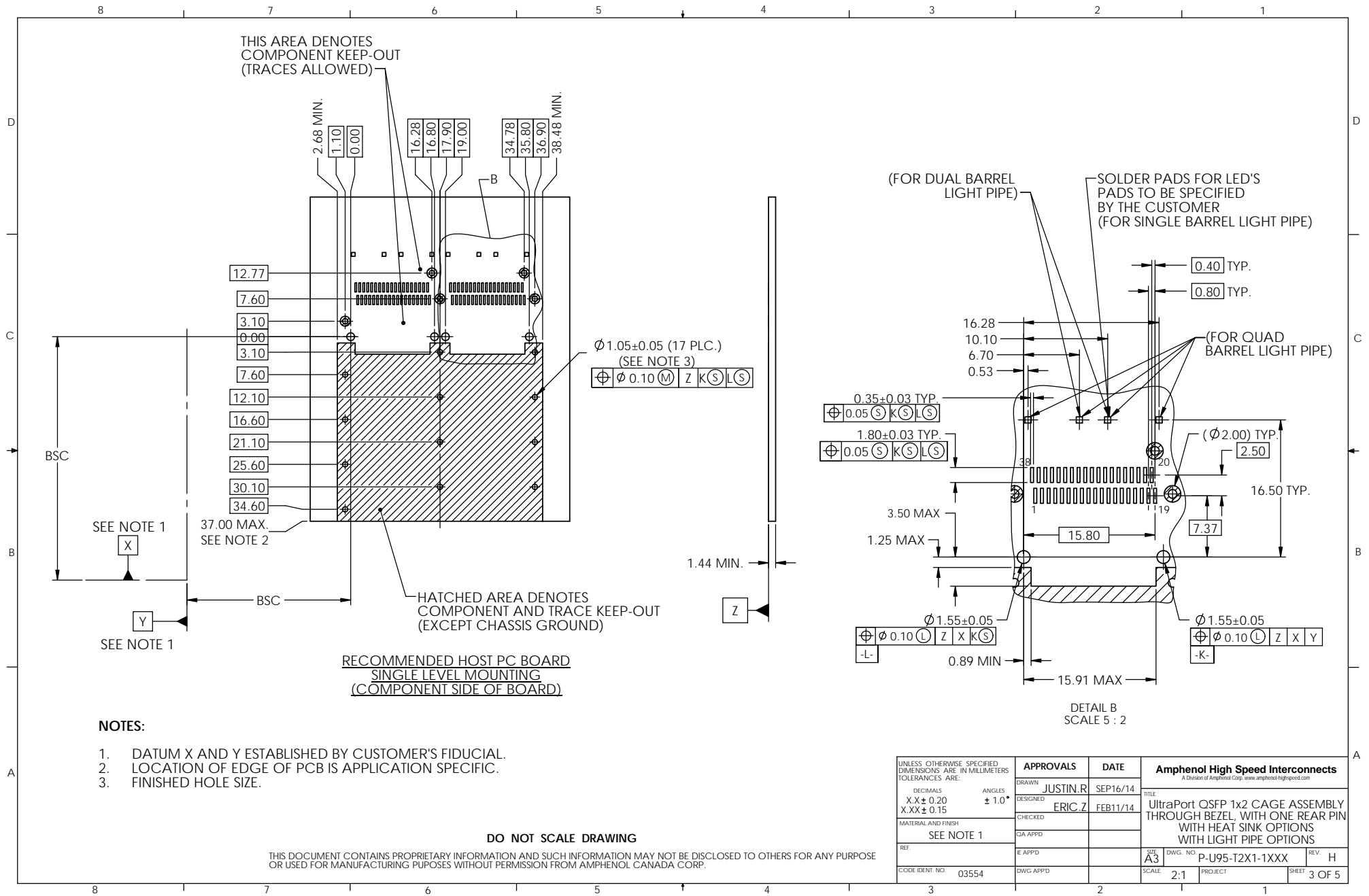
**CONDUCTIVE DUST COVER
SHOWN (OPTIONAL)**
(P/N U90-1401-8000-BP)

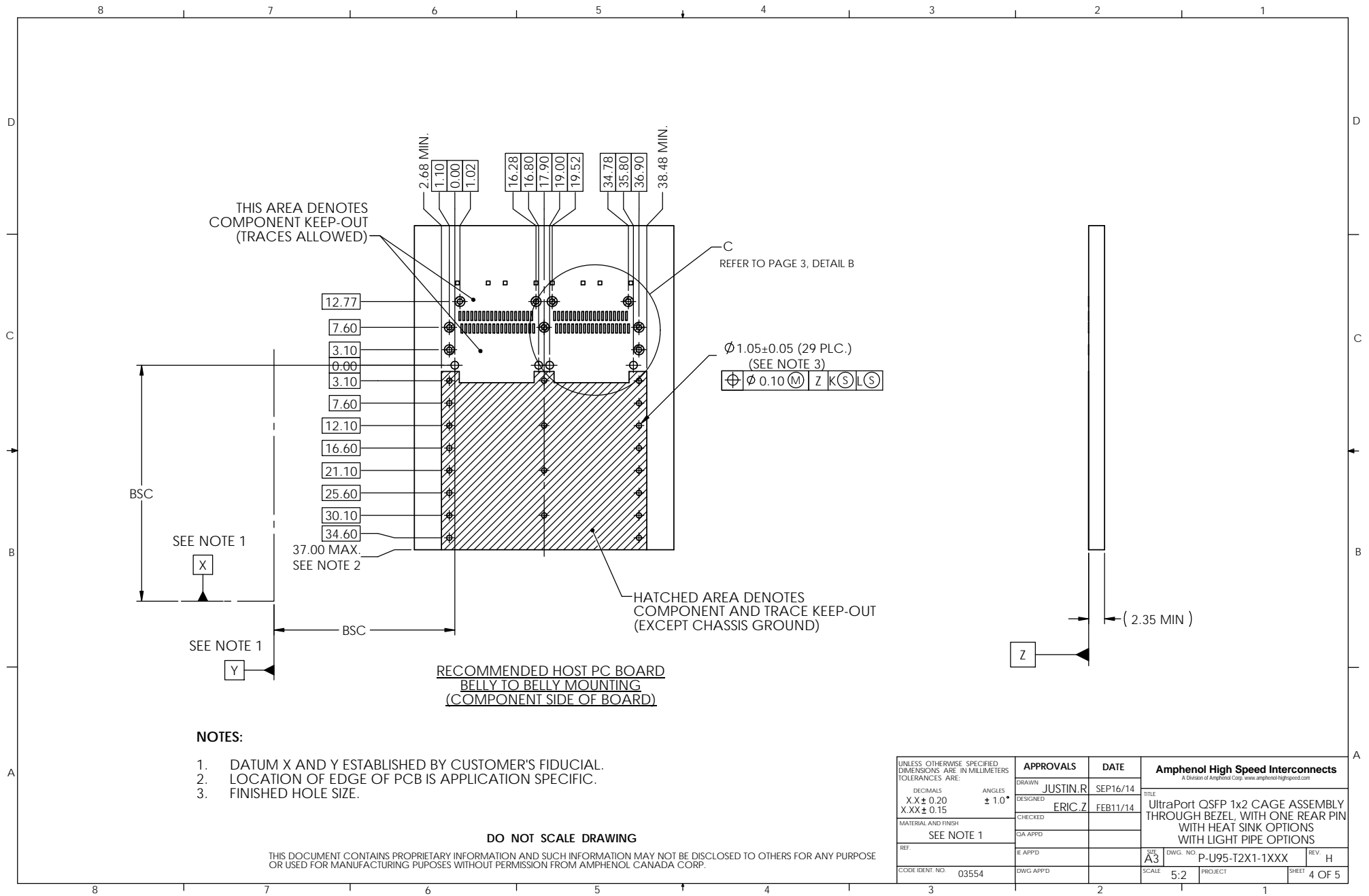
DO NOT SCALE DRAWING

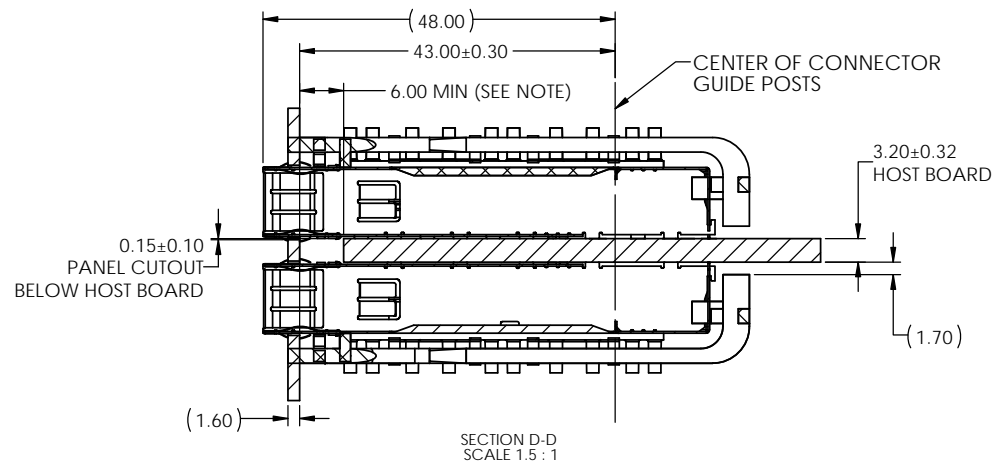
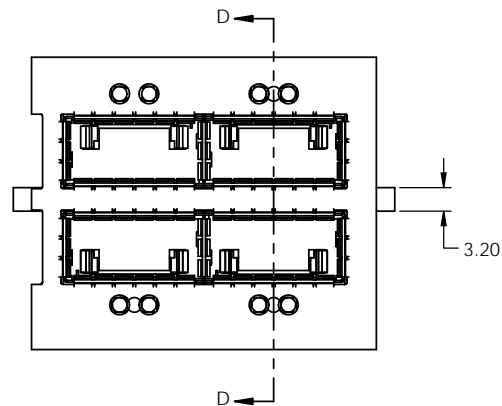
THIS DOCUMENT CONTAINS PROPRIETARY INFORMATION AND SUCH INFORMATION MAY NOT BE DISCLOSED TO OTHERS FOR ANY PURPOSE OR USED FOR MANUFACTURING PURPOSES WITHOUT PERMISSION FROM AMPHENOL CANADA CORP.

UNLESS OTHERWISE SPECIFIED DIMENSIONS ARE IN MILLIMETERS TOLERANCES ARE:		APPROVALS		DATE	Amphenol High Speed Interconnects <small>A Division of Amphenol Corp. www.amphenolhighspeed.com</small>	
DIGITALS XX ± 0.20 X.XX ± 0.15	ANGLES ± 1.0°	DRAWN JUSTIN.R	SEP16/14			
MATERIAL AND FINISH SEE NOTE 1		DESIGNED ERIC.Z	FEB11/14		TITLE UltraPort QSFP 1x2 CAGE ASSEMBLY THROUGH BEZEL, WITH ONE REAR PIN WITH HEAT SINK OPTIONS WITH LIGHT PIPE OPTIONS	
REF.		CHECKED				
E APPD		CA APPD			SIZE A3	
CODE IDENT. NO. 03554		DWG APPD				
					SCALE 0.75:1	PROJECT
						SHEET 1 OF 5

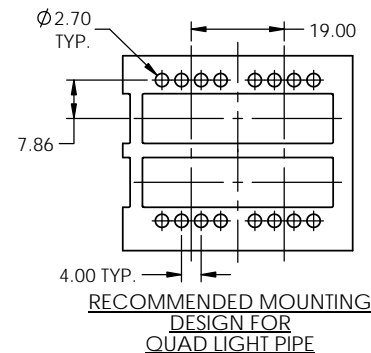
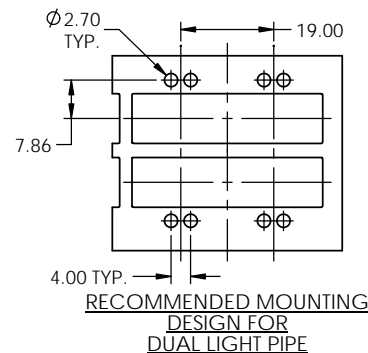
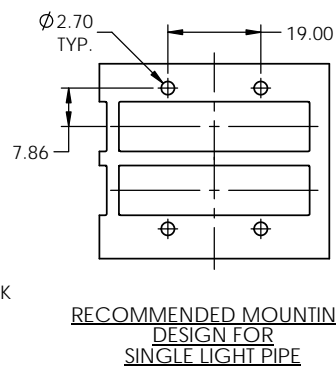
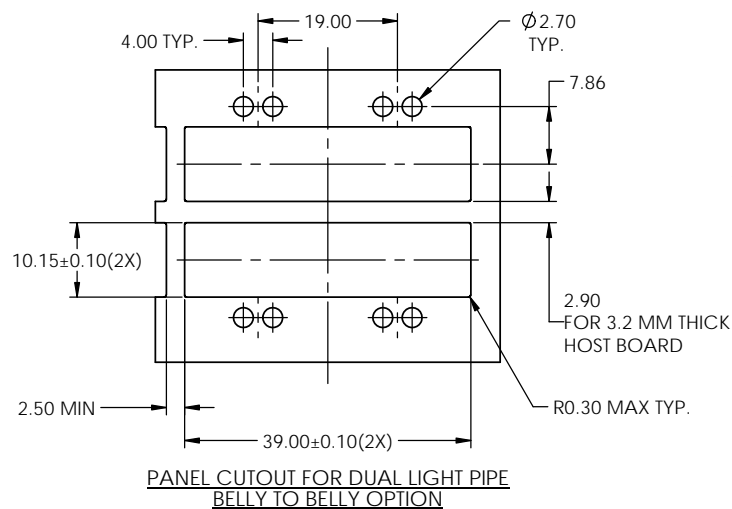








RECOMMENDED BELLY-TO-BELLY MOUNTING DESIGN



NOTES:

LOCATION OF EDGE OF PCB IS APPLICATION SPECIFIC.

DO NOT SCALE DRAWING

THIS DOCUMENT CONTAINS PROPRIETARY INFORMATION AND SUCH INFORMATION MAY NOT BE DISCLOSED TO OTHERS FOR ANY PURPOSE OR USED FOR MANUFACTURING PURPOSES WITHOUT PERMISSION FROM AMPHENOL CANADA CORP.

UNLESS OTHERWISE SPECIFIED DIMENSIONS ARE IN MILLIMETERS TOLERANCES ARE:		APPROVALS		DATE		Amphenol High Speed Interconnects <small>A Division of Amphenol Corp. www.amphenol-highspeed.com</small>			
DECIMALS		DRAWN		JUSTIN.R		SEP16/14		TITLE	
X.X ± 0.20		DESIGNED		ERIC.Z		FEB11/14		UltraPort QSFP 1x2 CAGE ASSEMBLY	
X.XX ± 0.15		CHECKED						THROUGH BEZEL WITH ONE REAR PIN	
MATERIAL AND FINISH		C/A APPD						WITH HEAT SINK OPTIONS	
SEE NOTE 1		E APPD						WITH LIGHT PIPE OPTIONS	
REF.						SUB A3		DWG. NO.	REV.
						P-U95-T2X1-1XXX		H	
CODE IDENT. NO.		03554		DWG APPD		SCALE		2.5:1	PROJECT
									SHEET
									5 OF 5