

# AMPHENOL PART NUMBER CONFIGURATION

U95 - L2X1 - 1XXX

## HEAT SINK OPTION

- 1 = NO HEAT SINK OR CLIP SHIPPED  
5 = ROUND PIN STYLE (H=6.5mm; SAN HEIGHT)--(NOT AVAILABLE WITH QUAD LIGHT PIPE)  
6 = ROUND PIN STYLE (H=4.2mm; PCI HEIGHT)--(NOT AVAILABLE WITH QUAD LIGHT PIPE)  
7 = ROUND PIN STYLE (H=13.5mm; TALL)--(NOT AVAILABLE WITH QUAD LIGHT PIPE)  
A = SQUARE PIN STYLE (H=6.5mm; SAN HEIGHT)  
B = SQUARE PIN STYLE (H=4.2mm; PCI HEIGHT)  
C = SQUARE PIN STYLE (H=13.5mm; TALL)  
N = PIN-FIN STYLE FOR SIDE TO SIDE AIR FLOW (H=6.5mm; SAN HEIGHT)  
P = PIN-FIN STYLE FOR SIDE TO SIDE AIR FLOW (H=4.2mm; PCI HEIGHT)  
R = PIN-FIN STYLE FOR SIDE TO SIDE AIR FLOW (H=13.5mm; TALL)  
Y = EXTRUDED FIN STYLE FOR FRONT - BACK AIR FLOW (H=6.94mm)  
W = EXTRUDED FIN STYLE FOR FRONT - BACK AIR FLOW (H=8.72mm)

NOTE: FOR DIMENSION "H" SEE SHEET 2

## PACKAGING OPTIONS

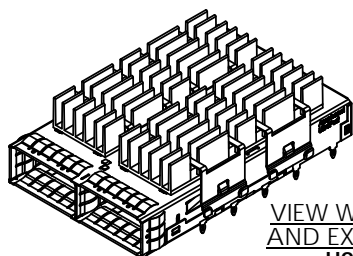
- 1 = TRAY PACKAGING, (FOR HEAT SINK OPTION 1 "OPEN TOP" ONLY)  
A = TRAY PACKAGING, (HEAT SINK & CLIP SHIPPED ASSEMBLED, IF ORDERED)

## LIGHT PIPE AND BEHIND BEZEL COVER OPTIONS

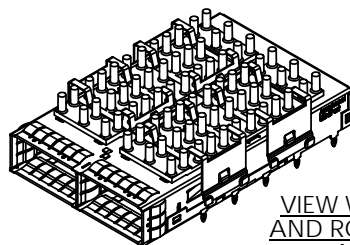
- 0 = WITHOUT LIGHT PIPE  
1 = WITH DUAL ROUND LIGHT PIPE  
4 = WITH QUAD ROUND LIGHT PIPE  
7 = WITH SINGLE ROUND LIGHT PIPE

## OPTIONAL DUST COVER (CONDUCTIVE)

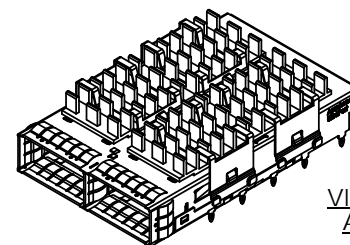
- 0 = WITHOUT DUST COVER  
D = WITH DUST COVER (SHIPPED AS LOOSE PIECE)



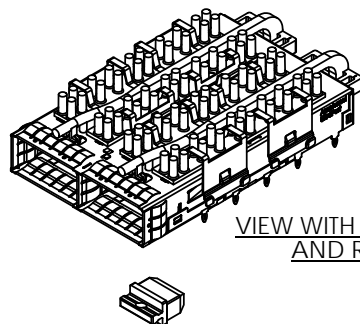
VIEW WITH NO LIGHT PIPE  
AND EXTRUDED HEAT SINK  
U95-L2W1-100A



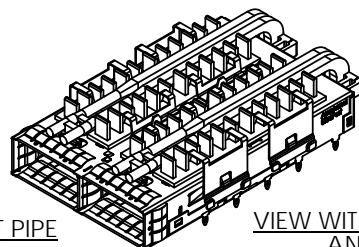
VIEW WITH NO LIGHT PIPE  
AND ROUND PIN HEAT SINK  
U95-L251-100A



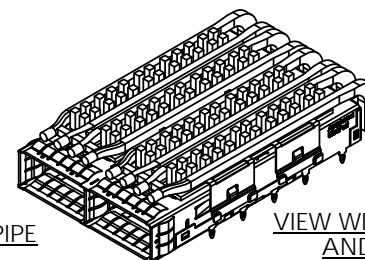
VIEW WITH NO LIGHT PIPE  
AND PIN FIN HEAT SINK  
U95-L2N1-100A



VIEW WITH SINGLE BARREL LIGHT PIPE  
AND ROUND PIN HEAT SINK  
U95-L251-107A



VIEW WITH DUAL BARREL LIGHT PIPE  
AND PIN FIN HEAT SINK  
U95-L2N1-101A



VIEW WITH QUAD BARREL LIGHT PIPE  
AND SQUARE PIN HEAT SINK  
U95-L2A1-104A

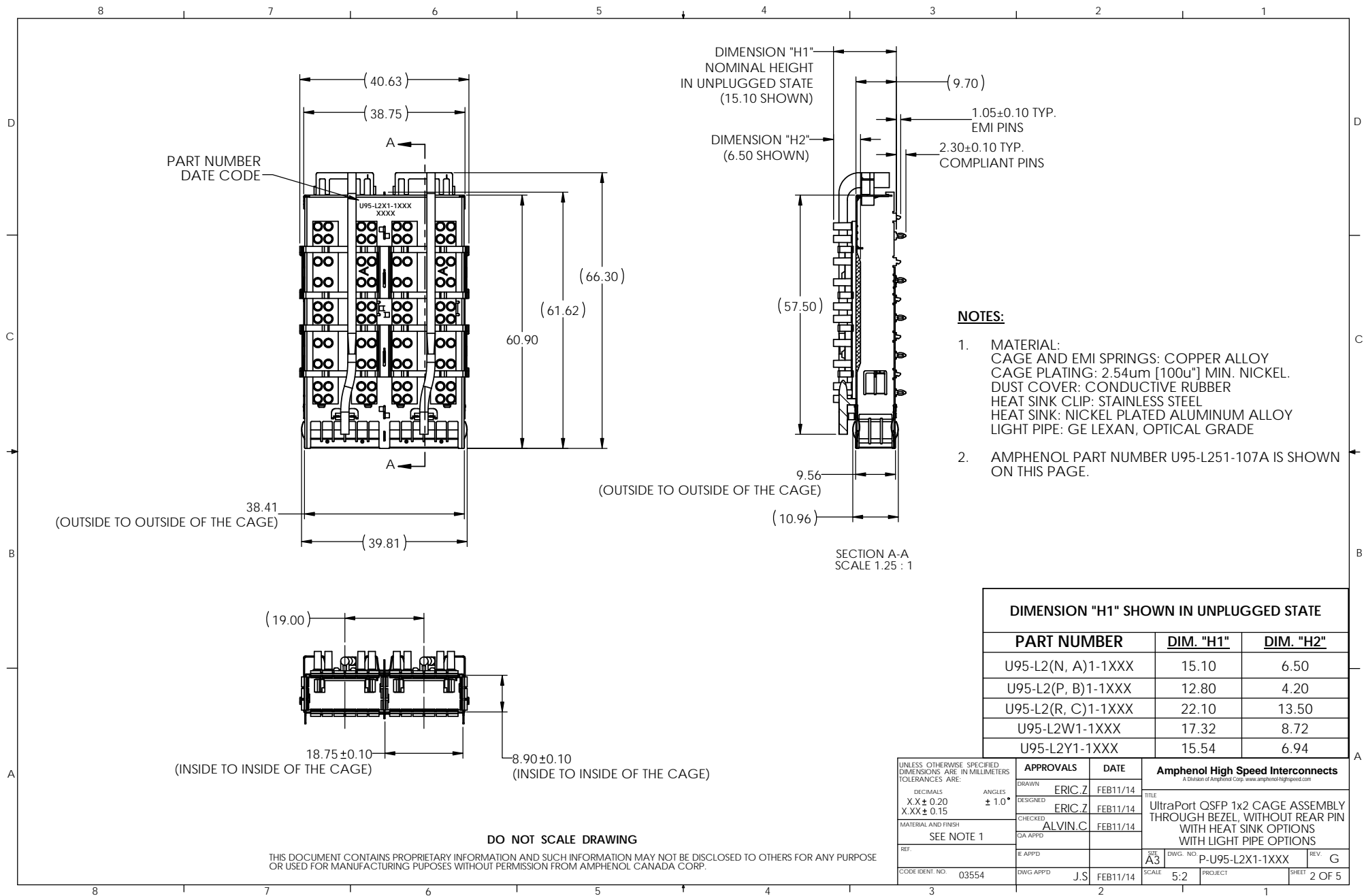
CONDUCTIVE DUST COVER  
SHOWN (OPTIONAL)  
(P/N U90-1401-8000-BP)

DO NOT SCALE DRAWING

THIS DOCUMENT CONTAINS PROPRIETARY INFORMATION AND SUCH INFORMATION MAY NOT BE DISCLOSED TO OTHERS FOR ANY PURPOSE OR USED FOR MANUFACTURING PURPOSES WITHOUT PERMISSION FROM AMPHENOL CANADA CORP.

REVISIONS		
REV	DESCRIPTION	DATE
E	ADDED NEW HEAT SINK OPTIONS	JAN 19/15
F	PCB FRONT EDGE DIM. AND NOTE ADDED	APR 23/15
G	COMPLIANT PIN LEAD IN TIP SHORTENED FOR THINNER B2B PCB APPLICATION	JUL 10/15

UNLESS OTHERWISE SPECIFIED DIMENSIONS ARE IN MILLIMETERS TOLERANCES ARE:		APPROVALS		DATE	Amphenol High Speed Interconnects <small>A Division of Amphenol Corp. www.amphenolhighspeed.com</small>	
DECIMALS XX ± 0.20 X.XX ± 0.15	ANGLES ± 1.0°	DRAWN	ERIC.Z	FEB11/14	TITLE UltraPort OSFP 1x2 CAGE ASSEMBLY THROUGH BEZEL, WITHOUT REAR PIN WITH HEAT SINK OPTIONS WITH LIGHT PIPE OPTIONS	REV G
		DESIGNED	ERIC.Z	FEB11/14		
		CHECKED	ALVIN.C	FEB11/14		
		QA APP'D				
SEE NOTE 1					SIZE A3	DWG. NO. P-U95-L2X1-1XXX
REF.						
CODE IDENT. NO.	03554	E APP'D			SCALE	PROJECT
		DWG APP'D	J.S	FEB11/14	1.6:1	SHEET 1 OF 5



PART NUMBER  
DATE CODE

A

A

(OUTSIDE TO OUTSIDE OF THE CAGE)

38.41  
(OUTSIDE TO OUTSIDE OF THE CAGE)

(19.00)

18.75 ± 0.10  
(INSIDE TO INSIDE OF THE CAGE)

8.90 ± 0.10  
(INSIDE TO INSIDE OF THE CAGE)

DO NOT SCALE DRAWING

THIS DOCUMENT CONTAINS PROPRIETARY INFORMATION AND SUCH INFORMATION MAY NOT BE DISCLOSED TO OTHERS FOR ANY PURPOSE  
OR USED FOR MANUFACTURING PURPOSES WITHOUT PERMISSION FROM AMPHENOL CANADA CORP.

DIMENSION "H1"  
NOMINAL HEIGHT  
IN UNPLUGGED STATE  
(15.10 SHOWN)

DIMENSION "H2"  
(6.50 SHOWN)

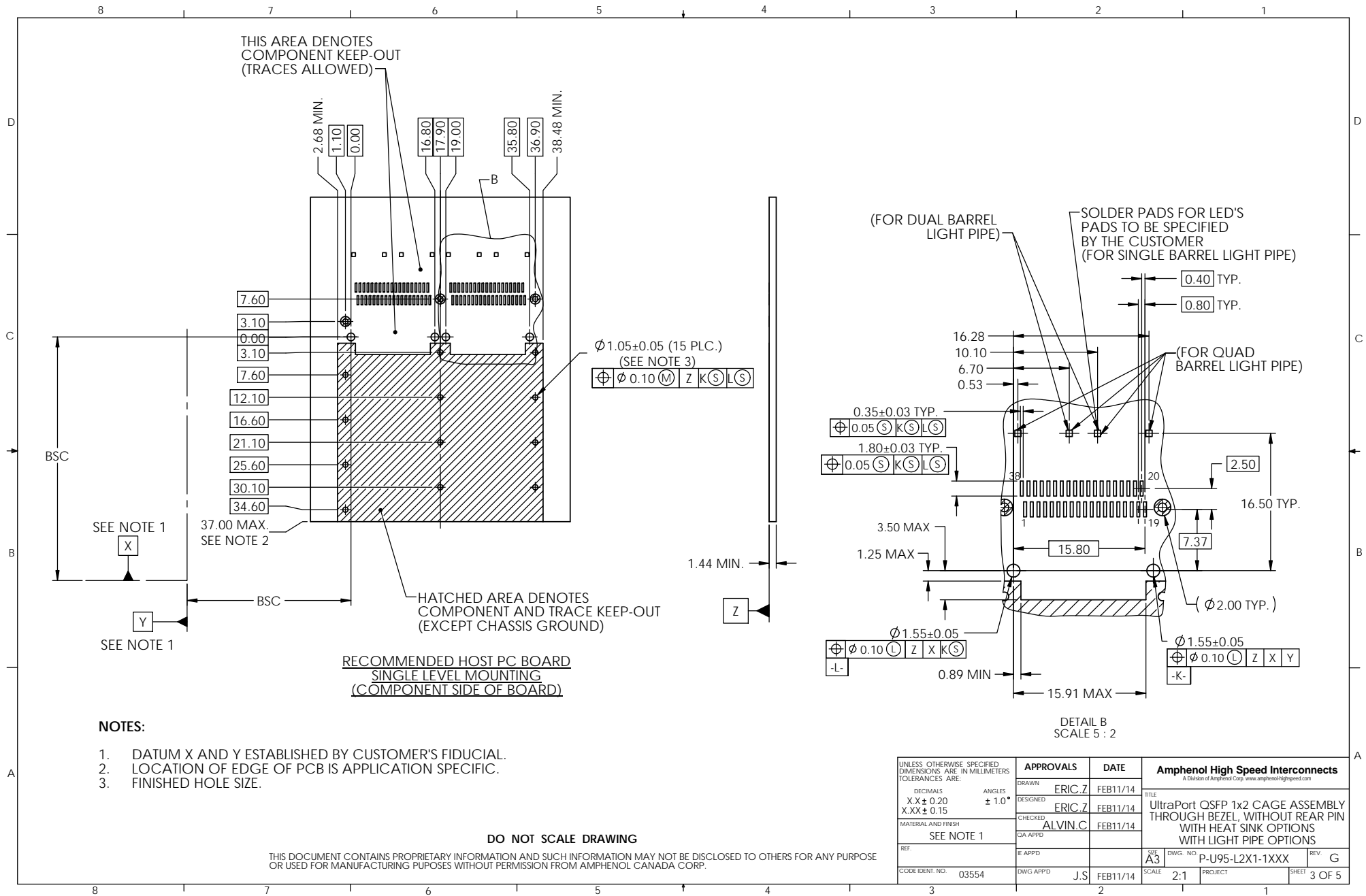
**NOTES:**

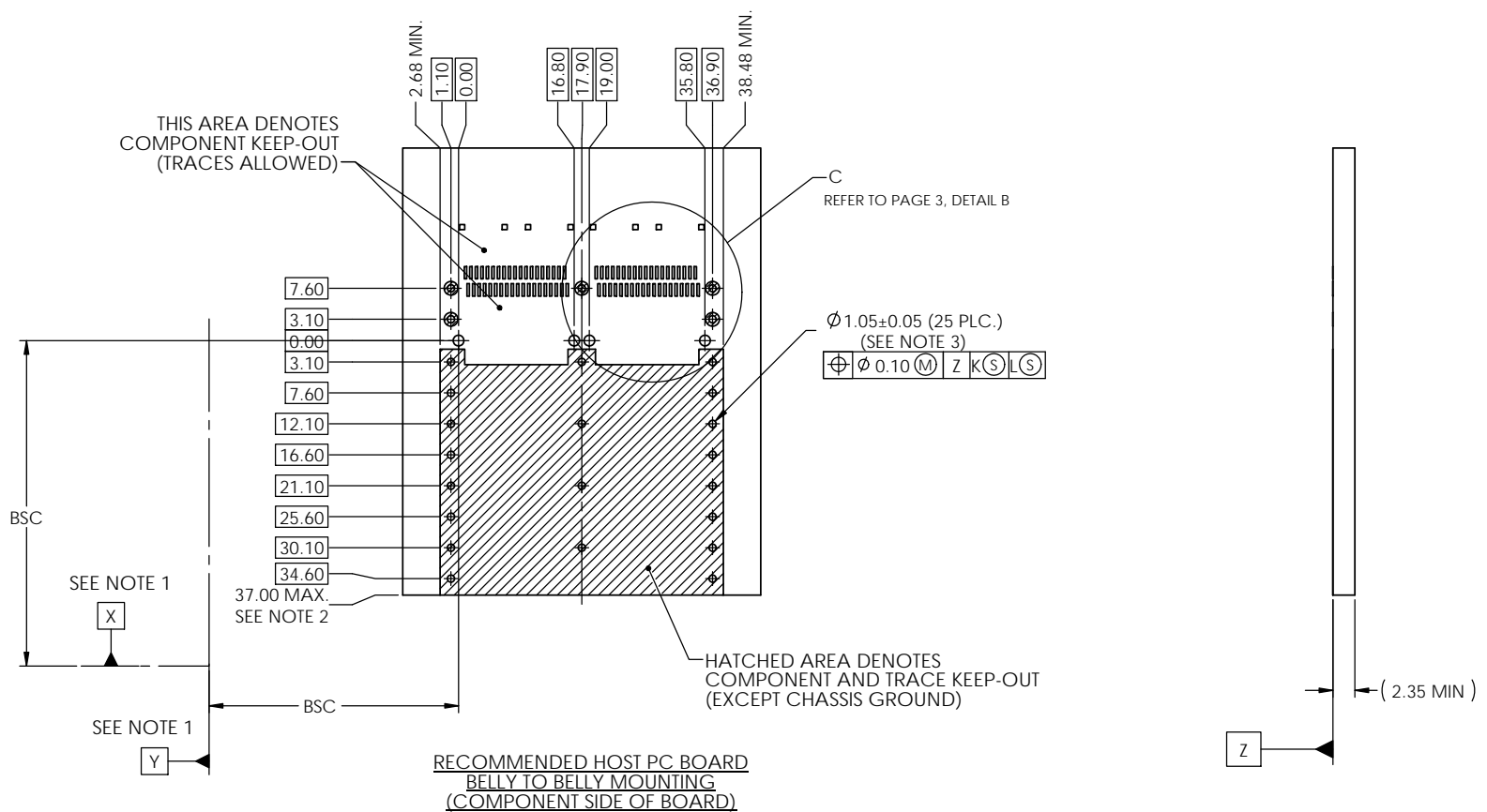
- MATERIAL:  
CAGE AND EMI SPRINGS: COPPER ALLOY  
CAGE PLATING: 2.54um [100u"] MIN. NICKEL.  
DUST COVER: CONDUCTIVE RUBBER  
HEAT SINK CLIP: STAINLESS STEEL  
HEAT SINK: NICKEL PLATED ALUMINUM ALLOY  
LIGHT PIPE: GE LEXAN, OPTICAL GRADE
- AMPHENOL PART NUMBER U95-L251-107A IS SHOWN  
ON THIS PAGE.

**DIMENSION "H1" SHOWN IN UNPLUGGED STATE**

PART NUMBER	DIM. "H1"	DIM. "H2"
U95-L2(N, A)1-1XXX	15.10	6.50
U95-L2(P, B)1-1XXX	12.80	4.20
U95-L2(R, C)1-1XXX	22.10	13.50
U95-L2W1-1XXX	17.32	8.72
U95-L2Y1-1XXX	15.54	6.94

UNLESS OTHERWISE SPECIFIED DIMENSIONS ARE IN MILLIMETERS TOLERANCES ARE:		APPROVALS		DATE	Amphenol High Speed Interconnects A Division of Amphenol Corp. www.amphenolhighspeed.com		
DECIMALS X.X ± 0.20 X.XX ± 0.15		DRAWN ERIC.Z		FEB11/14	TITLE UltraPort OSFP 1x2 CAGE ASSEMBLY THROUGH BEZEL, WITHOUT REAR PIN WITH HEAT SINK OPTIONS WITH LIGHT PIPE OPTIONS		
ANGLES ± 1.0°		DESIGNED ERIC.Z		FEB11/14			
MATERIAL AND FINISH SEE NOTE 1		CHECKED ALVIN.C		FEB11/14			
REF.		E APPD.					
CODE IDENT. NO. 03554		DWG APPD. J.S.		FEB11/14	SIZE A3	DWG. NO. P-U95-L2X1-1XXX	REV. G
					SCALE 5:2	PROJECT	SHEET 2 OF 5





NOTES:

1. DATUM X AND Y ESTABLISHED BY CUSTOMER'S FIDUCIAL.
2. LOCATION OF EDGE OF PCB IS APPLICATION SPECIFIC.
3. FINISHED HOLE SIZE.

DO NOT SCALE DRAWING

THIS DOCUMENT CONTAINS PROPRIETARY INFORMATION AND SUCH INFORMATION MAY NOT BE DISCLOSED TO OTHERS FOR ANY PURPOSE OR USED FOR MANUFACTURING PURPOSES WITHOUT PERMISSION FROM AMPHENOL CANADA CORP.

UNLESS OTHERWISE SPECIFIED DIMENSIONS ARE IN MILLIMETERS TOLERANCES ARE:  DECIMALS X.X ± 0.20 X.XX ± 0.15  ANGLES ± 1.0°  MATERIAL AND FINISH SEE NOTE 1  REF.  CODE IDENT. NO. 03554		APPROVALS		DATE		Amphenol High Speed Interconnects <small>A Division of Amphenol Corp. www.amphenolhighspeed.com</small>					
		DRAWN ERIC.Z		FEB11/14		TITLE UltraPort OSFP 1x2 CAGE ASSEMBLY THROUGH BEZEL, WITHOUT REAR PIN WITH HEAT SINK OPTIONS WITH LIGHT PIPE OPTIONS					
		DESIGNED ERIC.Z		FEB11/14							
		CHECKED ALVIN.C		FEB11/14							
		G/A APPD				SIZE A3		DWG. NO. P-U95-L2X1-1XXX		REV. G	
		E APPD				SCALE 5:2		PROJECT		SHEET 4 OF 5	

8 7 6 5 4 3 2 1

D

C

B

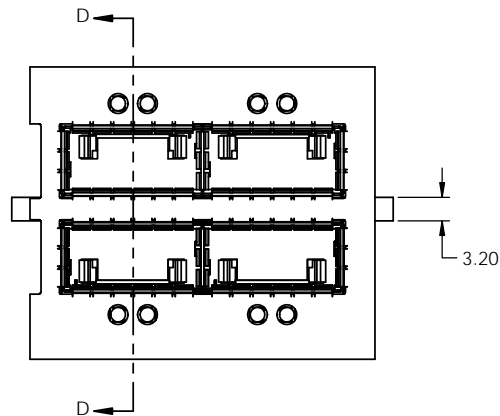
A

D

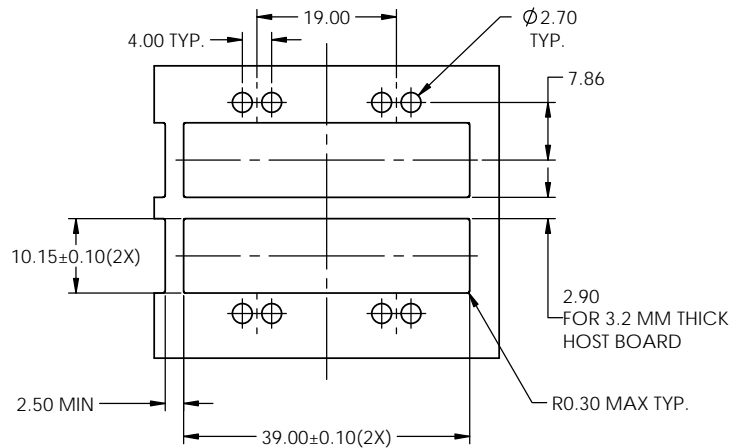
C

B

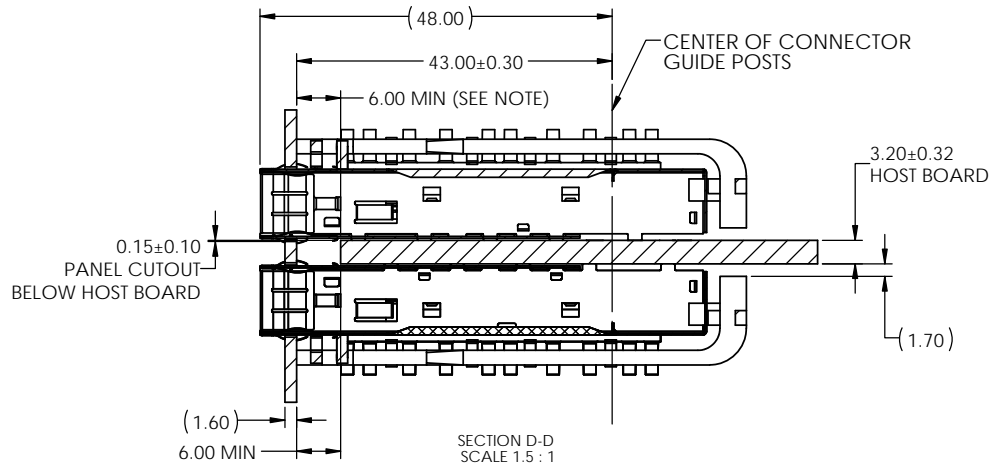
A



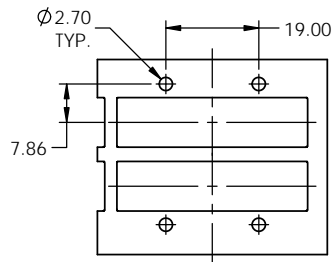
RECOMMENDED BELLY-TO-BELLY MOUNTING DESIGN



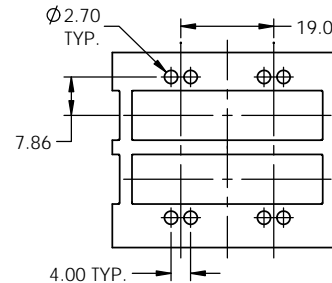
PANEL CUTOUT FOR DUAL LIGHT PIPE  
BELLY TO BELLY OPTION



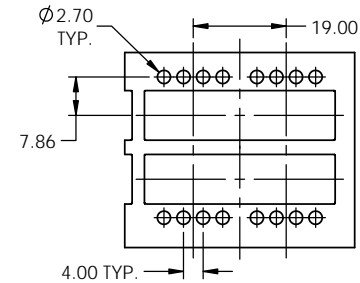
SECTION D-D  
SCALE 1.5 : 1



RECOMMENDED MOUNTING  
DESIGN FOR  
SINGLE LIGHT PIPE



RECOMMENDED MOUNTING  
DESIGN FOR  
DUAL LIGHT PIPE



RECOMMENDED MOUNTING  
DESIGN FOR  
QUAD LIGHT PIPE

NOTES:

LOCATION OF EDGE OF PCB IS APPLICATION SPECIFIC.

DO NOT SCALE DRAWING

THIS DOCUMENT CONTAINS PROPRIETARY INFORMATION AND SUCH INFORMATION MAY NOT BE DISCLOSED TO OTHERS FOR ANY PURPOSE  
OR USED FOR MANUFACTURING PURPOSES WITHOUT PERMISSION FROM AMPHENOL CANADA CORP.

UNLESS OTHERWISE SPECIFIED DIMENSIONS ARE IN MILLIMETERS TOLERANCES ARE: DECIMALS ANGLES X.X ± 0.20 ± 1.0° X.XX ± 0.15		APPROVALS		DATE	Amphenol High Speed Interconnects <small>A Division of Amphenol Corp. www.amphenol-hsiproduct.com</small>	
DRAWN		ERIC.Z		FEB11/14	TITLE UltraPort QSFP 1x2 CAGE ASSEMBLY THROUGH BEZEL, WITHOUT REAR PIN WITH HEAT SINK OPTIONS WITH LIGHT PIPE OPTIONS	
DESIGNED		ERIC.Z		FEB11/14		
CHECKED		ALVIN.C		FEB11/14		
MATERIAL AND FINISH		SEE NOTE 1				
REF.		E APPD			SIZE A3	
CODE IDENT. NO.		DWG APPD		J.S	SCALE 2.5:1	PROJECT P-U95-L2X1-1XXX
03554		FEB11/14			SCALE	REV. G
					PROJECT	SHEET 5 OF 5

8 7 6 5 4 3 2 1