

REVISIONS				
REV.	ECN	DESCRIPTION	DATE	APPROVED
A		PROPOSAL	27-APR-22	J.SI

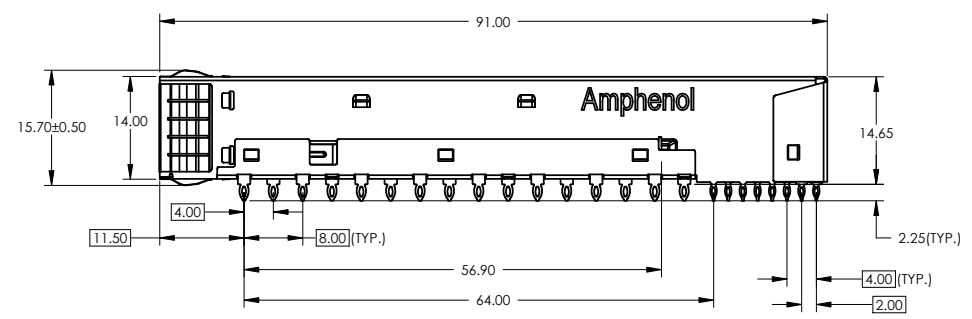
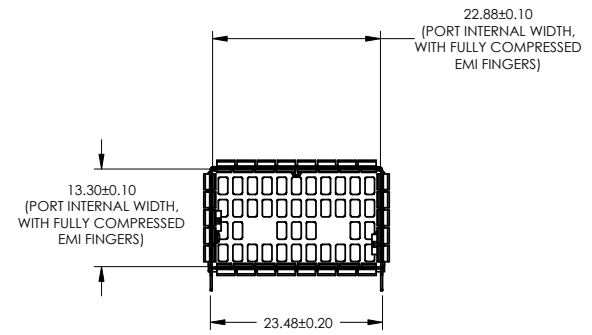
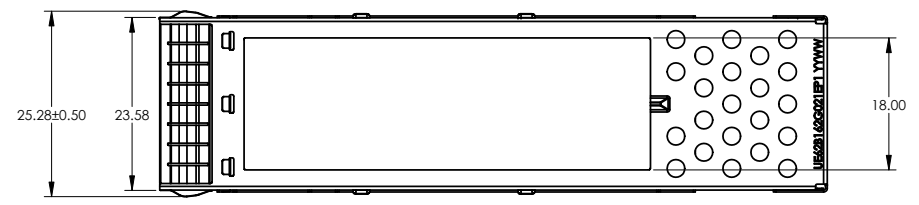
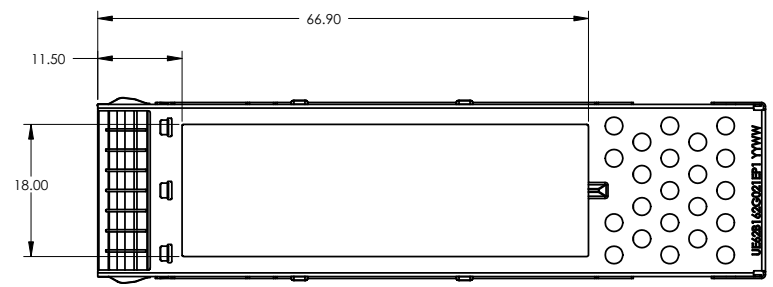
- NOTES:
- 1) MATERIAL: COPPER ALLOY.
  - 2) PLATING: 2.54 μm MIN. NICKEL.
  - 3) PACKAGING: TRAY PACKAGING.
  - 4) COMPLIES WITH OSFP MSA .
  - 5) AMPHENOL PART NUMBER: UE62-B162G-021EP1



**DO NOT SCALE DRAWING**  
 THIS DOCUMENT CONTAINS PROPRIETARY INFORMATION AND SUCH INFORMATION MAY NOT BE DISCLOSED TO OTHERS FOR ANY PURPOSE OR USED FOR MANUFACTURING PUPOSES WITHOUT PERMISSION FROM AMPHENOL CANADA CORP.

UNLESS OTHERWISE SPECIFIED DIMENSIONS ARE IN MILLIMETERS TOLERANCES ARE:		<b>APPROVALS</b>	<b>DATE</b>	<b>Amphenol High Speed Interconnects</b> A Division of Amphenol Corp. www.amphenol-highspeed.com	
DECIMALS	ANGLES	DRAWN	Galen	27-APR-22	TITLE
X.X ± 0.38	± 0.5°	DESIGNED			OSFP 1X1 CAGE WITH TOP OPEN
X.XX ± 0.25		CHECKED	Chigow.X	27-APR-22	
MATERIAL AND FINISH		QA APPD			
SEE NOTE 1		REF.			SIZE DWG. NO.
		E APPD			A3 P-UE62-B162G-021EP1
CODE IDENT. NO.	03554	DWG APPD	J.SI	27-APR-22	SCALE PROJECT SHEET
					1:1 1 1 OF 6

REVISIONS				
REV.	ECN	DESCRIPTION	DATE	APPROVED
A		PROPOSAL	27-APR-22	J.SI



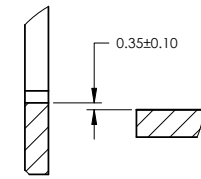
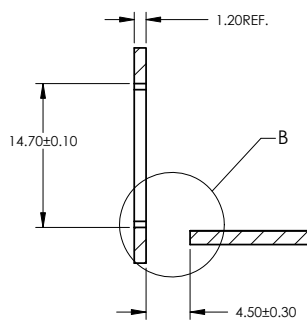
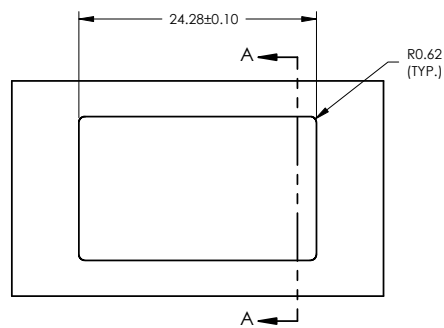
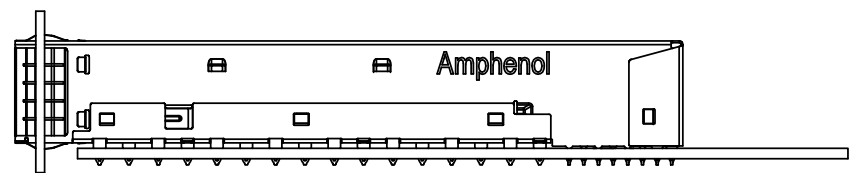
**DO NOT SCALE DRAWING**

THIS DOCUMENT CONTAINS PROPRIETARY INFORMATION AND SUCH INFORMATION MAY NOT BE DISCLOSED TO OTHERS FOR ANY PURPOSE OR USED FOR MANUFACTURING PURPOSES WITHOUT PERMISSION FROM AMPHENOL CANADA CORP.

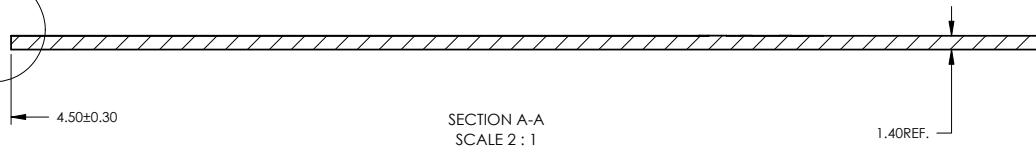
UNLESS OTHERWISE SPECIFIED DIMENSIONS ARE IN MILLIMETERS TOLERANCES ARE: DECIMALS      ANGLES X.X ± 0.38      ± 0.5° X.XX ± 0.25		<b>APPROVALS</b>	<b>DATE</b>	<b>Amphenol High Speed Interconnects</b> <small>A Division of Amphenol Corp. www.amphenol-highspeed.com</small>	
MATERIAL AND FINISH <b>SEE NOTE 1</b>		DRAWN Galen	27-APR-22	TITLE	
REF.		DESIGNED		OSFP 1X1 CAGE WITH TOP OPEN	
CODE IDENT. NO. 03554		CHECKED Chigow.X	27-APR-22	SIZE A3	DWG. NO. P-UE62-B162G-021EP1
		QA APPD		SCALE 1:1	PROJECT
		E APPD			REV. A
		DWG APPD J.SI	27-APR-22		SHEET 2 OF 6

**REVISIONS**

REV.	ECN	DESCRIPTION	DATE	APPROVED
A		PROPOSAL	27-APR-22	J.SI

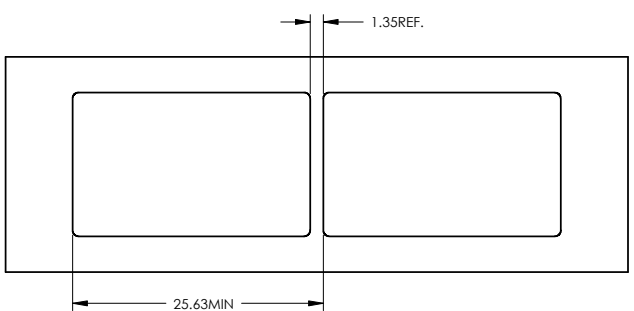


DETAIL B  
SCALE 4 : 1



SECTION A-A  
SCALE 2 : 1

RECOMMENDED BEZE DESIGN  
FOR SINGLE SAID MOUNTING



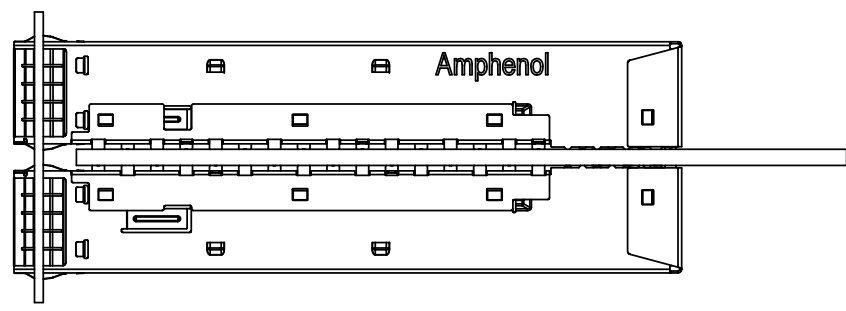
**DO NOT SCALE DRAWING**

THIS DOCUMENT CONTAINS PROPRIETARY INFORMATION AND SUCH INFORMATION MAY NOT BE DISCLOSED TO OTHERS FOR ANY PURPOSE OR USED FOR MANUFACTURING PURPOSES WITHOUT PERMISSION FROM AMPHENOL CANADA CORP.

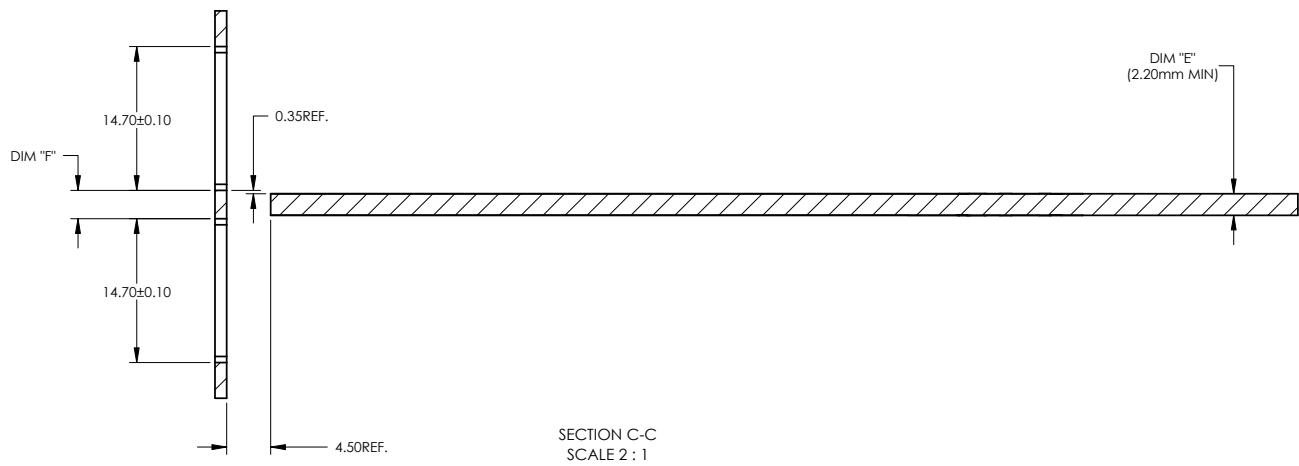
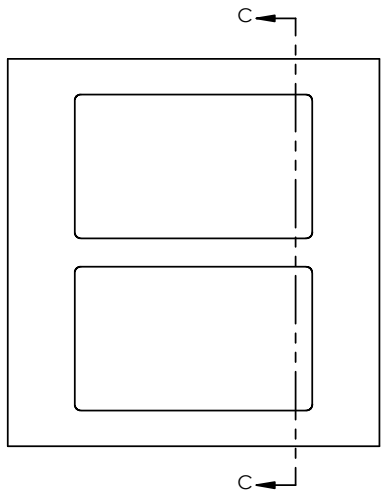
<small>UNLESS OTHERWISE SPECIFIED DIMENSIONS ARE IN MILLIMETERS TOLERANCES ARE:</small> DECIMALS: X.X ± 0.38 X.XX ± 0.25 ANGLES: ± 0.5° MATERIAL AND FINISH: SEE NOTE 1 REF.: CODE IDENT. NO.: 03554	<b>APPROVALS</b>	<b>DATE</b>	<b>Amphenol High Speed Interconnects</b> <small>A Division of Amphenol Corp. www.amphenol-highspeed.com</small>	
	DRAWN: Galen	27-APR-22	TITLE	
	DESIGNED:		OSFP 1X1 CAGE WITH TOP OPEN	
	CHECKED: Chigow.X	27-APR-22	QA APPD:	
E APPD:		SIZE: A3	DWG. NO.: P-UE62-B162G-021EP1	REV. A
DWG APPD: J.SI	27-APR-22	SCALE: 1:1	PROJECT:	SHEET: 3 OF 6

8 7 6 5 4 3 2 1

REVISIONS				
REV.	ECN	DESCRIPTION	DATE	APPROVED
A		PROPOSAL	27-APR-22	J.SI



NOTE:  
 PANEL CUTOUT SIZES PER OSFP MSA SPEC. FOR BELLY TO BELLY MOUNTING, DIM "E" (PCB THICKNESS) IS 2.20 mm MIN. DIM "F" RELATED TO DIM "E". FOR DIM "F" = DIM "E" + 0.70 mm. THE PANEL CUTOUT 14.70 mm MIGHT BE INCREASED UP TO 15.10 mm IN ORDER TO ACCOMODATE PCB TOLERANCE.



RECOMMENDED BEZE DESIGN  
 (BELLY TO BELLY CAGE MOUNTING)

SECTION C-C  
 SCALE 2 : 1

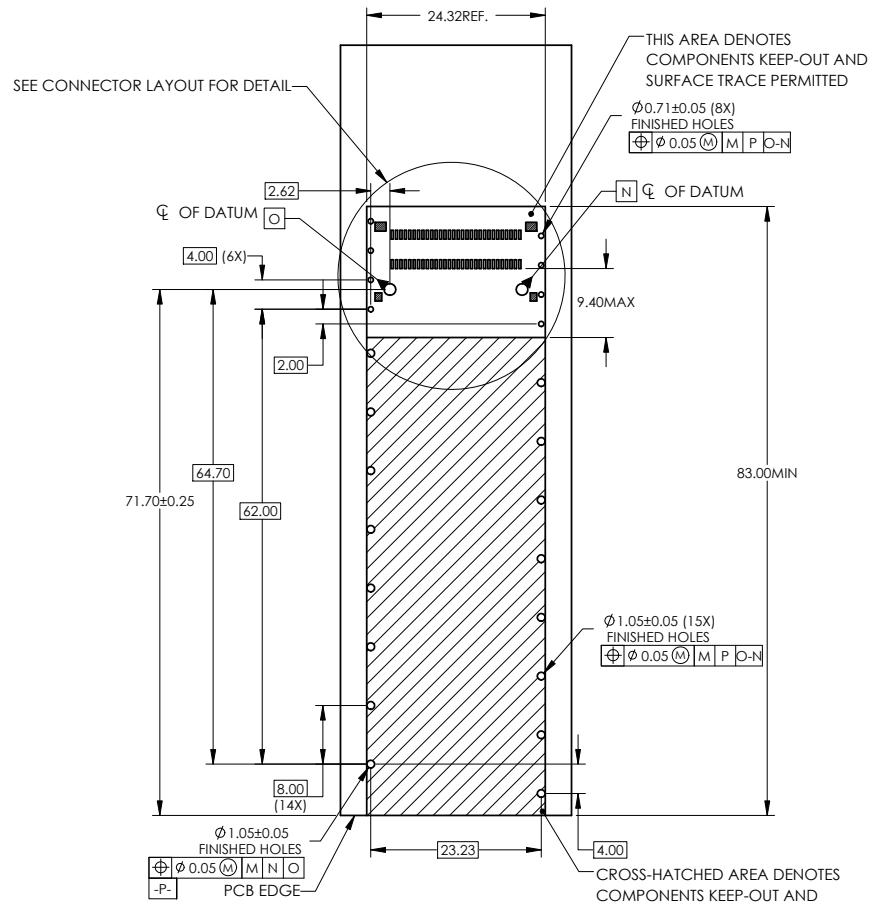
DO NOT SCALE DRAWING

THIS DOCUMENT CONTAINS PROPRIETARY INFORMATION AND SUCH INFORMATION MAY NOT BE DISCLOSED TO OTHERS FOR ANY PURPOSE OR USED FOR MANUFACTURING PUPOSES WITHOUT PERMISSION FROM AMPHENOL CANADA CORP.

UNLESS OTHERWISE SPECIFIED DIMENSIONS ARE IN MILLIMETERS TOLERANCES ARE:		APPROVALS		DATE	Amphenol High Speed Interconnects A Division of Amphenol Corp. www.amphenol-highspeed.com	
DECIMALS	ANGLES	DRAWN	Galen	27-APR-22	TITLE	
XX ± 0.38	± 0.5°	DESIGNED			OSFP 1X1 CAGE WITH TOP OPEN	
XXX ± 0.25		CHECKED	Chigow.X	27-APR-22	MATERIAL AND FINISH	
SEE NOTE 1		QA APPD			SIZE DWG. NO.	
REF.		E APPD			A3	P-UE62-B162G-021EP1
CODE IDENT. NO.	03554	DWG APPD	J.SI	27-APR-22	SCALE	1:1
					PROJECT	
						REV. A
						SHEET 4 OF 6

8 7 6 5 4 3 2 1

REVISIONS				
REV.	ECN	DESCRIPTION	DATE	APPROVED
A		PROPOSAL	27-APR-22	J.SI



RECOMMENDED PCB DESIGN  
FOR SINGLE MOUNTING

DO NOT SCALE DRAWING

THIS DOCUMENT CONTAINS PROPRIETARY INFORMATION AND SUCH INFORMATION MAY NOT BE DISCLOSED TO OTHERS FOR ANY PURPOSE OR USED FOR MANUFACTURING PURPOSES WITHOUT PERMISSION FROM AMPHENOL CANADA CORP.

UNLESS OTHERWISE SPECIFIED DIMENSIONS ARE IN MILLIMETERS TOLERANCES ARE: DECIMALS: X.X ± 0.38 X.XX ± 0.25 MATERIAL AND FINISH: SEE NOTE 1 REF. CODE IDENT. NO.: 03554	APPROVALS	DATE	Amphenol High Speed Interconnects A Division of Amphenol Corp. www.amphenol-highspeed.com	
	DRAWN: Galen	27-APR-22	TITLE	
	DESIGNED:		OSFP 1X1 CAGE WITH TOP OPEN	
	CHECKED: Chigow.X	27-APR-22	QA APPD	
E APPD		SIZE: A3	DWG. NO.: P-UE62-B162G-021EP1	REV. A
DWG APPD: J.SI	27-APR-22	SCALE: 1:1	PROJECT	SHEET 5 OF 6

8 7 6 5 4 3 2 1

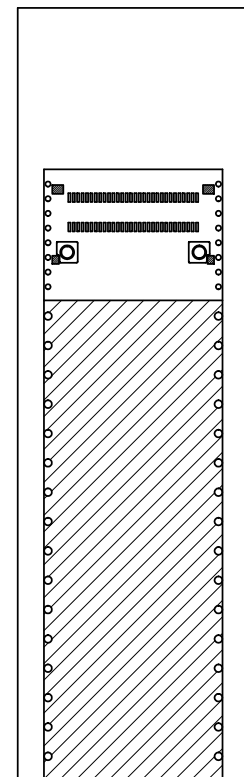
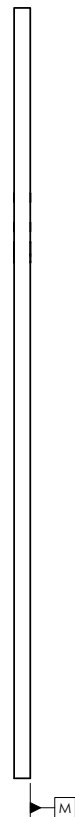
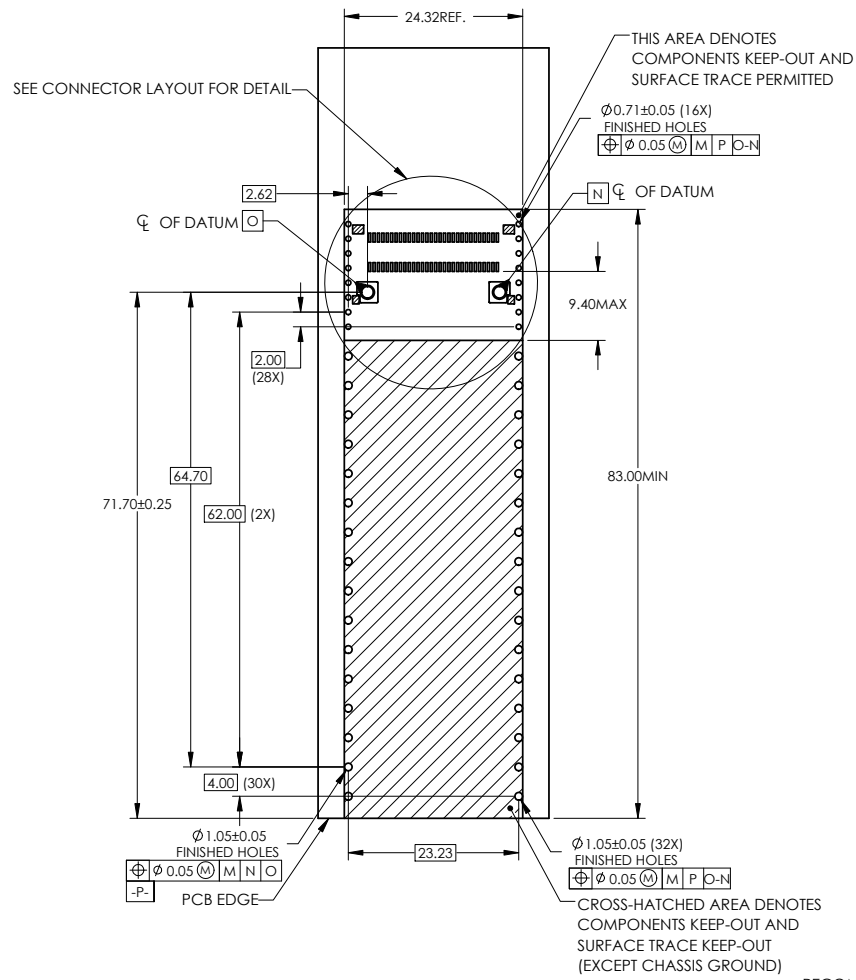
8 7 6 5 4 3 2 1

D  
C  
B  
A

D  
C  
B  
A

**REVISIONS**

REV.	ECN	DESCRIPTION	DATE	APPROVED
A		PROPOSAL	27-APR-22	J.SI



Ø 1.05±0.05  
FINISHED HOLES  
⊕ Ø 0.05 (M) | M | P | O-N  
-P- PCB EDGE

Ø 1.05±0.05 (32X)  
FINISHED HOLES  
⊕ Ø 0.05 (M) | M | P | O-N

CROSS-HATCHED AREA DENOTES  
COMPONENTS KEEP-OUT AND  
SURFACE TRACE KEEP-OUT  
(EXCEPT CHASSIS GROUND)

RECOMMENDED PCB DESIGN  
FOR BELLY TO BELLY MOUNTING

**DO NOT SCALE DRAWING**

THIS DOCUMENT CONTAINS PROPRIETARY INFORMATION AND SUCH INFORMATION MAY NOT BE DISCLOSED TO OTHERS FOR ANY PURPOSE OR USED FOR MANUFACTURING PURPOSES WITHOUT PERMISSION FROM AMPHENOL CANADA CORP.

UNLESS OTHERWISE SPECIFIED  
DIMENSIONS ARE IN MILLIMETERS  
TOLERANCES ARE:

DECIMALS	ANGLES
X.X ± 0.38	± 0.5°
X.XX ± 0.25	

MATERIAL AND FINISH  
**SEE NOTE 1**

REF. E APPD  
CODE IDENT. NO. 03554

APPROVALS	DATE
DRAWN Galen	27-APR-22
DESIGNED	
CHECKED Chigow.X	27-APR-22
QA APPD	
E APPD	
DWG APPD J.SI	27-APR-22

<b>Amphenol High Speed Interconnects</b> <small>A Division of Amphenol Corp. www.amphenol-highspeed.com</small>	
TITLE	
OSFP 1X1 CAGE WITH TOP OPEN	
SIZE A3	DWG. NO. P-UE62-B162G-021EP1
SCALE 1:1	PROJECT
SHEET 6 OF 6	REV. A