

REVISIONS				
REV.	ECN	DESCRIPTION	DATE	APPROVED
A		PROPOSAL	02-NOV-21	J.SI
B		UPDATED DRAWING	21-MAR-22	J.SI

NOTES:

- 1) MATERIAL: COPPER ALLOY.
- 2) PLATING: 2.54 μ m MIN.NICKEL.
- 3) PACKAGING: TRAY PACKAGING.
- 4) COMPLIES WITH OSFP MSA .
- 5) AMPHENOL PART NUMBER:
UE62-B162G-021E1

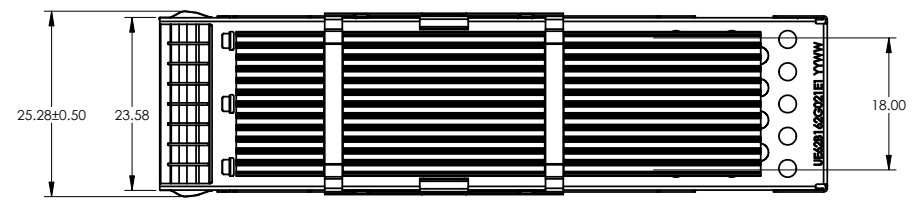
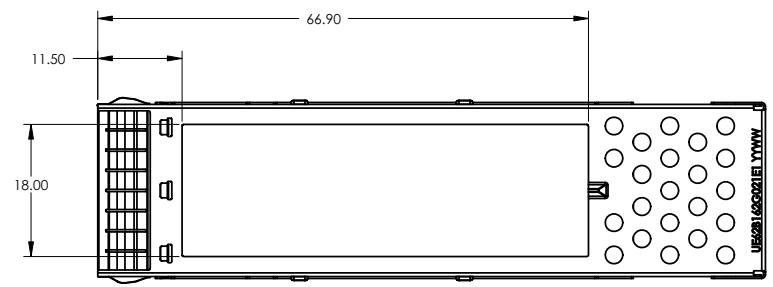


DO NOT SCALE DRAWING

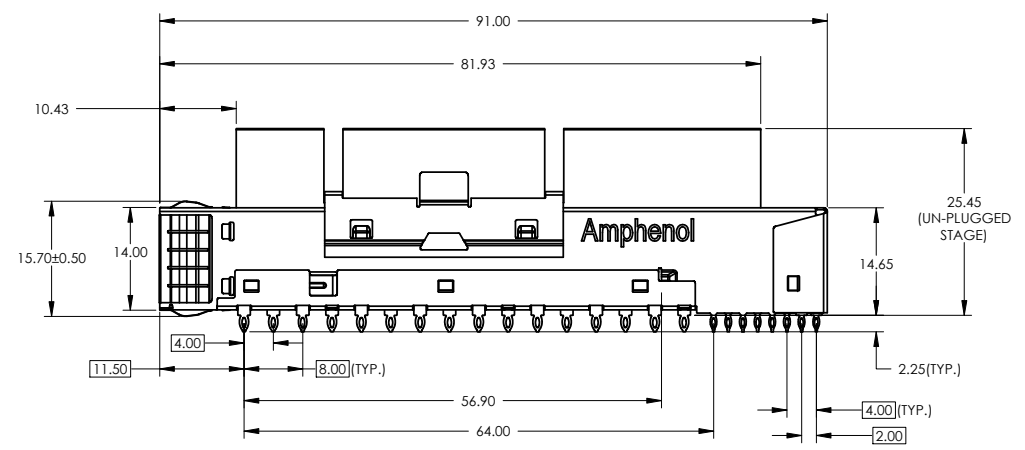
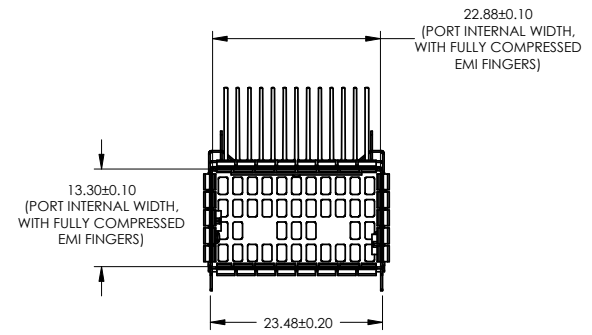
THIS DOCUMENT CONTAINS PROPRIETARY INFORMATION AND SUCH INFORMATION MAY NOT BE DISCLOSED TO OTHERS FOR ANY PURPOSE OR USED FOR MANUFACTURING PURPOSES WITHOUT PERMISSION FROM AMPHENOL CANADA CORP.

UNLESS OTHERWISE SPECIFIED DIMENSIONS ARE IN MILLIMETERS TOLERANCES ARE:		APPROVALS	DATE	Amphenol High Speed Interconnects <small>A Division of Amphenol Corp. www.amphenol-highspeed.com</small>	
DECIMALS X.X \pm 0.38 X.XX \pm 0.25	ANGLES \pm 0.5°	DRAWN Galen	02-NOV-21	TITLE	
MATERIAL AND FINISH SEE NOTE 1		DESIGNED		OSFP 1X1 CAGE WITH TOP OPEN	
REF.		CHECKED Chigow.X	02-NOV-21	SIZE A3	DWG. NO. P-UE62-B162G-021E1
CODE IDENT. NO. 03554		QA APPD		SCALE 1:1	PROJECT
		E APPD		REV. B	SHEET 1 OF 6
		DWG APPD J.SI	02-NOV-21		

REVISIONS				
REV.	ECN	DESCRIPTION	DATE	APPROVED
A		PROPOSAL	02-NOV-21	J.SI
B		UPDATED DRAWING	21-MAR-22	J.SI



CAGE ONLY



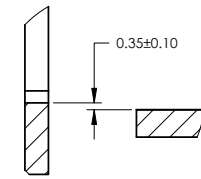
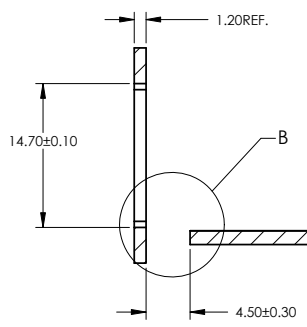
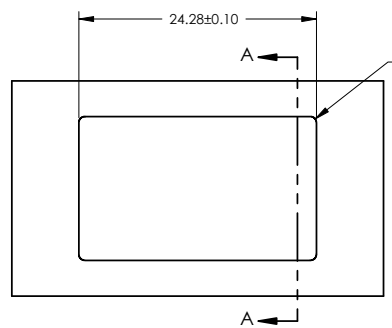
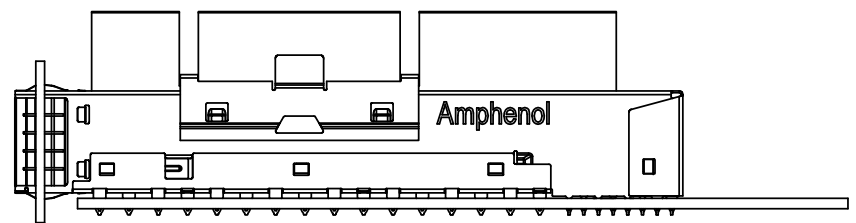
DO NOT SCALE DRAWING

THIS DOCUMENT CONTAINS PROPRIETARY INFORMATION AND SUCH INFORMATION MAY NOT BE DISCLOSED TO OTHERS FOR ANY PURPOSE OR USED FOR MANUFACTURING PURPOSES WITHOUT PERMISSION FROM AMPHENOL CANADA CORP.

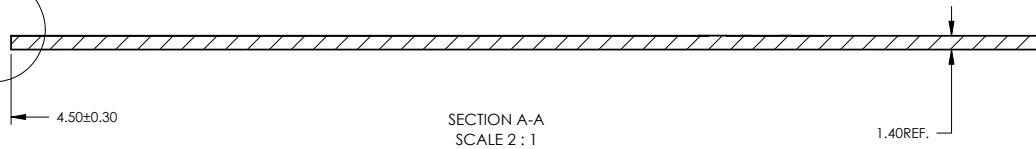
UNLESS OTHERWISE SPECIFIED DIMENSIONS ARE IN MILLIMETERS TOLERANCES ARE:		APPROVALS		DATE		Amphenol High Speed Interconnects A Division of Amphenol Corp. www.amphenol-highspeed.com	
DECIMALS	ANGLES	DRAWN	Galen	02-NOV-21	TITLE		
X.X ± 0.38	± 0.5°	DESIGNED			OSFP 1X1 CAGE WITH TOP OPEN		
X.XX ± 0.25		CHECKED	Chigow.X	02-NOV-21			
MATERIAL AND FINISH		QA APPD			SIZE	DWG. NO.	REV.
SEE NOTE 1		E APPD			A3	P-UE62-B162G-021E1	B
REF.		DWG APPD	J.SI	02-NOV-21	SCALE	PROJECT	SHEET
CODE IDENT. NO.	03554				1:1		2 OF 6

8 7 6 5 4 3 2 1

REVISIONS				
REV.	ECN	DESCRIPTION	DATE	APPROVED
A		PROPOSAL	02-NOV-21	J.SI
B		UPDATED DRAWING	21-MAR-22	J.SI

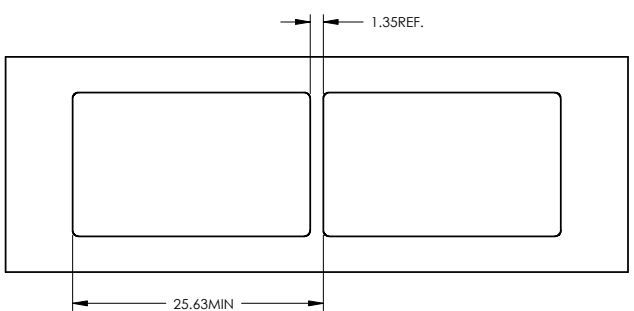


DETAIL B
SCALE 4 : 1



SECTION A-A
SCALE 2 : 1

RECOMMENDED BEZE DESIGN
FOR SINGLE SAID MOUNTING

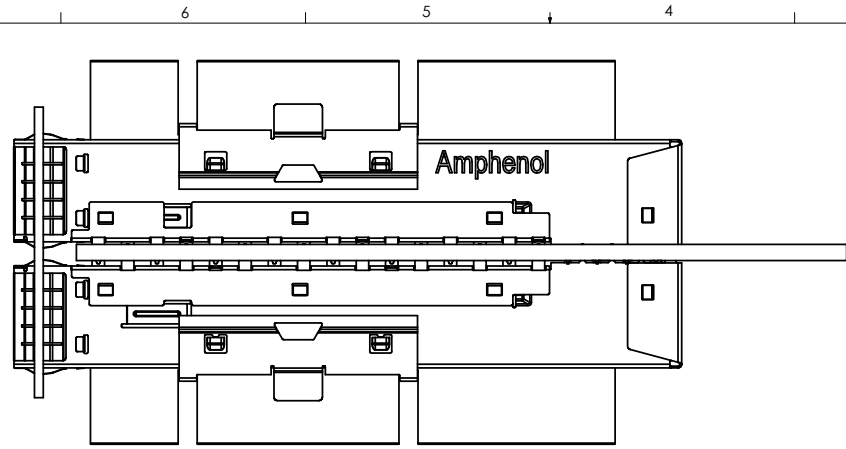


DO NOT SCALE DRAWING

THIS DOCUMENT CONTAINS PROPRIETARY INFORMATION AND SUCH INFORMATION MAY NOT BE DISCLOSED TO OTHERS FOR ANY PURPOSE OR USED FOR MANUFACTURING PURPOSES WITHOUT PERMISSION FROM AMPHENOL CANADA CORP.

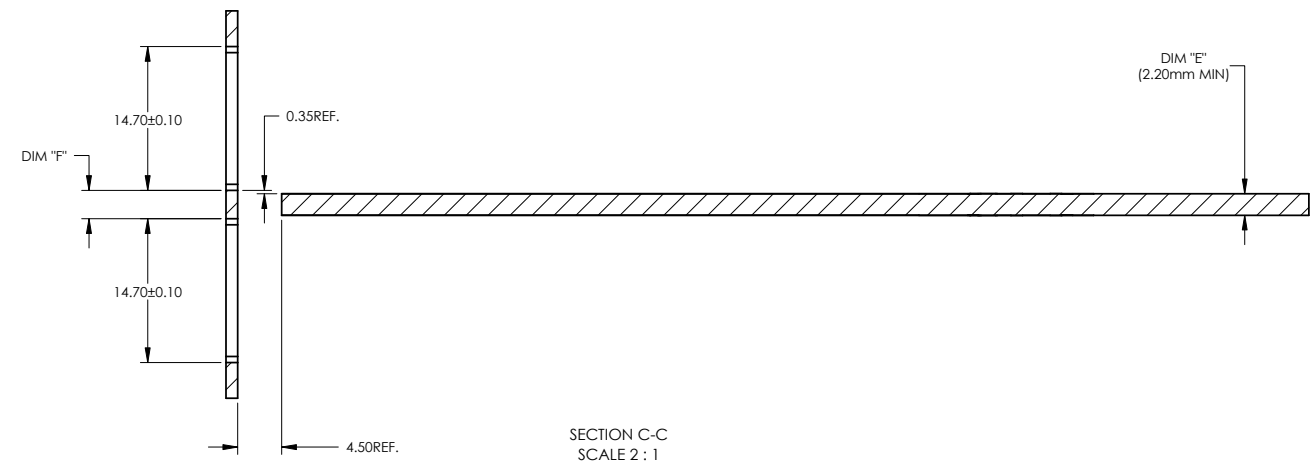
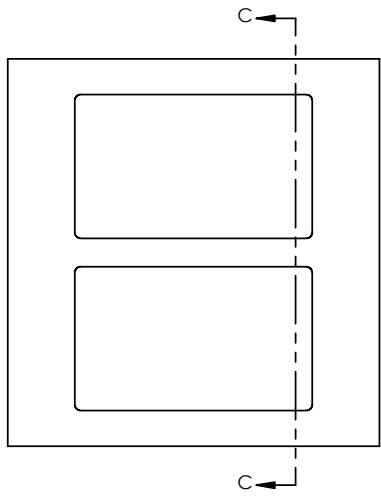
<small>UNLESS OTHERWISE SPECIFIED DIMENSIONS ARE IN MILLIMETERS TOLERANCES ARE:</small> DECIMALS: X.X ± 0.38 X.XX ± 0.25 ANGLES: ± 0.5° MATERIAL AND FINISH: SEE NOTE 1 REF.: CODE IDENT. NO.: 03554	APPROVALS	DATE	Amphenol High Speed Interconnects <small>A Division of Amphenol Corp. www.amphenol-highspeed.com</small>		
	DRAWN: Galen	02-NOV-21	TITLE		
	DESIGNED:		OSFP 1X1 CAGE WITH TOP OPEN		
	CHECKED: Chigow.X	02-NOV-21	SIZE: A3	DWG. NO.: P-UE62-B162G-021E1	REV. B
	QA APPD:		SCALE: 1:1	PROJECT:	SHEET: 3 OF 6
	DWG APPD: J.SI	02-NOV-21	2	1	

8 7 6 5 4 3 2 1



REVISIONS				
REV.	ECN	DESCRIPTION	DATE	APPROVED
A		PROPOSAL	02-NOV-21	J.SI
B		UPDATED DRAWING	21-MAR-22	J.SI

NOTE:
 PANEL CUTOUT SIZES PER OSFP MSA SPEC. FOR BELLY TO BELLY MOUNTING, DIM "E" (PCB THICKNESS) IS 2.20 mm MIN. DIM "F" RELATED TO DIM "E". FOR DIM "F" = DIM "E" + 0.70 mm. THE PANEL CUTOUT 14.70 mm MIGHT BE INCREASED UP TO 15.10 mm IN ORDER TO ACCOMMODATE PCB TOLERANCE.



SECTION C-C
 SCALE 2 : 1

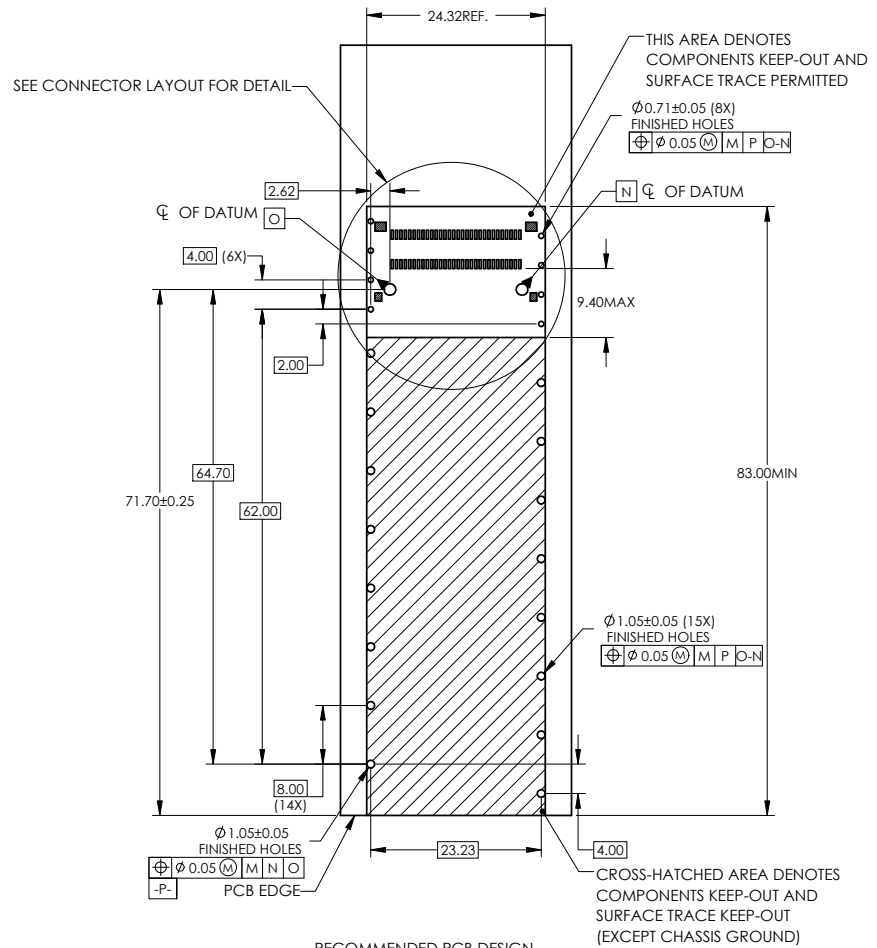
RECOMMENDED BEZE DESIGN
 (BELLY TO BELLY CAGE MOUNTING)

DO NOT SCALE DRAWING

THIS DOCUMENT CONTAINS PROPRIETARY INFORMATION AND SUCH INFORMATION MAY NOT BE DISCLOSED TO OTHERS FOR ANY PURPOSE OR USED FOR MANUFACTURING PURPOSES WITHOUT PERMISSION FROM AMPHENOL CANADA CORP.

UNLESS OTHERWISE SPECIFIED DIMENSIONS ARE IN MILLIMETERS TOLERANCES ARE:		APPROVALS		DATE	Amphenol High Speed Interconnects A Division of Amphenol Corp. www.amphenol-highspeed.com	
DECIMALS	ANGLES	DRAWN	Galen	02-NOV-21	TITLE	
XX ± 0.38	± 0.5°	DESIGNED			OSFP 1X1 CAGE WITH TOP OPEN	
XXX ± 0.25		CHECKED	Chigow.X	02-NOV-21	SIZE DWG. NO.	
MATERIAL AND FINISH		QA APPD			A3	P-UE62-B162G-021E1
SEE NOTE 1		E APPD			SCALE	1:1
REF.		DWG APPD	J.SI	02-NOV-21	PROJECT	
CODE IDENT. NO.	03554				SHEET	4 OF 6

REVISIONS				
REV.	ECN	DESCRIPTION	DATE	APPROVED
A		PROPOSAL	02-NOV-21	J.SI
B		UPDATED DRAWING	21-MAR-22	J.SI



RECOMMENDED PCB DESIGN
FOR SINGLE MOUNTING

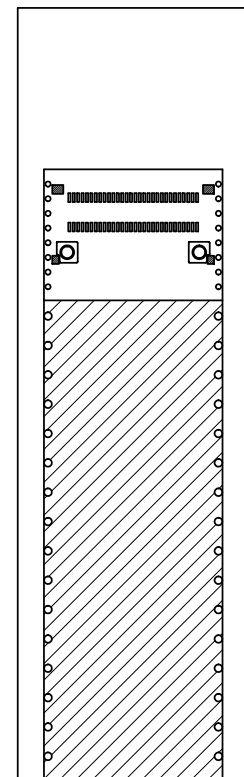
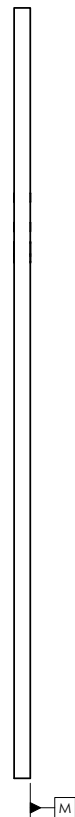
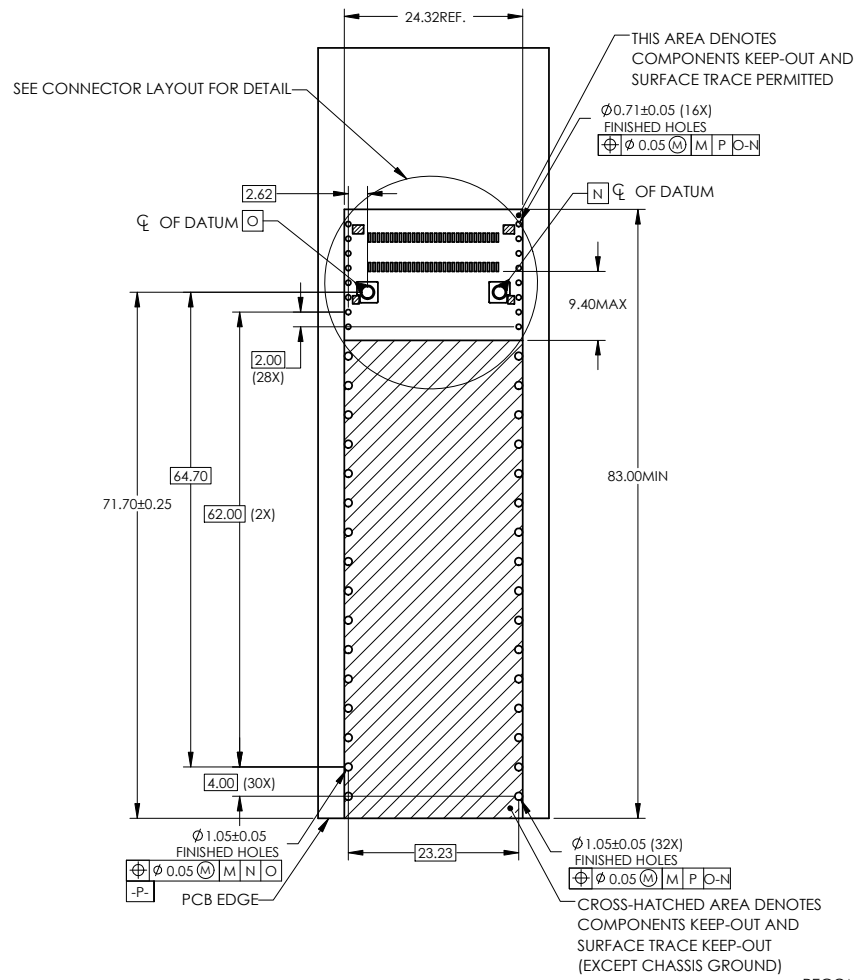
DO NOT SCALE DRAWING

THIS DOCUMENT CONTAINS PROPRIETARY INFORMATION AND SUCH INFORMATION MAY NOT BE DISCLOSED TO OTHERS FOR ANY PURPOSE OR USED FOR MANUFACTURING PURPOSES WITHOUT PERMISSION FROM AMPHENOL CANADA CORP.

UNLESS OTHERWISE SPECIFIED DIMENSIONS ARE IN MILLIMETERS TOLERANCES ARE:		APPROVALS		DATE		Amphenol High Speed Interconnects A Division of Amphenol Corp. www.amphenol-highspeed.com	
DECIMALS X.X ± 0.38 X.XX ± 0.25		ANGLES ± 0.5°		DRAWN Galen		02-NOV-21	
MATERIAL AND FINISH SEE NOTE 1		CHECKED Chigow.X		DESIGNED		TITLE OSFP 1X1 CAGE WITH TOP OPEN	
REF.		E APPD		QA APPD		SIZE DWG. NO. A3 P-UE62-B162G-021E1	
CODE IDENT. NO. 03554		DWG APPD J.SI		02-NOV-21		SCALE 1:1 PROJECT SHEET 5 OF 6	

REVISIONS

REV.	ECN	DESCRIPTION	DATE	APPROVED
A		PROPOSAL	02-NOV-21	J.SI
B		UPDATED DRAWING	21-MAR-22	J.SI



UNLESS OTHERWISE SPECIFIED DIMENSIONS ARE IN MILLIMETERS TOLERANCES ARE: DECIMALS ANGLES X.X ± 0.38 ± 0.5° X.XX ± 0.25	APPROVALS	DATE	Amphenol High Speed Interconnects <small>A Division of Amphenol Corp. www.amphenol-highspeed.com</small>	
	DRAWN Galen	02-NOV-21	TITLE	
	DESIGNED		OSFP 1X1 CAGE WITH TOP OPEN	
	CHECKED Chigow.X	02-NOV-21		
MATERIAL AND FINISH SEE NOTE 1	QA APPD		SIZE A3	DWG. NO. P-UE62-B162G-021E1
REF.	E APPD		SCALE 1:1	PROJECT
CODE IDENT. NO. 03554	DWG APPD J.SI	02-NOV-21	SHEET 1	REV. B

8 7 6 5 4 3 2 1

D

C

B

A

8 7 6 5 4 3 2 1