

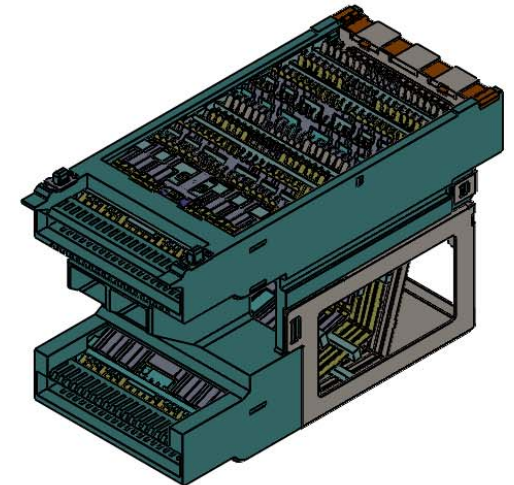
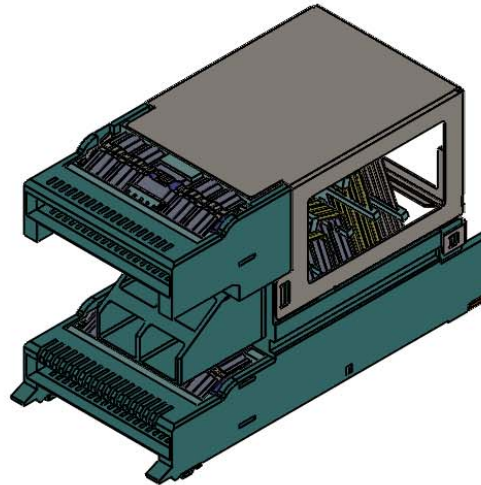
AMPHENOL PART NUMBER CONFIGURATION

V36-BEZ02-X07000X

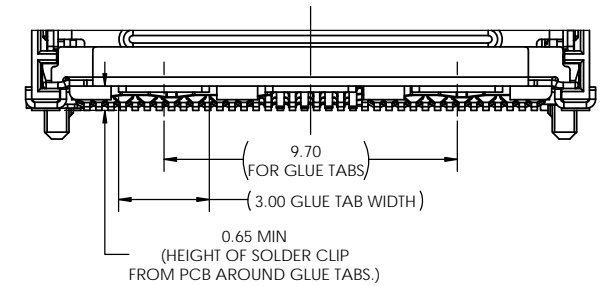
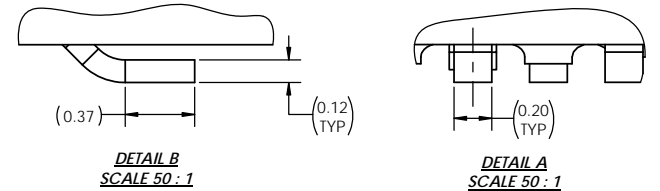
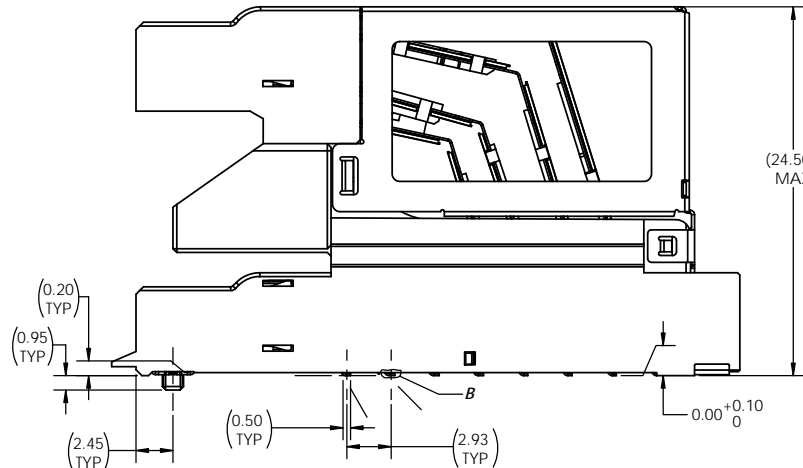
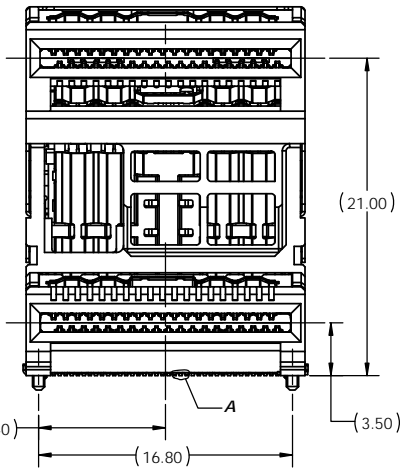
PACKAGING OPTION
T = TAPE & REEL

PLATING OPTION

- 2 = 30µin (0.76µm) GOLD OVER PALLADIUM-NICKEL AT MATING AREA
100µin-250µin (2.54µm-6.35µm) MATTE TIN TERMINATION
- 3 = 30µin (0.76µm) GOLD AT MATING AREA
100µin-250µin (2.54µm-6.35µm) MATTE TIN TERMINATION
- 6 = 15µin (0.38µm) GOLD AT MATING AREA
100µin-250µin (2.54µm-6.35µm) MATTE TIN TERMINATION



REVISIONS			
REV	DESCRIPTION, ECN, EAR NO.	DATE	APPD
C	CAGE PIN HOLE LOCATIONS REVISED	SEP24/20	CM
D	CAGE PIN HOLE LOCATIONS REVISED	NOV17/20	CM
E	NOTE REVISED, PRE. STAMP REMOVED	DEC02/20	CM



NOTES:

- 1) MATERIAL:
HOUSING: LCP, UL94V-0
CONTACT: HIGH PERFORMANCE COPPER ALLOY
PLATING: SEE OPTIONS LIST, NICKEL UNDER PLATE ALL OVER
- 2) FOR SOLDER PROCESS PARAMETERS, PLEASE SEE APPLICATION SPECIFICATION HS-08-0011



UNLESS SPECIFIED OTHERWISE	DRAWN	KHALID H.	APR13/20
PRIMARY UNITS MILLIMETRES	CHECKED	CHRIS M.	SEP04/20
SECONDARY INCHES	M.E. APPD		
REFERENCE IN PARENTHESES	Q.A. APPD		
GENERAL TOLERANCES	DWG APPD	ARKADY Z.	SEP04/20
1 DECIMAL PLACE ±0.25	ENG. REL. NO.		
2 DECIMAL PLACES ±0.15	REF.		
ANGULAR DEGREES ±2°	THIRD ANGLE PROJECTION		

Amphenol High Speed Interconnects
A Division of Amphenol Corp. www.amphenolcanada.com

**QSFP-DD STACKED SMT
112G RECEPTACLE CONNECTOR**

DWG. NO. **P-V36-BEZ02-XXXXXXX** REV **E**

CODE ID NO. 03554 DWG SIZE: C SCALE: 2:1 SHEET 1 OF 3

THESE AREAS DENOTE COMPONENT AND TRACE KEEP-OUT

PTH $\varnothing 0.56 \pm 0.05$ (10X)
 DRILL SIZE 0.66
 CAGE PIN HOLE (SEE NOTE 3)
 $\varnothing 0.10$ Z L-K R

THIS AREA DENOTES COMPONENT KEEP-OUT (TRACE ALLOWED)

HATCHED AREA DENOTES COMPONENT AND TRACE KEEP-OUT (EXCEPT CHASSIS GROUND)

PTH $\varnothing 1.05 \pm 0.05$ (7X)
 DRILL SIZE 1.15
 CAGE PIN HOLE (SEE NOTE 3)
 $\varnothing 0.10$ Z L-K R

- NOTES:
- DATUMS X AND Y ESTABLISHED BY CUSTOMER FIDUCIAL.
 - LOCATION OF EDGE OF PCB IS APPLICATION SPECIFIC.
 - FINISHED HOLE SIZE.

THIS DOCUMENT CONTAINS PROPRIETARY INFORMATION AND SUCH INFORMATION MAY NOT BE DISCLOSED TO OTHERS FOR ANY PURPOSE OR USED FOR MANUFACTURING PURPOSES WITHOUT WRITTEN PERMISSION FROM AMPHENOL CANADA CORP.



REVISIONS			
REV	DESCRIPTION, ECN, EAR NO.	DATE	APPD
	SEE SHEET 1		

1.44 MIN

NPTH $\varnothing 1.55 \pm 0.05$ (2X)
 CONNECTOR LOCATING PIN HOLE (SEE NOTE 1)
 $\varnothing 0.05$ Z X Y

**RECOMMENDED PCB LAYOUT
 SINGLE-SIDED MOUNTING
 STANDARD FOOTPRINT**

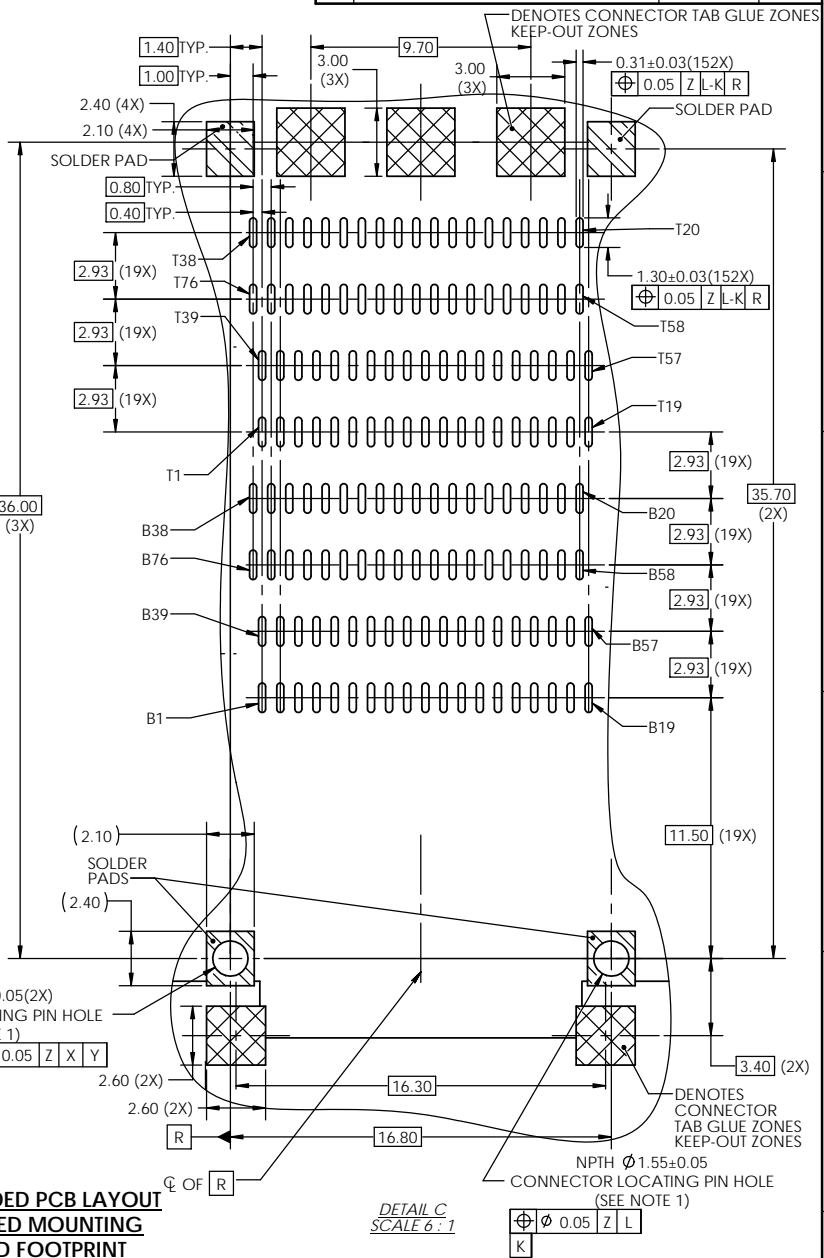
UNLESS SPECIFIED OTHERWISE	DRAWN	KHALID H.	APR13/20
PRIMARY UNITS MILLIMETRES	CHECKED	CHRIS M.	SEP04/20
SECONDARY INCHES	M.E. APPD		
REFERENCE IN PARENTHESES	Q.A. APPD		
GENERAL TOLERANCES	DWG APPD	ARKADY Z.	SEP04/20
1 DECIMAL PLACE ± 0.25	ENG. REL. NO.		
2 DECIMAL PLACES ± 0.15	REF.		
ANGULAR DEGREES $\pm 2^\circ$	THIRD ANGLE PROJECTION		
	DO NOT SCALE DRAWING		

DETAIL C
 SCALE 6:1

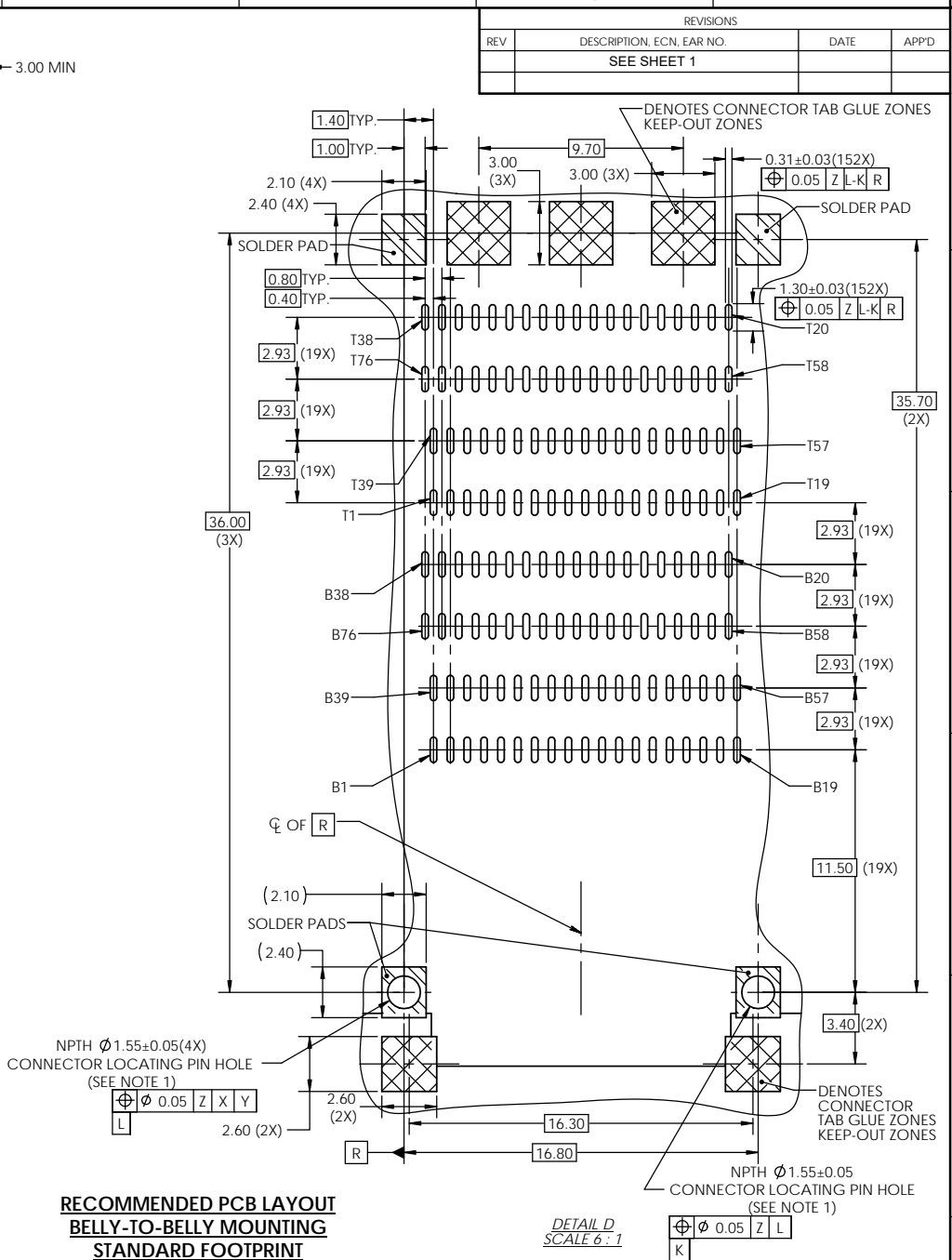
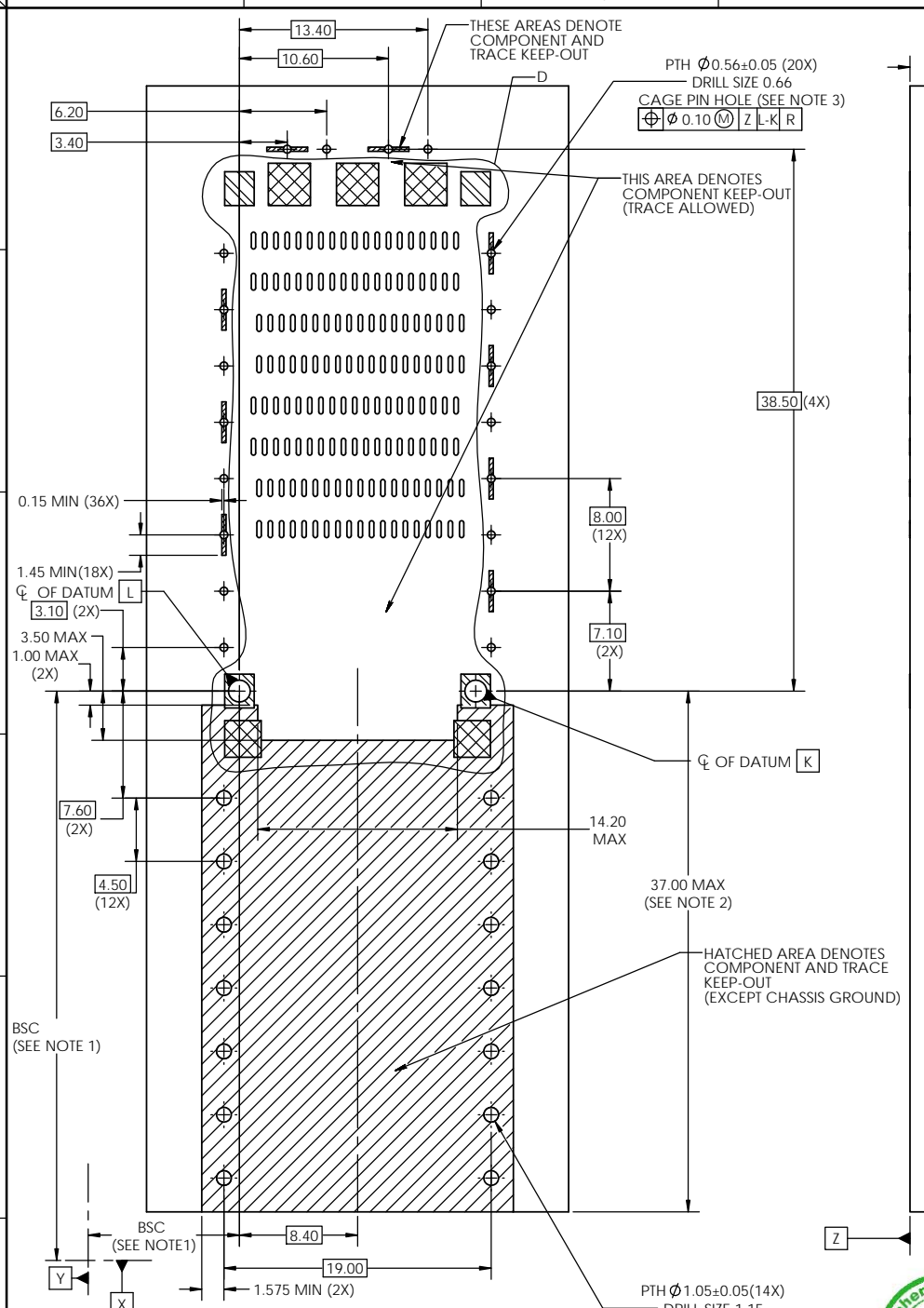
Amphenol High Speed Interconnects
 A Division of Amphenol Corp. www.amphenolcanada.com

**QSFP-DD STACKED SMT
 112G RECEPTACLE CONNECTOR**

DWG. NO.	P-V36-BEZ02-XXXXXXX	REV	E
CODE ID NO.	03554	DWG. SIZE:	C
SCALE:	2:1	SHEET	2 OF 3



REVISIONS			
REV	DESCRIPTION, ECN, EAR NO.	DATE	APP'D
	SEE SHEET 1		



- NOTES:
- DATUMS X AND Y ESTABLISHED BY CUSTOMER FIDUCIAL.
 - LOCATION OF EDGE OF PCB IS APPLICATION SPECIFIC.
 - FINISHED HOLE SIZE.

**RECOMMENDED PCB LAYOUT
BELLY-TO-BELLY MOUNTING
STANDARD FOOTPRINT**

UNLESS SPECIFIED OTHERWISE	DRAWN	KHALID H.	APR13/20
PRIMARY UNITS MILLIMETRES	CHECKED	CHRIS M.	SEP04/20
SECONDARY INCHES	M.E. APP'D		
REFERENCE IN PARENTHESES	Q.A. APP'D		
GENERAL TOLERANCES	DWG APP'D	ARKADY Z.	SEP04/20
1 DECIMAL PLACE ±0.25	ENG. REL. NO.		
2 DECIMAL PLACES ±0.15	REF.		
ANGULAR DEGREES ±2°	THIRD ANGLE PROJECTION		
	DO NOT SCALE DRAWING		

DETAIL D
SCALE 6:1

Amphenol High Speed Interconnects
A Division of Amphenol Corp. www.amphenolcanada.com

**QSFP-DD STACKED SMT
112G RECEPTACLE CONNECTOR**

DWG. NO.	P-V36-BEZ02-XXXXXXX	REV	E
CODE ID NO.	03554	DWG. SIZE:	C
SCALE:	2:1	SHEET	3 OF 3

