

AMPHENOL PART NUMBER CONFIGURATION

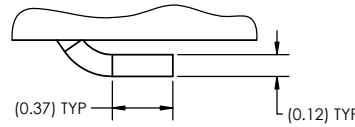
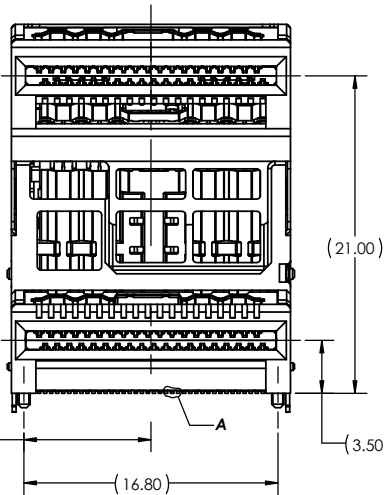
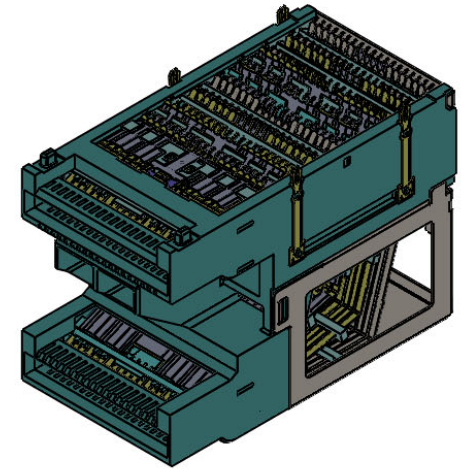
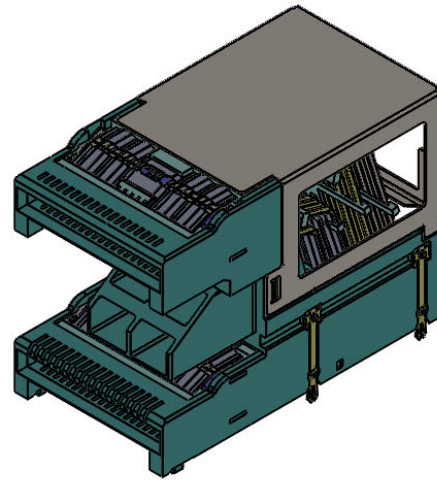
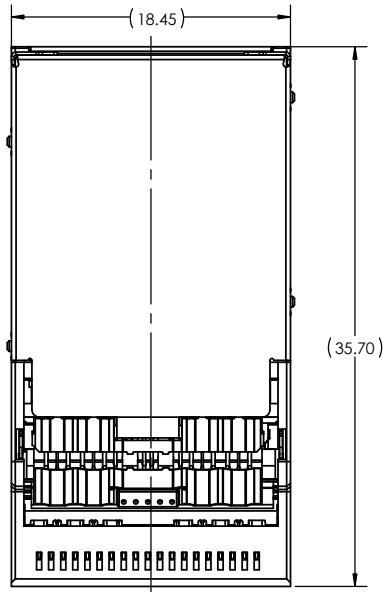
V36-BEZ01-X04000X

PACKAGING OPTION  
T = TAPE & REEL

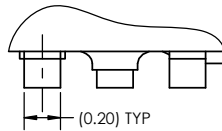
PLATING OPTION

- 2 = 30µin (0.76µm) GOLD OVER PALLADIUM-NICKEL AT MATING AREA  
100µin-250µin (2.54µm-6.35µm) MATTE TIN TERMINATION
- 3 = 30µin (0.76µm) GOLD AT MATING AREA  
100µin-250µin (2.54µm-6.35µm) MATTE TIN TERMINATION
- 6 = 15µin (0.38µm) GOLD AT MATING AREA  
100µin-250µin (2.54µm-6.35µm) MATTE TIN TERMINATION

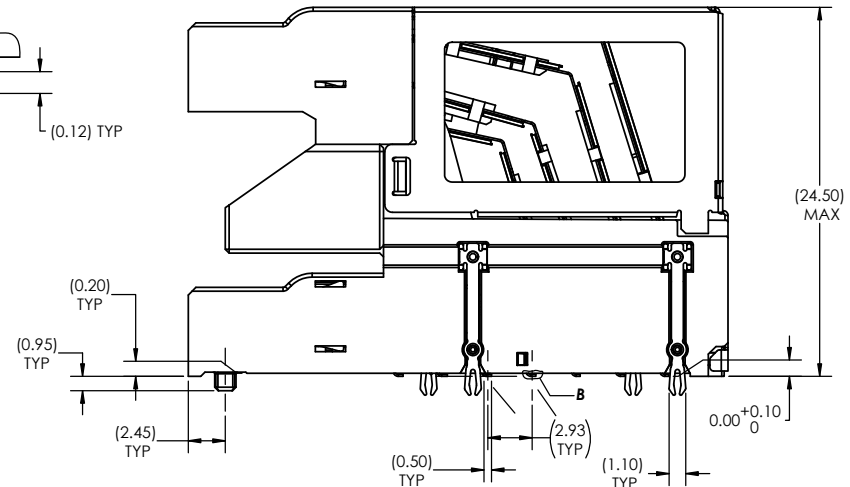
REVISIONS			
REV	DESCRIPTION, ECN, EAR NO.	DATE	APP'D
J	ADDED PCB FOOTPRINTS - SHEETS 4 & 5	NOV09/20	CM
K	ADDED ANCHOR PIN HOLE NOTE	DEC19/20	CM
L	UPDATED SHEET 1 VIEWS	FEB03/21	CM



DETAIL A  
SCALE 48 : 1



DETAIL B  
SCALE 48 : 1



MATERIAL:

HOUSING: LCP, UL94V-0  
CONTACT: HIGH PERFORMANCE COPPER ALLOY  
PLATING: SEE OPTIONS LIST, NICKEL UNDER PLATE ALL OVER  
ANCHOR PIN: PHOSPHOR BRONZE  
PLATING: MATTE TIN OVER NICKEL UNDER PLATE



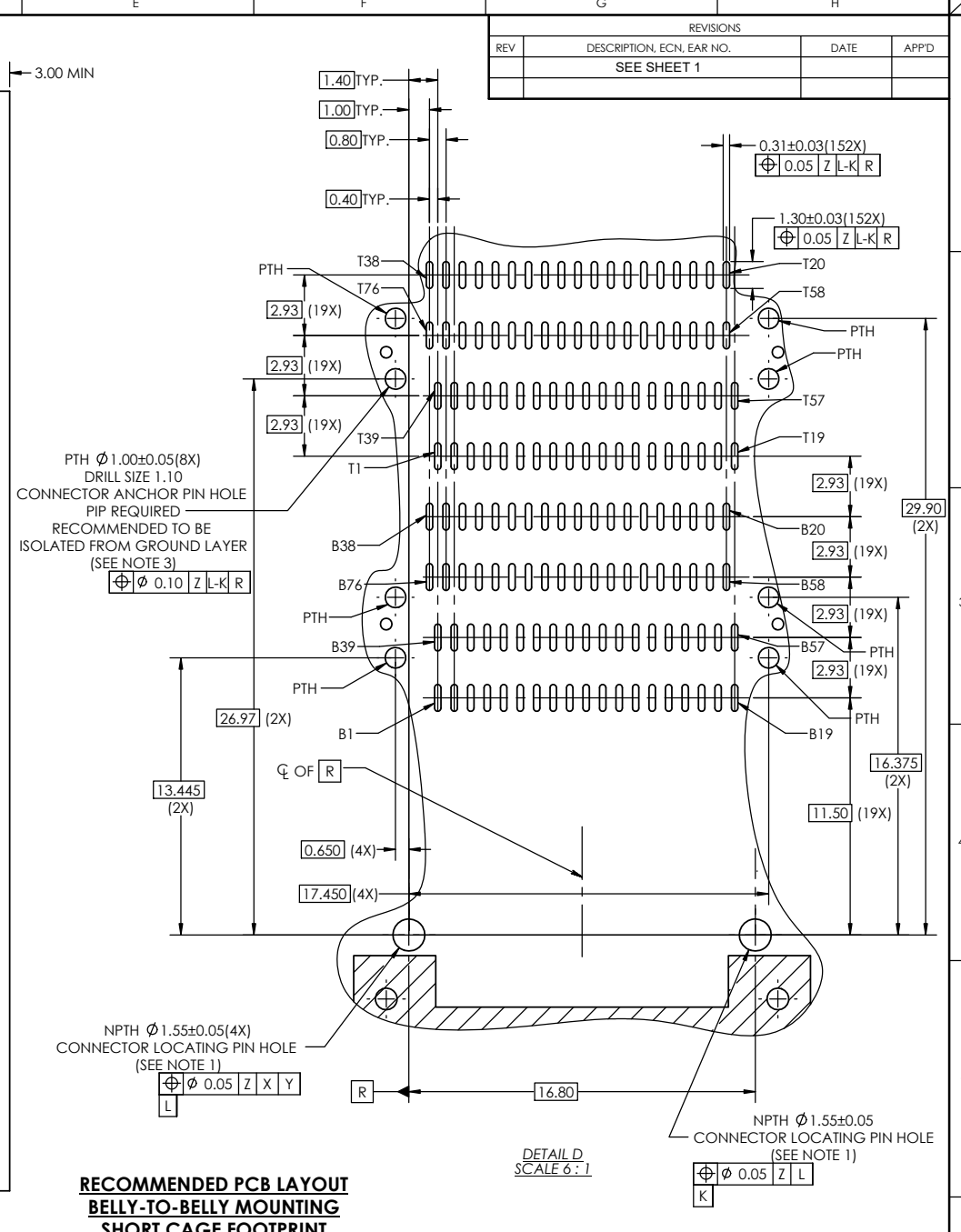
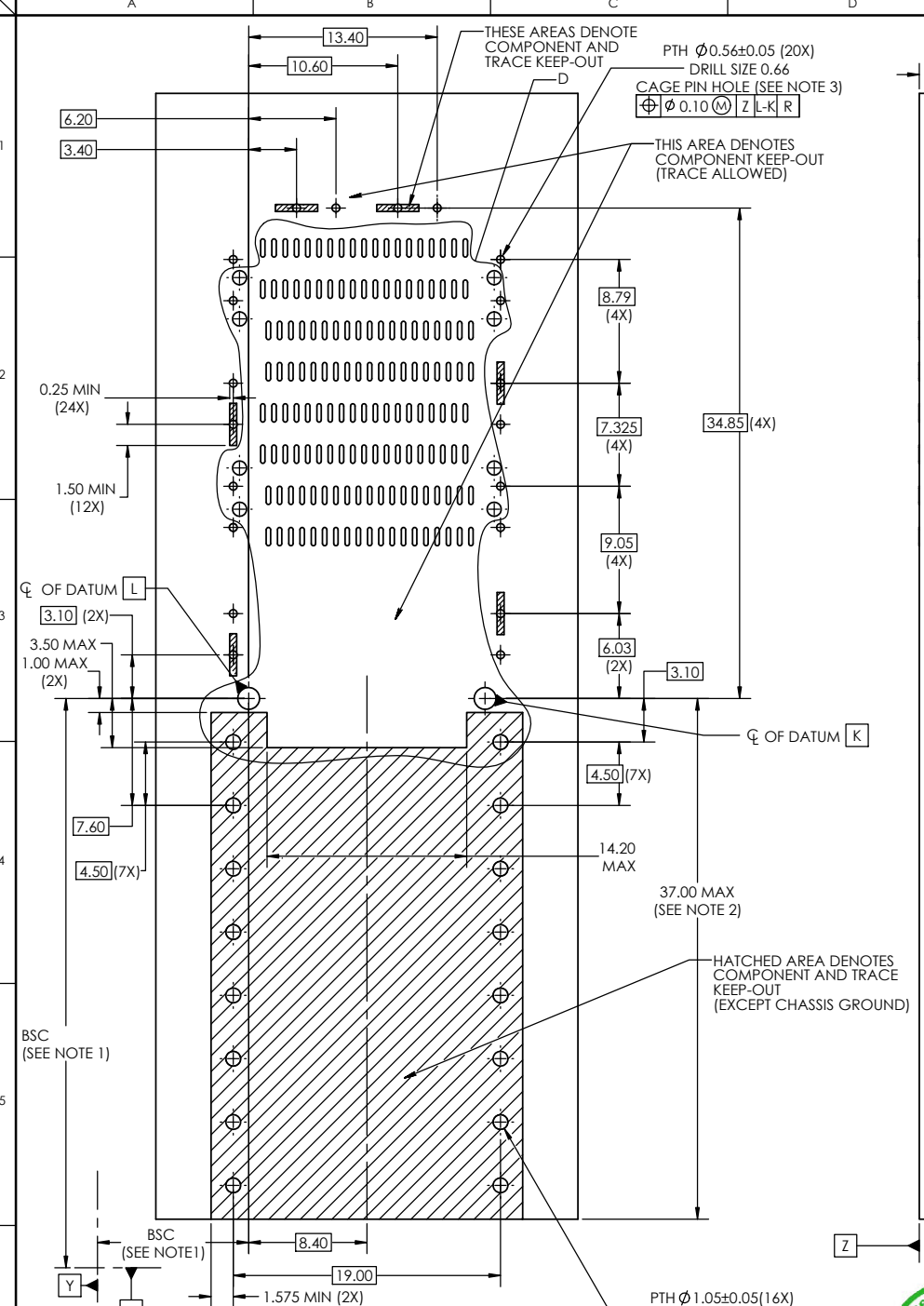
UNLESS SPECIFIED OTHERWISE	DRAWN	KHALID H.	APR13/20
PRIMARY UNITS	MILLIMETRES	CHECKED	CHRIS M.
SECONDARY	INCHES	M.E. APP'D	APR28/20
REFERENCE IN PARENTHESES	Q.A. APP'D		
GENERAL TOLERANCES	DWG APP'D	ARKADY Z.	APR13/20
1 DECIMAL PLACE	±0.25	ENG. REL. NO.	
2 DECIMAL PLACES	±0.15	REF.	
ANGULAR DEGREES	±2°	THIRD ANGLE PROJECTION	

**Amphenol High Speed Interconnects**  
A Division of Amphenol Corp. [www.amphenolcanada.com](http://www.amphenolcanada.com)

**QSFP-DD STACKED SMT  
112G RECEPTACLE CONNECTOR**

DWG. NO.	<b>P-V36-BEZ01-XXXXXXX</b>	REV	<b>L</b>
CODE ID NO.	03554	DWG SIZE:	C
SCALE:	2:1	SHEET	1 OF 5





REVISIONS			
REV	DESCRIPTION, ECN, EAR NO.	DATE	APP'D
	SEE SHEET 1		

- NOTES:
- DATUMS X AND Y ESTABLISHED BY CUSTOMER FIDUCIAL.
  - LOCATION OF EDGE OF PCB IS APPLICATION SPECIFIC.
  - FINISHED HOLE SIZE.

**RECOMMENDED PCB LAYOUT  
BELLY-TO-BELLY MOUNTING  
SHORT CAGE FOOTPRINT**

UNLESS SPECIFIED OTHERWISE	DRAWN	KHALID H.	APR13/20
PRIMARY UNITS MILLIMETRES	CHECKED	CHRIS M.	APR28/20
SECONDARY INCHES	M.E. APP'D		
REFERENCE IN PARENTHESES	Q.A. APP'D		
GENERAL TOLERANCES	DWG APP'D	ARKADY Z.	APR13/20
1 DECIMAL PLACE ±0.25	ENG. REL. NO.		
2 DECIMAL PLACES ±0.15	REF.		
ANGULAR DEGREES ±2°	THIRD ANGLE PROJECTION		

**Amphenol High Speed Interconnects**  
A Division of Amphenol Corp. [www.amphenolcanada.com](http://www.amphenolcanada.com)

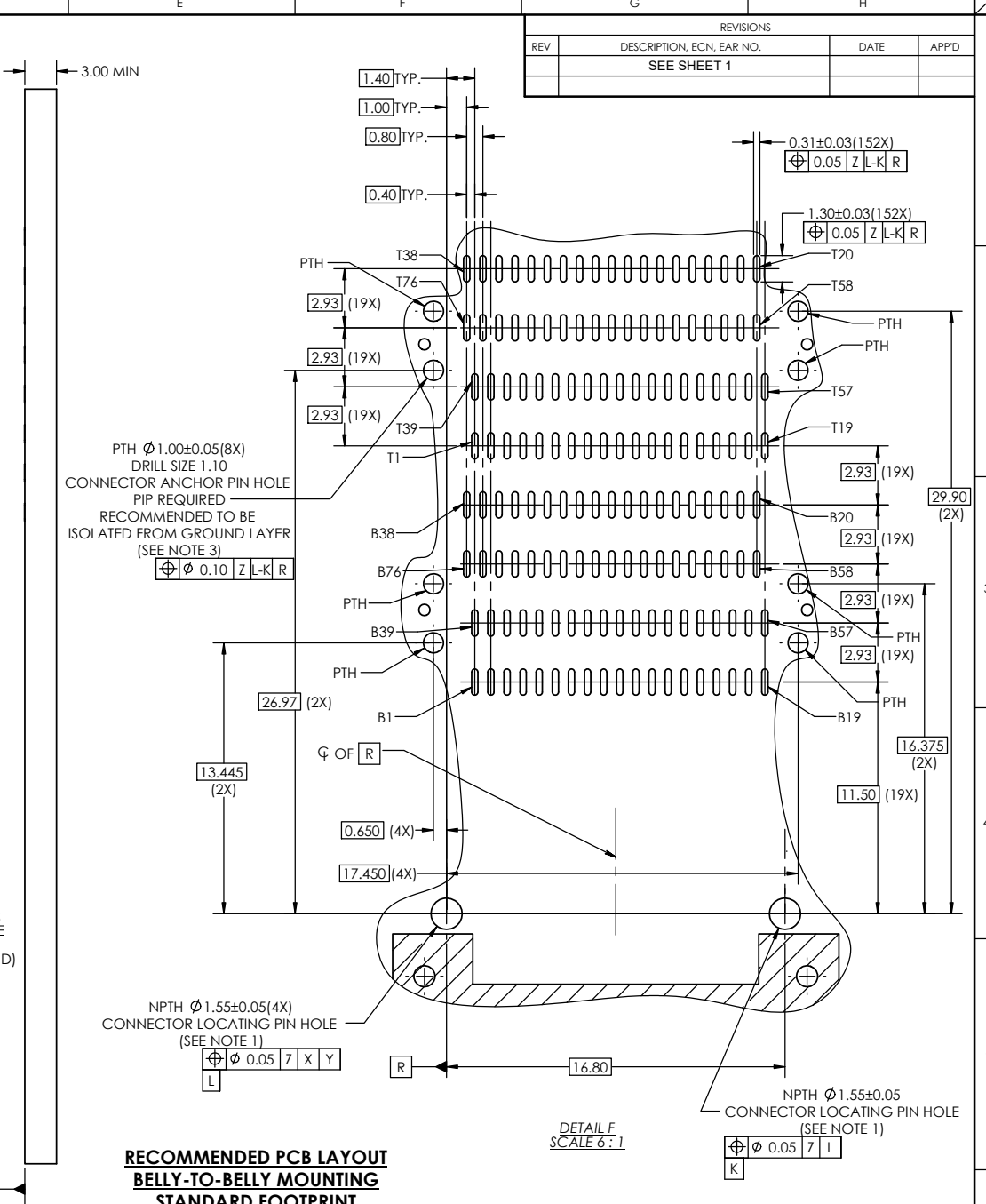
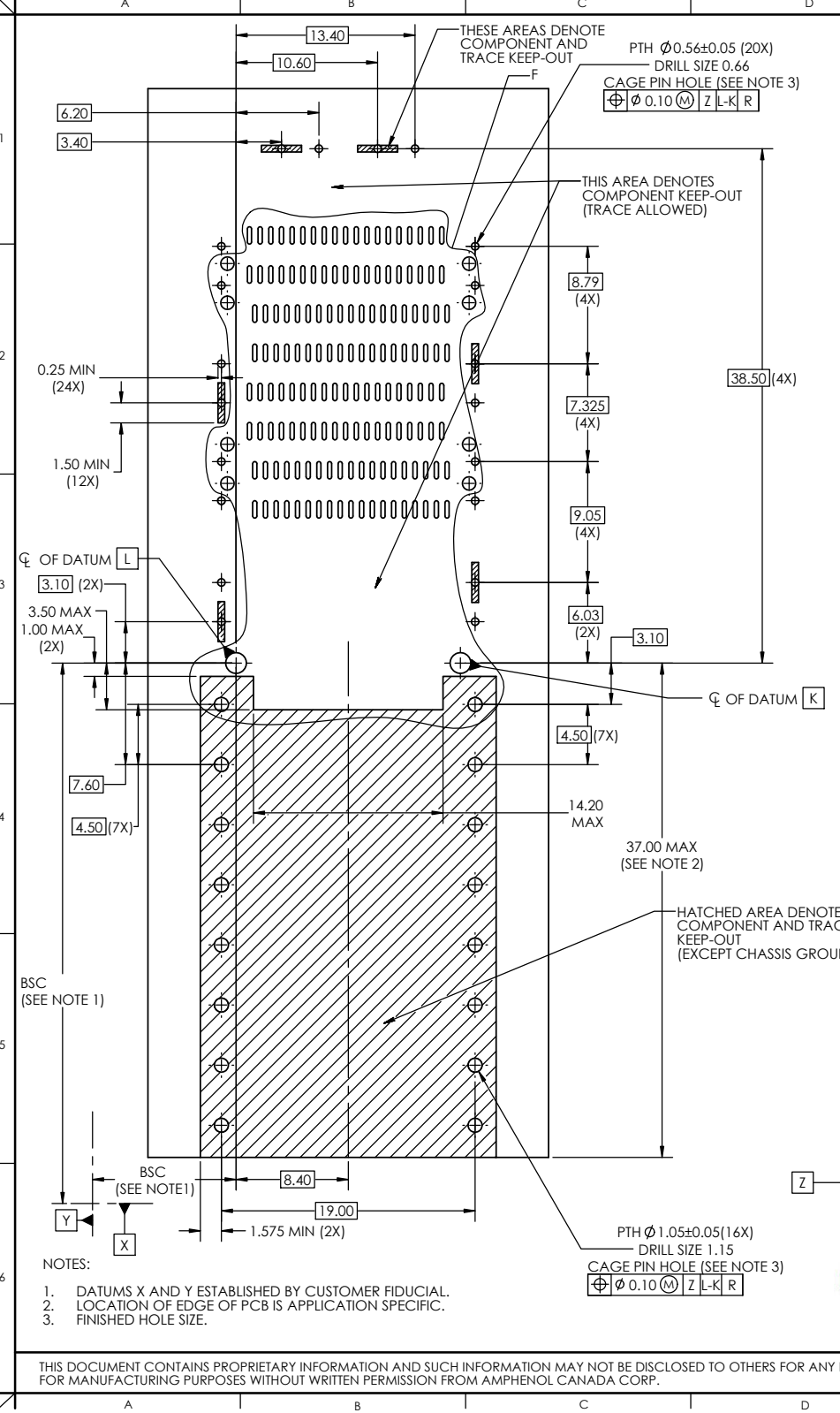
**QSFP-DD STACKED SMT  
112G RECEPTACLE CONNECTOR**

DWG. NO. **P-V36-BEZ01-XXXXXXX** REV **L**

CODE ID NO. 03554 DWG SIZE: C SCALE: 2:1 SHEET 3 OF 5







REVISIONS			
REV	DESCRIPTION, ECN, EAR NO.	DATE	APP'D
SEE SHEET 1			

- NOTES:
- DATUMS X AND Y ESTABLISHED BY CUSTOMER FIDUCIAL.
  - LOCATION OF EDGE OF PCB IS APPLICATION SPECIFIC.
  - FINISHED HOLE SIZE.



**RECOMMENDED PCB LAYOUT  
BELLY-TO-BELLY MOUNTING  
STANDARD FOOTPRINT**

UNLESS SPECIFIED OTHERWISE	DRAWN	KHALID H.	APR13/20
PRIMARY UNITS MILLIMETRES	CHECKED	CHRIS M.	APR28/20
SECONDARY INCHES	M.E. APPD		
REFERENCE IN PARENTHESES	Q.A. APPD		
GENERAL TOLERANCES	DWG APPD	ARKADY Z.	APR13/20
1 DECIMAL PLACE $\pm 0.25$	ENG. REL. NO.		
2 DECIMAL PLACES $\pm 0.15$	REF.		
ANGULAR DEGREES $\pm 2^\circ$	THIRD ANGLE PROJECTION		
	DO NOT SCALE DRAWING		

**Amphenol High Speed Interconnects**  
A Division of Amphenol Corp. [www.amphenolcanada.com](http://www.amphenolcanada.com)

**QSFP-DD STACKED SMT  
112G RECEPTACLE CONNECTOR**

DWG. NO. **P-V36-BEZ01-XXXXXXX** REV L

CODE ID NO. 03554 DWG SIZE: C SCALE: 2:1 SHEET 5 OF 5