

• ELECTRICAL CHARACTERISTICS

Contact Current Rating: 1 Amp
 Dielectric Withstanding Voltage: 500V AC
 Insulation Resistance: 500MΩ/Min
 Contact Resistance: 35mΩ/Max
 Operation Temperature: -55°C ~ +105°C

ITEM	DESC.	MATERIAL	REMARKS	PART REMARKS
4	COVER	PBT+G.F.30% (UL 94V-0)	COLOR:BLACK	
3	HOUSING	PBT+G.F.30% (UL 94V-0)	COLOR:BLACK	
2	SHELL	SPCC	PLATING:NI	
1	TERMINAL	C5191	CONTACT AREA: Au 5u" SOLDER AREA: Sn 100u" UNDER-PLATING: Ni 50u"	

QUALITY SYMBOLS

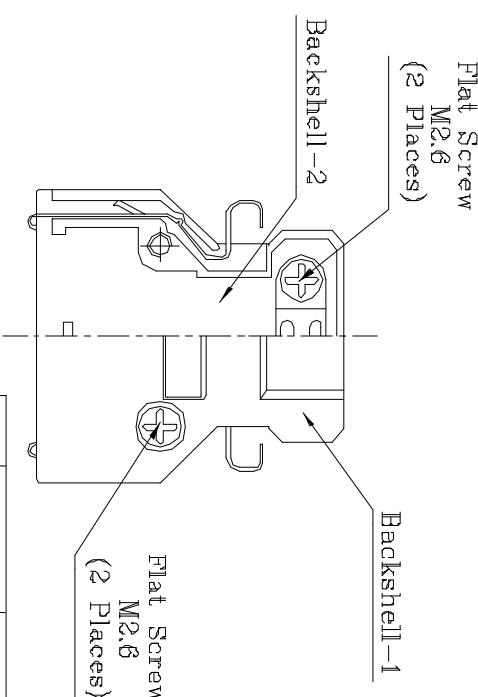
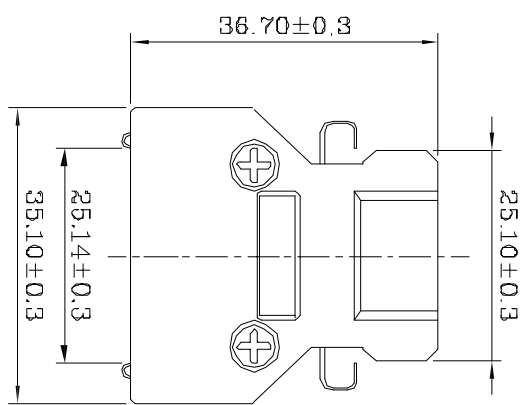
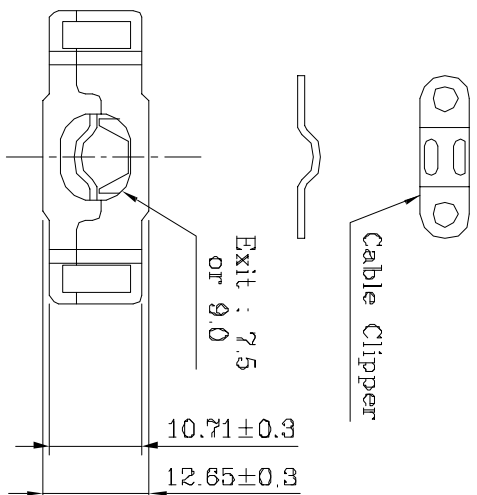
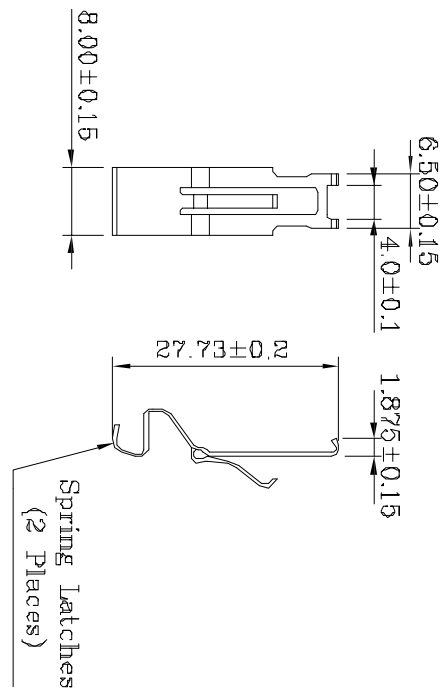
□ : MAJOR
 ▽ : CRITICAL
 S.P.C : ZERO DEFECT

Tolerance	NAME:	SCST 28P MALE SOLDER ASSEMBLY TYPE (客户用图)	PART NO.	B03-026311E0-01
X: ±0.50	REV:	G	CHK BY	APP BY
.X: ±0.30	SCALE:	N:1	DATE:	2021/07/05
.XX: ±0.15			DAWN HU	KING ZHOU

DATE	2021/07/05	新板发行
DESCRIPTION	DAWN HU	
APPROVER	DAWN HU	
SIDE	8	

东莞市箐国电子有限公司

DRAWING NO. B03-026



FEATURES:

- Round cable straight exit
- Strain Relief Staple With Spring Latches
- Back shell desing by Die-Cast
- Excellent EMI/RFI protection

PART NO:

B02-026NN8N3-XX

ENTRY HOLE SIZES:

- 70 = 7.5mm
- 90 = 9.0mm

ITEM	DESC.	MATERIAL	REMARKS	PART REMARKS
4	Clipper	Steel	Ni Plating	
3	Screw	Steel	Ni Plating	
2	Spring latch	Stainless Steel	Ni Plating	
1	Back Shell	ZINC	Ni Plating	

QUALITY SYMBOLS

- : CRITICAL
- ⊠ : MAJOR
- ▽ : ZERO DEFECT
- S.P.C :

Tolerance

- X. $\varnothing 0.50$
- X. $\varnothing 0.30$
- .xx ± 0.25

NAME: SCS1 26P ZINC Metal Hood With Latch

REV: A
 DATE: 2022/01/14
 SCALE: 1:1

PART NO. B02-026NN8N3-XX

DRW BY: KING ZHOU
 CHK BY: KING ZHOU
 APP BY: KING ZHOU
 DRAWING NO. B02-026

东莞市箐园电子有限公司

DATE	DESCRIPTION	APPROVER
2022/01/14 新版发行		King Zhou

8	7	6	5	4	3	2	1
---	---	---	---	---	---	---	---