

**CONDUCTIVE DUST COVER
SHOWN(OPTIONAL)
SHIPPED LOOSE
PN U90-1401-8000-BP**

**AMPHENOL PART NUMBER CONFIGURATION
UE36 - C16X X 1 -05 XX X**

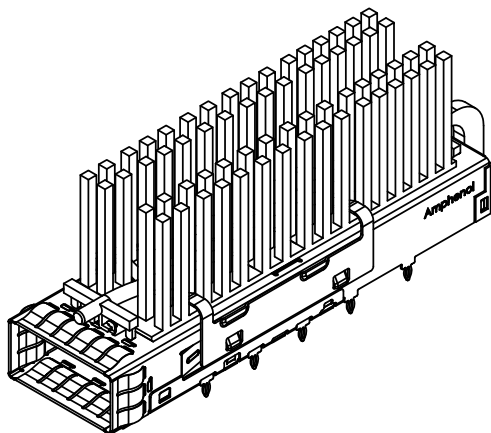
REAR PIN OPTION
2 = TWO REAR PIN
5 = ZERO REAR PIN
6 = ONE REAR PIN

LIGHT PIPE OPTION
0 = WITHOUT LIGHT PIPE
1 = SINGLE LIGHT PIPE
2 = DUAL LIGHT PIPE
4 = QUAD LIGHT PIPE
7 = SINGLE LIGHT PIPE ,CENTERED, WITH LTAVD
C = SINGLE LIGHT PIPE WITH COATING
E = DUAL LIGHT PIPE WITH COATING
F = QUAD LIGHT PIPE WITH COATING

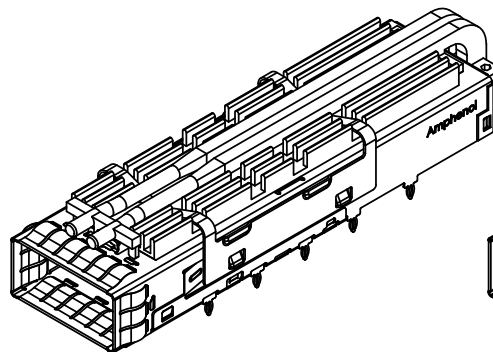
PACKAGING OPTION
1 = TRAY PACKAGING (HEAT SINK AND CLIP SHIPPED LOOSE)
2 = TRAY PACKAGING, WITH DUST COVER
A = TRAY PACKAGING (HEAT SINK AND CLIP SHIPPED ASSEMBLED)

HEAT SINK OPTION
00 = NO HEAT SINK, TOP OPENING
01 = NO HEAT SINK, WITH CLIP
A2 = WITH FIN PIN STYLE HEAT SINK (H=4.2MM; PCI HEIGHT)
A3 = WITH FIN PIN STYLE HEAT SINK (H=6.5MM; SAN HEIGHT)
A4 = WITH FIN PIN STYLE HEAT SINK (H=13.5MM; TALL HEIGHT)
A5 = WITH FIN PIN STYLE HEAT SINK (H=4.5MM; SPECIAL HEIGHT)
A6 = WITH FIN PIN STYLE HEAT SINK (H=21.5MM; SPECIAL HEIGHT)
A7 = WITH FIN PIN STYLE HEAT SINK (H=8.6MM; SPECIAL HEIGHT)
B2 = WITH SQUARE PIN STYLE HEAT SINK (H=4.2MM; PCI HEIGHT)
B3 = WITH SQUARE PIN STYLE HEAT SINK (H=6.5MM; SAN HEIGHT)
B4 = WITH SQUARE PIN STYLE HEAT SINK (H=13.5MM; TALL HEIGHT)
BF = WITH SQUARE PIN STYLE HEAT SINK (H=19.5MM; SPECIAL HEIGHT)
D6 = WITH FIN PIN STYLE HEAT SINK (H=21.5MM; SPECIAL HEIGHT, TOTAL 9 FINS)
D9 = WITH FIN PIN STYLE HEAT SINK (H=7.5MM; SPECIAL HEIGHT, TOTAL 9 FINS)

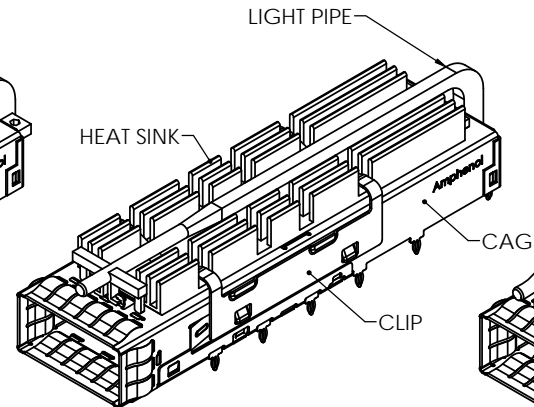
REVISONS			
REV	DESCRIPTION, ECN, EAR NO.	DATE	APP'D
A	INITIAL RELEASE	FEB.3, 21	A.Z
B	UPDATED THE PIN TREE AND THE PANEL FOR OPTION "7" LP	FEB.26, 21	A.Z



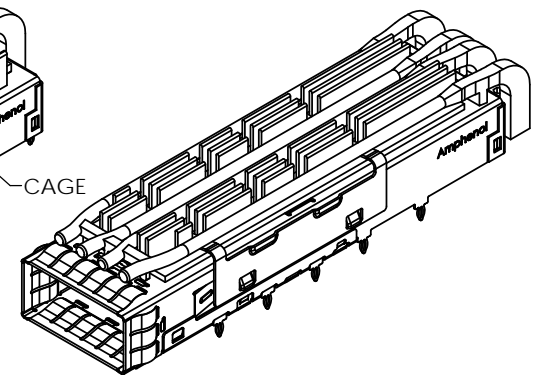
PN: UE36-C162(1,C)1-05BFA SHOWN



PN: UE36-C162(2,E)1-05A5A SHOWN



PN: UE36-C16671-05A3A SHOWN



PN: UE36-C162(4,F)1-05A3A SHOWN

NOTES:

- MATERIAL:**
CAGE: STAINLESS STEEL
HEAT SINK: NICKEL PLATED ALUMINUM ALLOY
HEAT SINK CLIP: STAINLESS STEEL
LIGHT PIPE: GE LEXAN RESIN, CLEAR OPTICAL GRADE
DUST COVER: CONDUCTIVE RUBBER



UNLESS SPECIFIED OTHERWISE		DRAWN	Peter.Z	FEB.3, 21
UNIT	MILLIMETERS	CHECKED	Chigow X	FEB.3, 21
REFERENCE IN PARENTHESES		M.E. APP'D		
GENERAL TOLERANCES		Q.A. APP'D		
1 DECIMAL PLACE	±0.25	DWG APP'D	Arkady Z	FEB.3, 21
2 DECIMAL PLACES	±0.15	ENG. REL. NO.	-	
ANGULAR DEGREES	±1°	REF.		
		THIRD ANGLE PROJECTION		DO NOT SCALE DRAWING

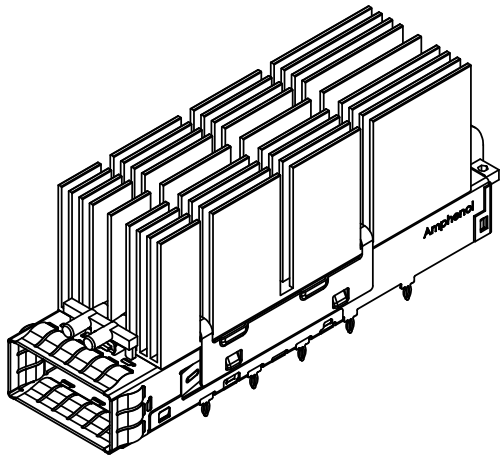
Amphenol High Speed Interconnects
A Division of Amphenol Corp. www.amphenol-highspeed.com

QSFP-DD 1X1 CAGE ASSEMBLY THROUGH THE BEZEL WITH HEAT SINK & LIGHT PIPE OPTION

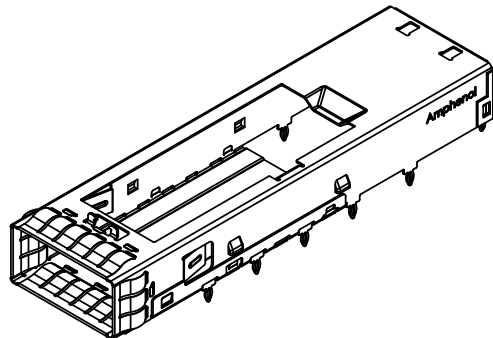
EMBOSES ON BOTTOM CAGE

DWG. NO. **P-UE36-C16XX1-05XXX** REV **B**

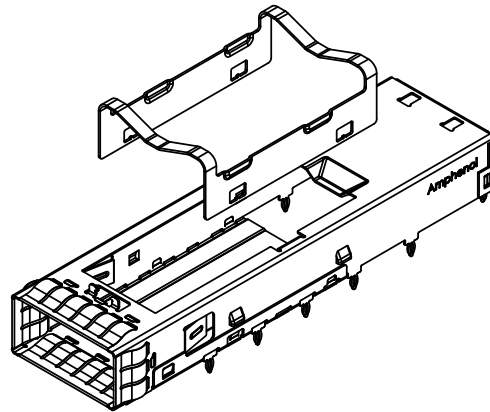
CODE ID. NO. **03554** DWG. SIZE: **C** SCALE: **1:1** SHEET **1** OF **8**



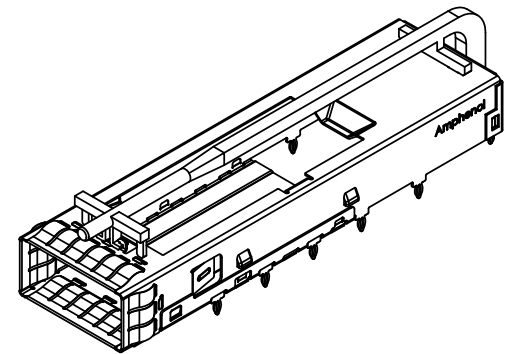
PN: UE36-C162(2,E)1-05D6A SHOWN



PN: UE36-C16601-05001 SHOWN



PN: UE36-C16601-05011 SHOWN



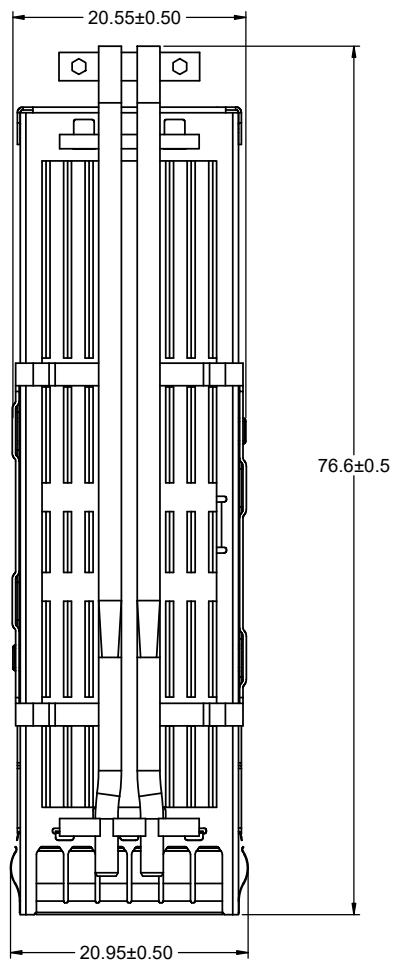
PN: UE36-C16671-0500A SHOWN



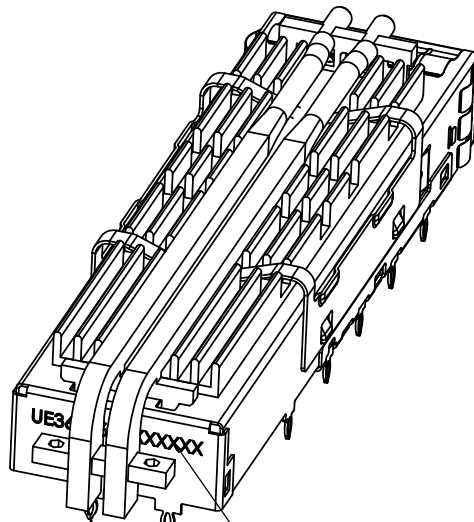
UNLESS SPECIFIED OTHERWISE		DRAWN	Peter.Z	FEB.3.21
UNIT	MILLIMETERS	CHECKED	Chigow X	FEB.3.21
REFERENCE IN PARENTHESES		M.E. APP'D		
		Q.A. APP'D		
GENERAL TOLERANCES		DWG. APP'D	Arkady Z	FEB.3.21
1 DECIMAL PLACE	±0.25	ENG. REL. NO.	-	
2 DECIMAL PLACES	±0.15	REF.		
ANGULAR DEGREES	±1°	THIRD ANGLE PROJECTION		DO NOT SCALE DRAWING

Amphenol High Speed Interconnects
 A Division of Amphenol Corp. www.amphenol-highspeed.com
 QSFP-DD 1X1 CAGE ASSEMBLY
 THROUGH THE BEZEL
 WITH HEAT SINK&LIGHT PIPE OPTION
 EMBOSSES ON BOTTOM CAGE

DWG. NO.	P-UE36-C16XX1-05XXX			REV	B
CODE ID. NO.	03554	DWG. SIZE:	C	SCALE:	1:1
		SHEET	2	OF	8

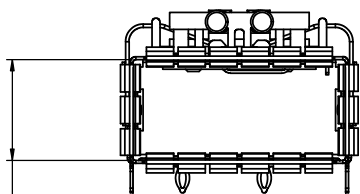


PN: UE36-C16221-05A5A SHOWN

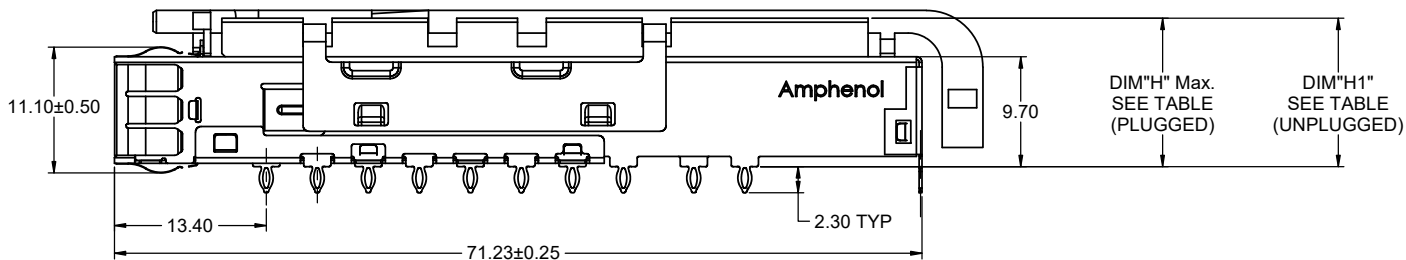


TWO REAR PIN
INK MARK PART NUMBER AND DATE CODE

PART NUMBER	DIM "H"	DIM "H1"
UE36C16XX105X2X	13.70MM	12.8MM
UE36C16XX105X3X	16.00MM	15.1MM
UE36C16XX105X4X	23.00MM	22.1MM
UE36C16XX105X5X	14.00MM	13.1MM
UE36C16XX105X6X	31.00MM	30.1MM
UE36C16XX105X7X	18.00MM	17.1MM
UE36C16XX105X9X	17.00MM	16.1MM
UE36C16XX105XFX	29.00MM	28.1MM



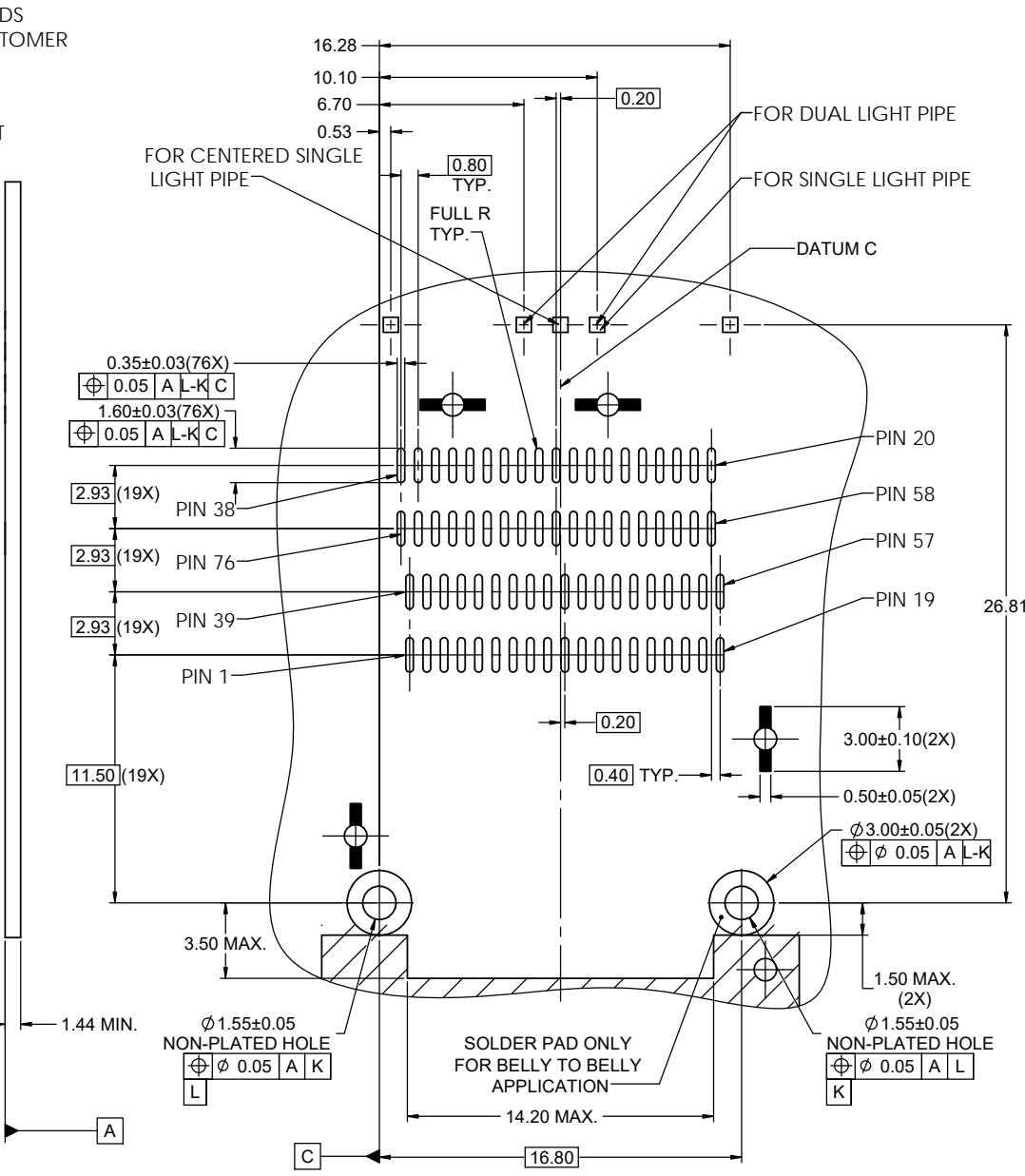
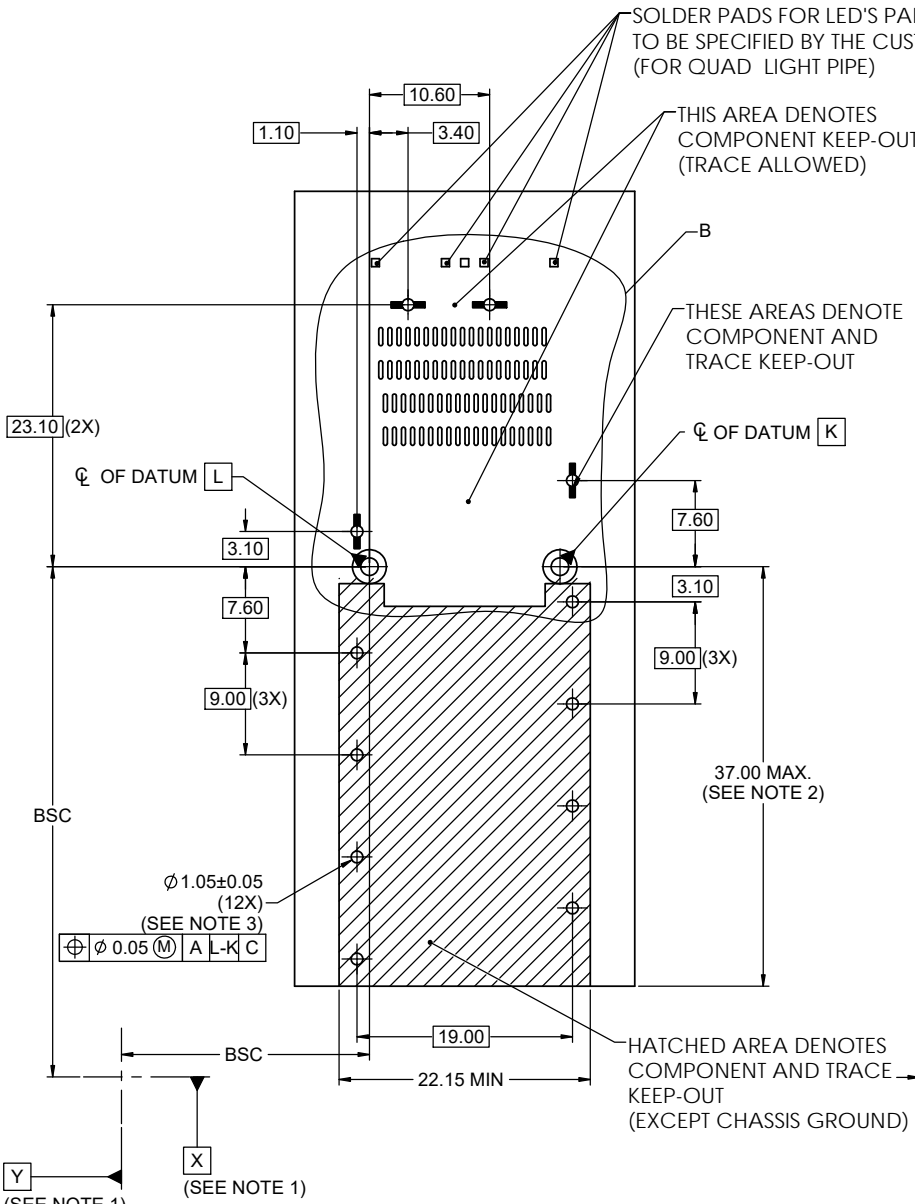
8.90 +0.20 / -0.10 (INSIDE TO INSIDE OF CAGE)
18.75±0.10 (INSIDE TO INSIDE OF CAGE)



UNLESS SPECIFIED OTHERWISE	DRAWN	Peter.Z	FEB.3, 21
UNIT	MILLIMETERS	CHECKED	Chigow X
REFERENCE IN PARENTHESES	M.E. APP'D	Q.A. APP'D	
GENERAL TOLERANCES	DWG. APP'D	Arkady Z	FEB.3, 21
1 DECIMAL PLACE	±0.25	ENG. REL. NO.	-
2 DECIMAL PLACES	±0.15	REF.	
ANGULAR DEGREES	±1°	THIRD ANGLE PROJECTION	DO NOT SCALE DRAWING

Amphenol High Speed Interconnects
A Division of Amphenol Corp. www.amphenol-highspeed.com
QSFP-DD 1X1 CAGE ASSEMBLY THROUGH THE BEZEL WITH HEAT SINK&LIGHT PIPE OPTION
EMBOSSES ON BOTTOM CAGE

DWG. NO.	P-UE36-C16XX1-05XXX	REV	B
CODE ID NO.	03554	DWG SIZE:	C
SCALE:	2:1	SHEET	3 OF 8



RECOMMENDED SINGLE SIDE MOUNTING DESIGN FOR TWO REAR PIN OPTIONS

DETAIL B SCALE 6 : 1

- NOTES:
- DATUMS X AND Y ESTABLISHED BY CUSTOMER'S FIDUCIAL.
 - LOCATION OF EDGE OF PCB IS APPLICATION SPECIFIC.
 - FINISHED HOLE SIZE.



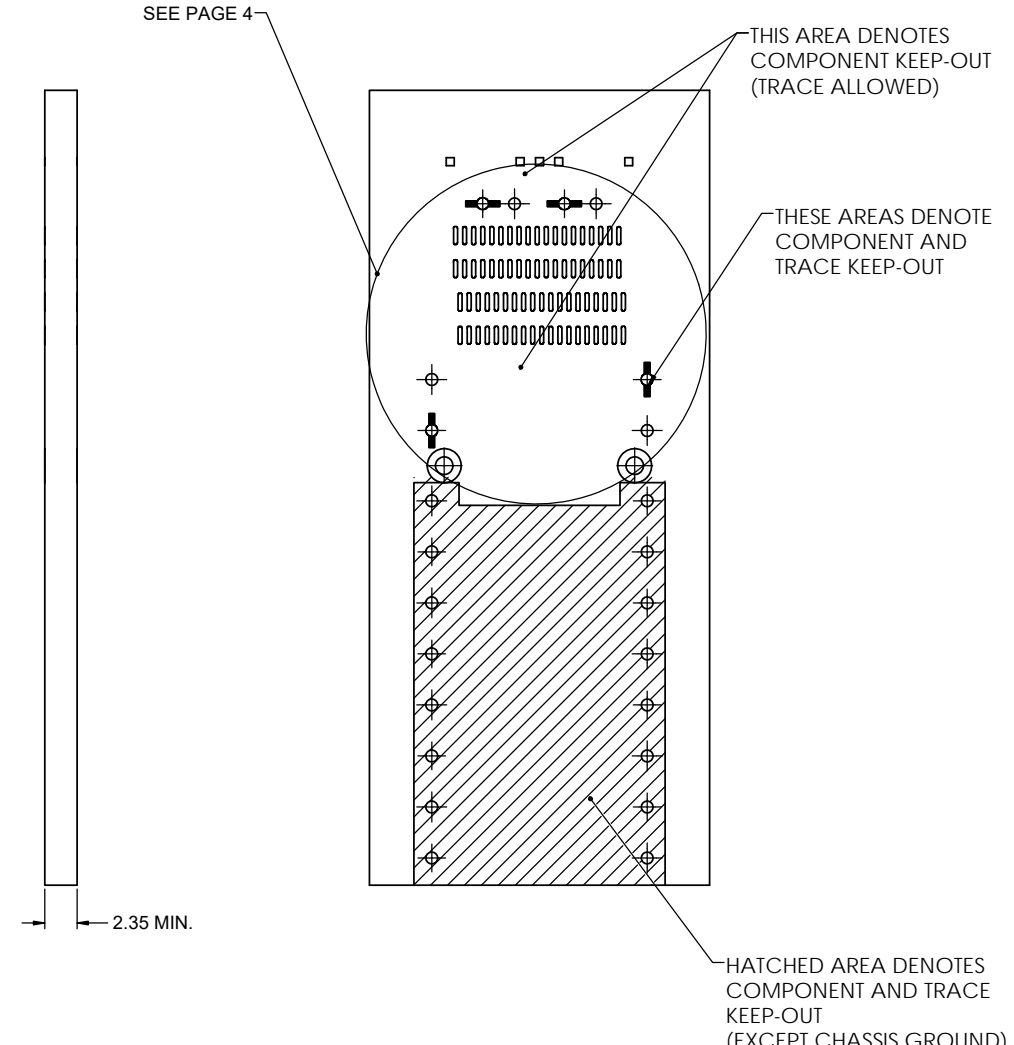
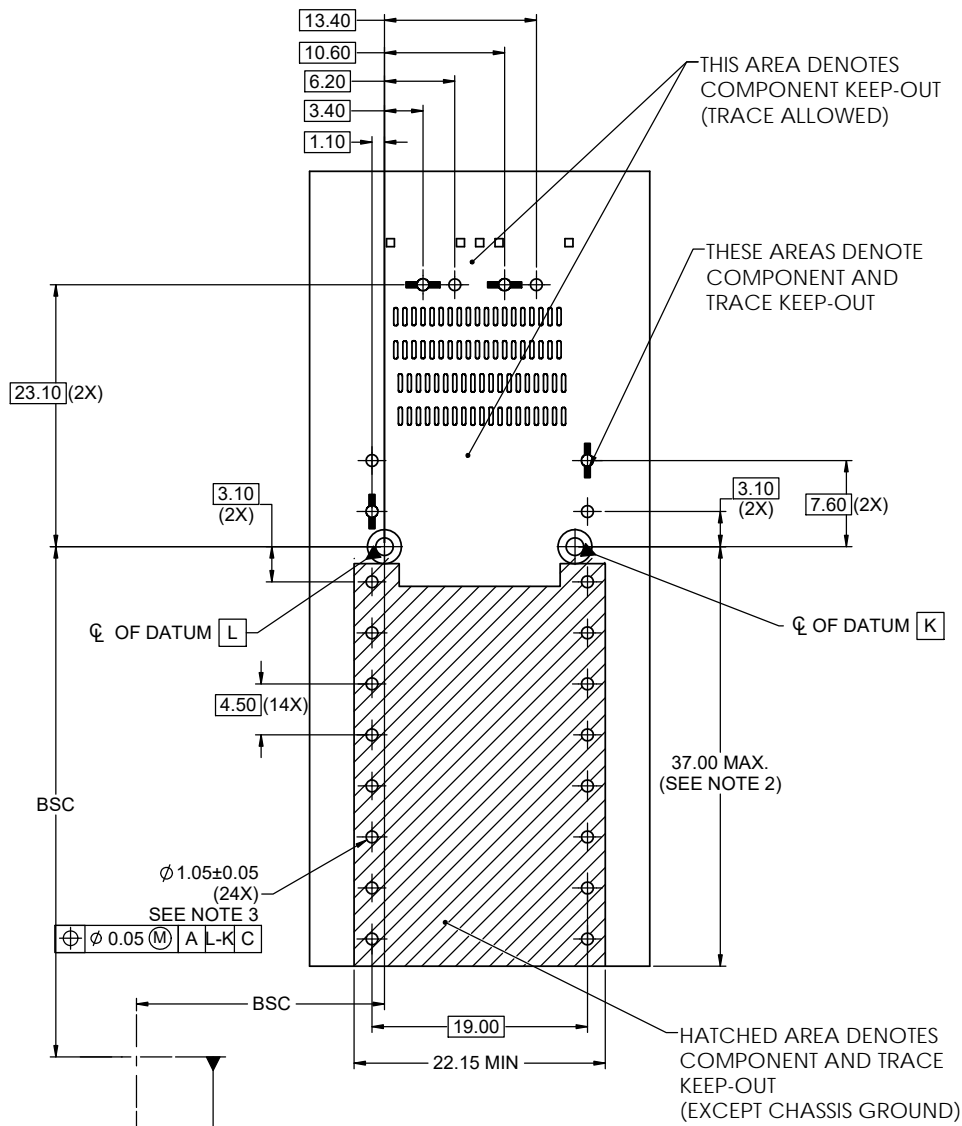
UNLESS SPECIFIED OTHERWISE		DRAWN	Peter.Z	FEB.3, 21
UNIT MILLIMETERS		CHECKED	Chigow X	FEB.3, 21
REFERENCE IN PARENTHESES		M.E. APP'D		
GENERAL TOLERANCES		Q.A. APP'D		
1 DECIMAL PLACE ±0.25		DWG APP'D	Arkady Z	FEB.3, 21
2 DECIMAL PLACES ±0.15		ENG. REL. NO.		
ANGULAR DEGREES ±1°		REF.		
		THIRD ANGLE PROJECTION		DO NOT SCALE DRAWING

Amphenol High Speed Interconnects
A Division of Amphenol Corp. www.amphenol-highspeed.com

QSFP-DD 1X1 CAGE ASSEMBLY THROUGH THE BEZEL WITH HEAT SINK&LIGHT PIPE OPTION EMBOSSES ON BOTTOM CAGE

DWG. NO. **P-UE36-C16XX1-05XXX** REV **B**

CODE ID. NO. 03554 DWG SIZE: C SCALE: 2:1 SHEET 4 OF 8



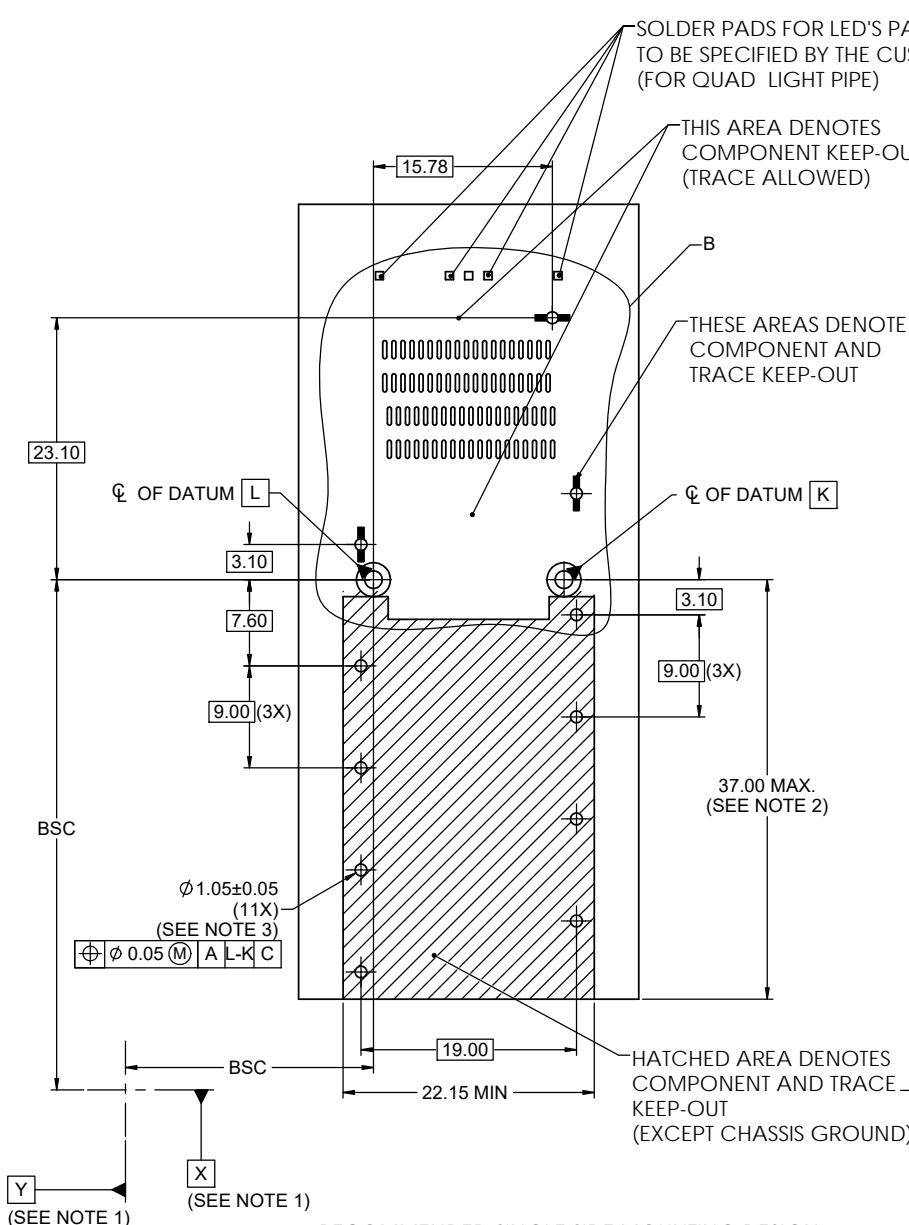
RECOMMENDED BELLY-TO-BELLY MOUNTING DESIGN FOR TWO REAR PIN OPTIONS

- NOTES:
- DATUMS X AND Y ESTABLISHED BY CUSTOMER'S FIDUCIAL.
 - LOCATION OF EDGE OF PCB IS APPLICATION SPECIFIC.
 - FINISHED HOLE SIZE.



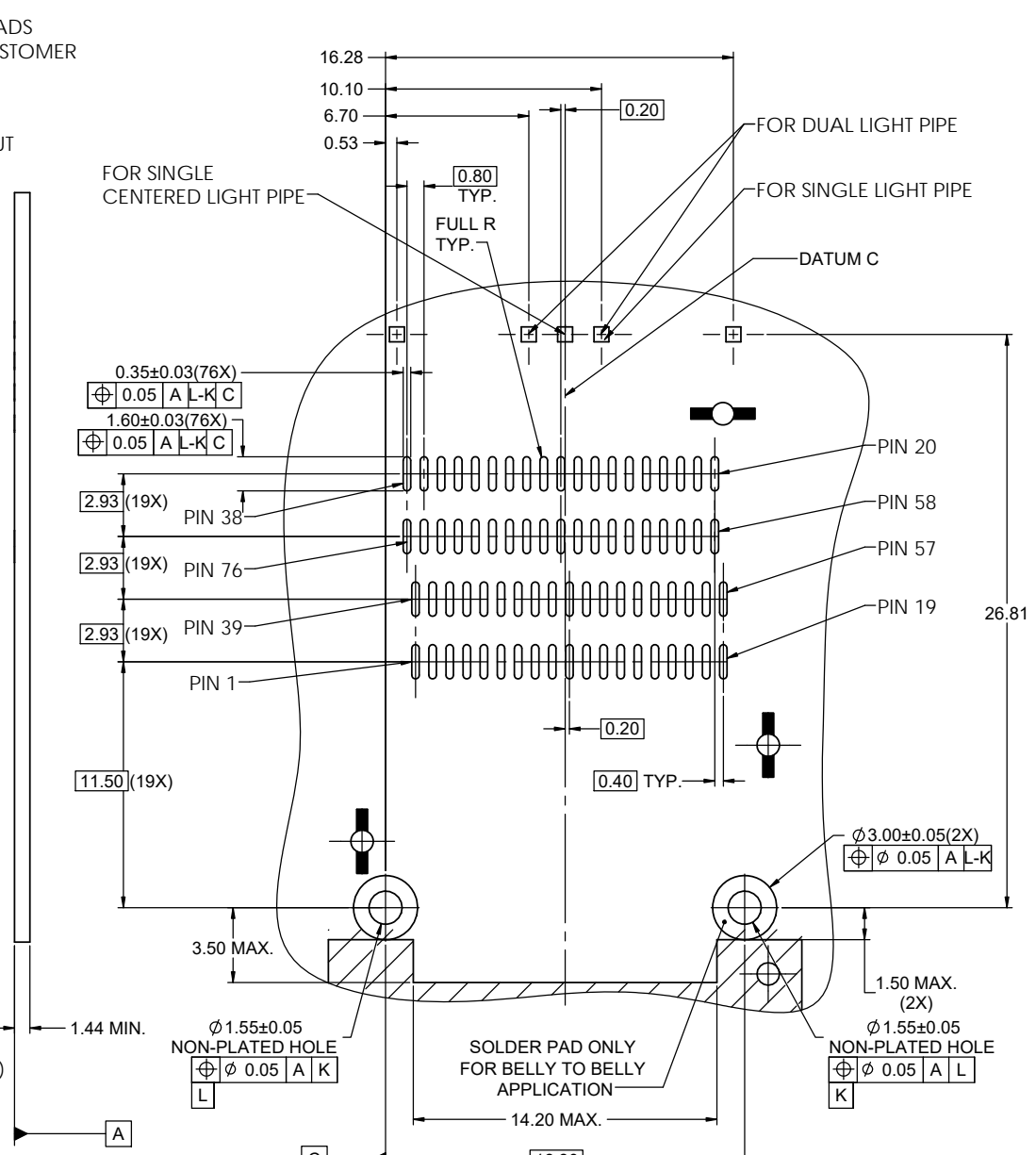
UNLESS SPECIFIED OTHERWISE		DRAWN	Peter Z	FEB.3.21
UNIT		CHECKED	Chigow X	FEB.3.21
MILLIMETERS		M.E. APP'D		
REFERENCE IN PARENTHESES		Q.A. APP'D		
GENERAL TOLERANCES		DWG. APP'D Arkady Z FEB.3.21		
1 DECIMAL PLACE		ENG. REL. NO. -		
2 DECIMAL PLACES		REF.		
ANGULAR DEGREES		THIRD ANGLE PROJECTION		
±1°		DO NOT SCALE DRAWING		

Amphenol High Speed Interconnects			
A Division of Amphenol Corp. www.amphenol-highspeed.com			
QSFP-DD 1X1 CAGE ASSEMBLY THROUGH THE BEZEL WITH HEAT SINK&LIGHT PIPE OPTION EMBOSSES ON BOTTOM CAGE			
DWG. NO.	P-UE36-C16XX1-05XXX		REV B
CODE ID NO.	03554	DWG SIZE: C	SCALE: 2:1 SHEET 5 OF 8



RECOMMENDED SINGLE SIDE MOUNTING DESIGN FOR ONE REAR PIN OPTIONS

- NOTES:
- DATUMS X AND Y ESTABLISHED BY CUSTOMER'S FIDUCIAL.
 - LOCATION OF EDGE OF PCB IS APPLICATION SPECIFIC.
 - FINISHED HOLE SIZE.



DETAIL B SCALE 6 : 1

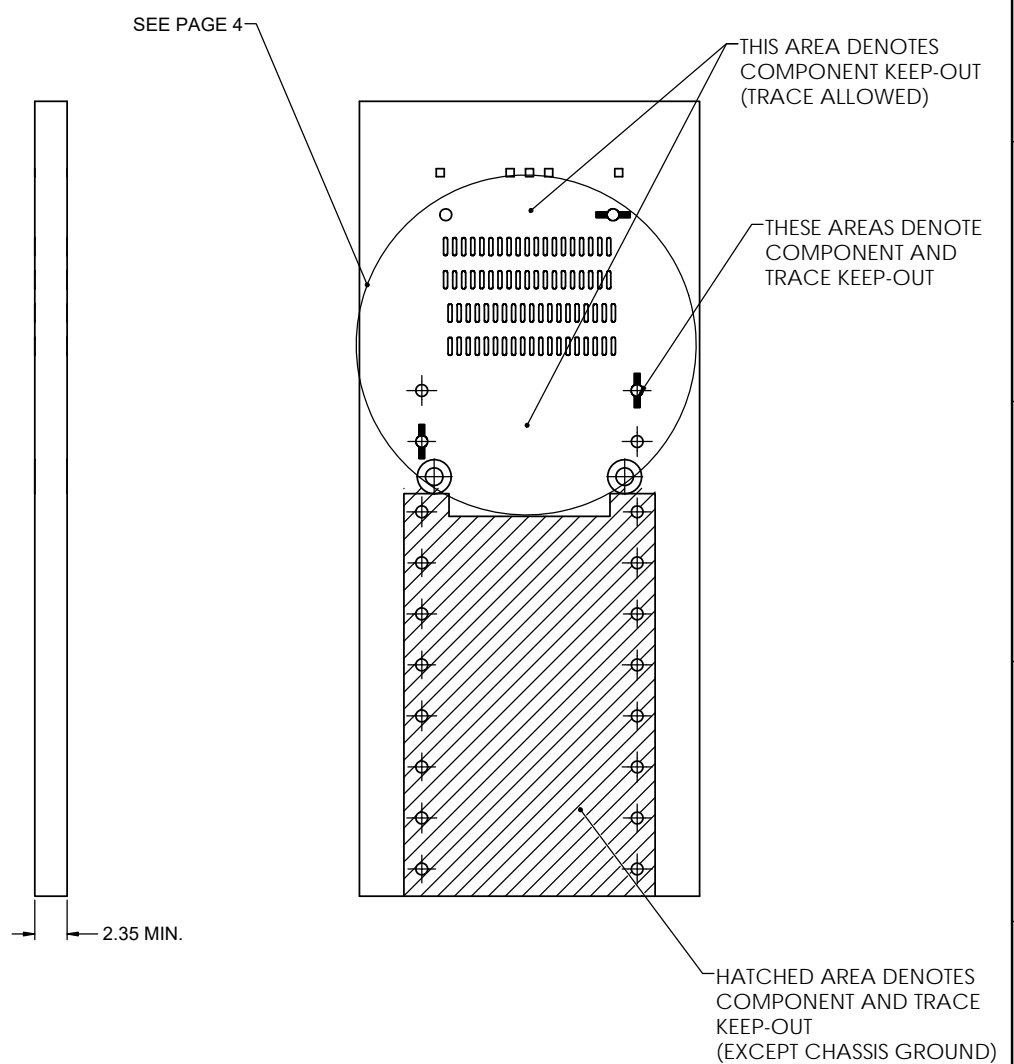
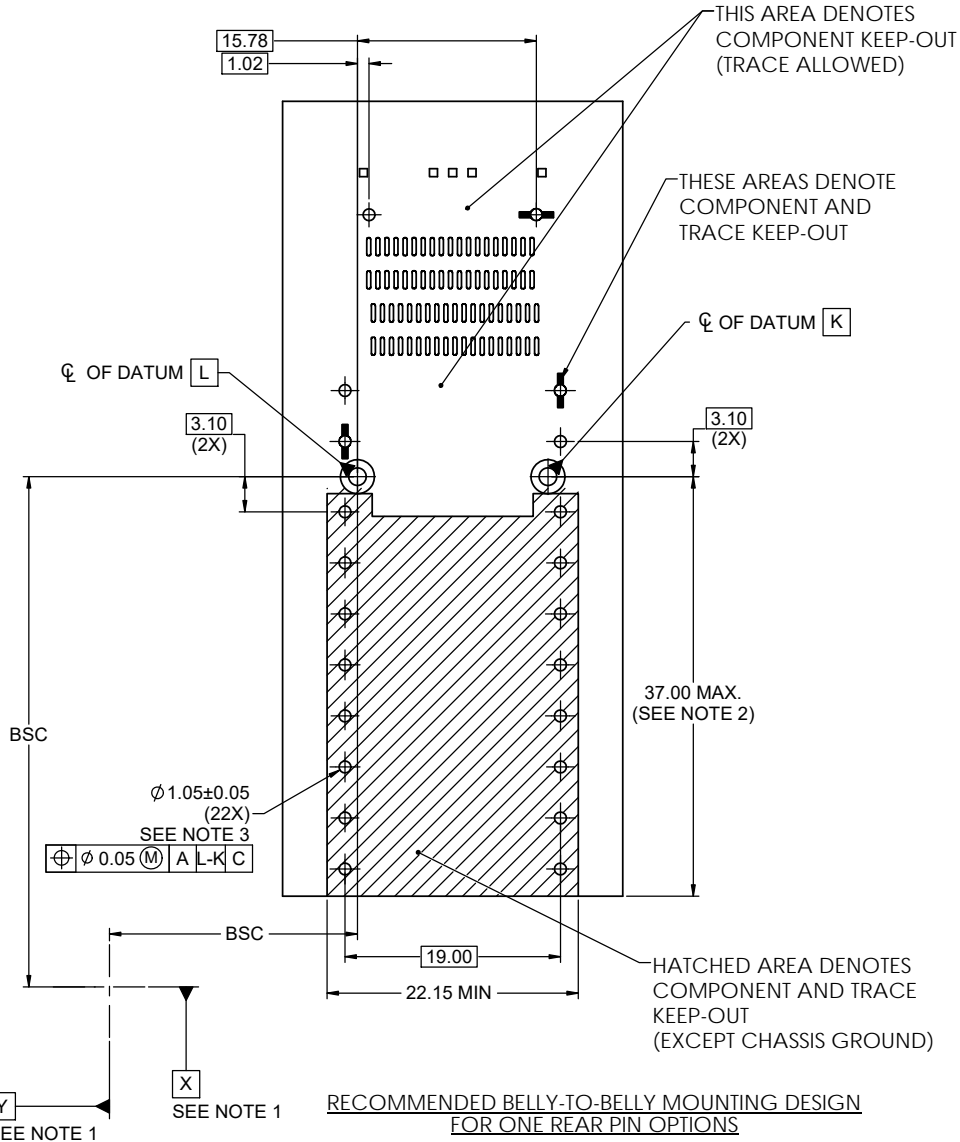


UNLESS SPECIFIED OTHERWISE		DRAWN	Peter.Z	FEB.3.21
UNIT		CHECKED	Chigow X	FEB.3.21
REFERENCE IN PARENTHESES		M.E. APP'D		
		Q.A. APP'D		
GENERAL TOLERANCES		DWG APP'D	Arkady Z	FEB.3.21
1 DECIMAL PLACE	±0.25	ENG. REL. NO.	-	
2 DECIMAL PLACES	±0.15	REF.		
ANGULAR DEGREES	±1°	THIRD ANGLE PROJECTION		DO NOT SCALE DRAWING

Amphenol High Speed Interconnects
 A Division of Amphenol Corp. www.amphenol-highspeed.com
QSFP-DD 1X1 CAGE ASSEMBLY THROUGH THE BEZEL WITH HEAT SINK&LIGHT PIPE OPTION EMBOSSES ON BOTTOM CAGE

DWG. NO. **P-UE36-C16XX1-05XXX** REV **B**

CODE ID NO. **03554** DWG SIZE: **C** SCALE: **2:1** SHEET **6** OF **8**



- NOTES:
- DATUMS X AND Y ESTABLISHED BY CUSTOMER'S FIDUCIAL.
 - LOCATION OF EDGE OF PCB IS APPLICATION SPECIFIC.
 - FINISHED HOLE SIZE.



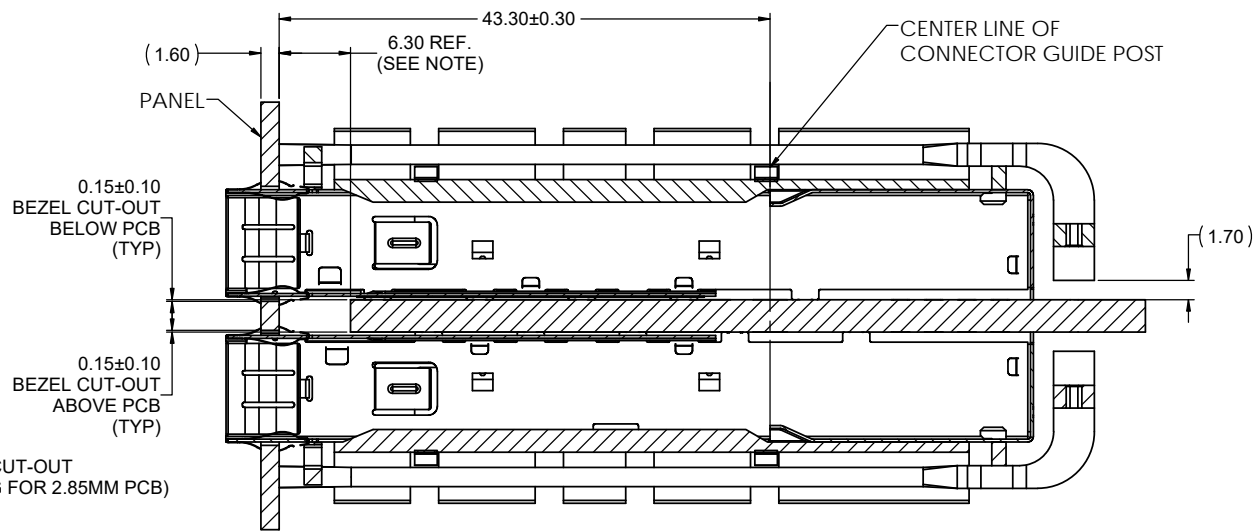
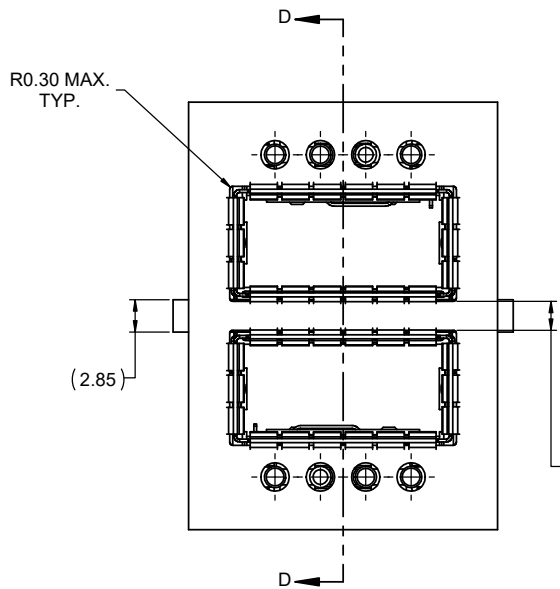
UNLESS SPECIFIED OTHERWISE		DRAWN	Peter Z	FEB.3, 21
UNIT	MILLIMETERS	CHECKED	Chigow X	FEB.3, 21
REFERENCE IN PARENTHESES		M.E. APP'D		
		Q.A. APP'D		
GENERAL TOLERANCES		DWG. APP'D	Arkady Z	FEB.3, 21
1 DECIMAL PLACE	±0.25	ENG. REL. NO.	-	
2 DECIMAL PLACES	±0.15	REF.		
ANGULAR DEGREES	±1°	THIRD ANGLE PROJECTION		DO NOT SCALE DRAWING

Amphenol High Speed Interconnects
 A Division of Amphenol Corp. www.amphenol-highspeed.com

QSFP-DD 1X1 CAGE ASSEMBLY THROUGH THE BEZEL WITH HEAT SINK&LIGHT PIPE OPTION EMBOSSES ON BOTTOM CAGE

DWG. NO. **P-UE36-C16XX1-05XXX** REV **B**

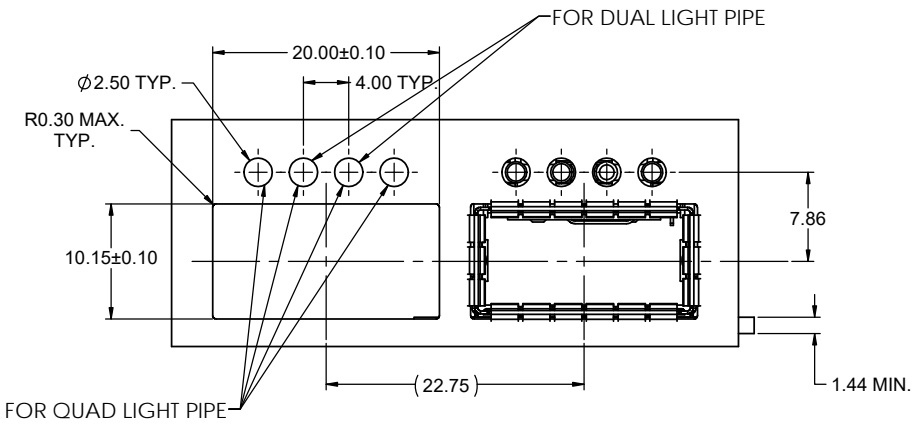
CODE ID NO. **03554** DWG SIZE: **C** SCALE: **2:1** SHEET **7** OF **8**



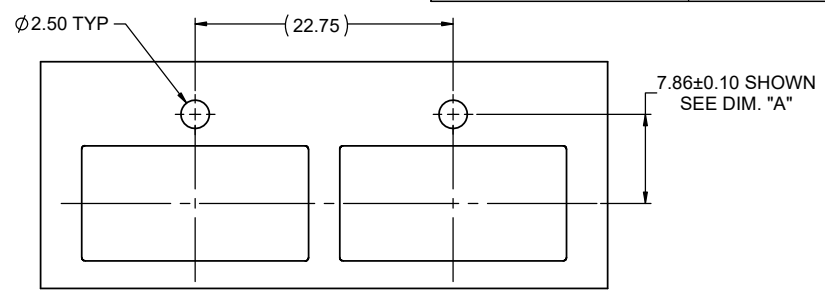
SECTION D-D
SCALE 3 : 1

RECOMMENDED BELLY-TO-BELLY MOUNTING DESIGN

PART NUMBER	DIM "A"
UE36C16X1105XXX	7.86MM
UE36C16X7105XXX	8.75MM



RECOMMENDED SINGLE SIDE MOUNTING DESIGN



RECOMMENDED SINGLE SIDE MOUNTING DESIGN
FOR SINGLE LIGHT PIPE

NOTES:
LOCATION OF EDGE OF PCB IS APPLICATION SPECIFIC.



UNLESS SPECIFIED OTHERWISE	DRAWN	Peter.Z	FEB.3.21
UNIT	CHECKED	Chigow X	FEB.3.21
REFERENCE IN PARENTHESES	M.E. APP'D		
	Q.A. APP'D		
GENERAL TOLERANCES	DWG. APP'D	Arkady Z	FEB.3.21
1 DECIMAL PLACE	ENG. REL. NO.	-	
2 DECIMAL PLACES	REF.		
ANGULAR DEGREES	THIRD ANGLE PROJECTION		
	DO NOT SCALE DRAWING		

Amphenol High Speed Interconnects
A Division of Amphenol Corp. www.amphenol-highspeed.com

QSFP-DD 1X1 CAGE ASSEMBLY THROUGH THE BEZEL WITH HEAT SINK&LIGHT PIPE OPTION EMBOSSES ON BOTTOM CAGE

DWG. NO.	P-UE36-C16XX1-05XXX	REV	B
CODE ID NO.	03554	DWG SIZE:	C
SCALE:	2:1	SHEET	8 OF 8