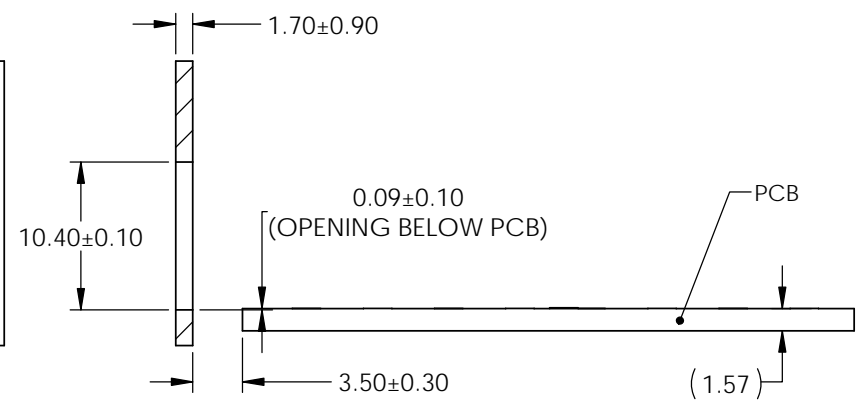
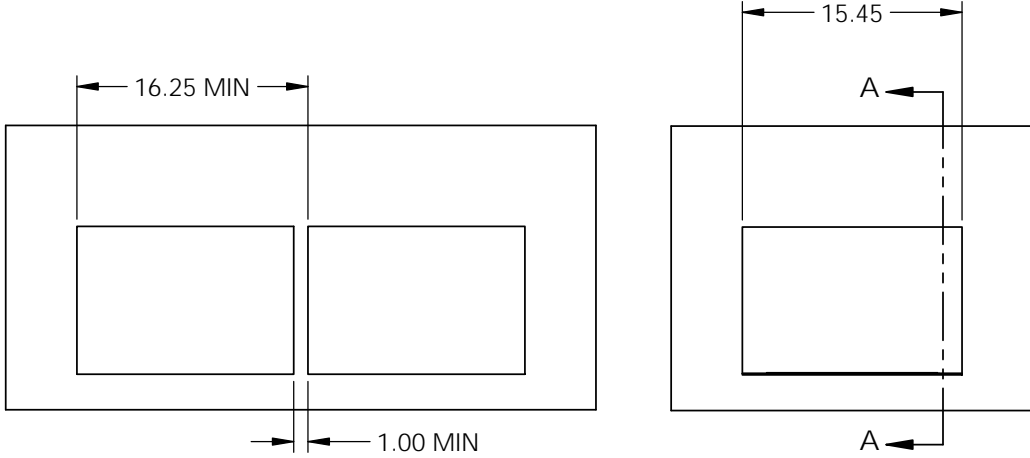


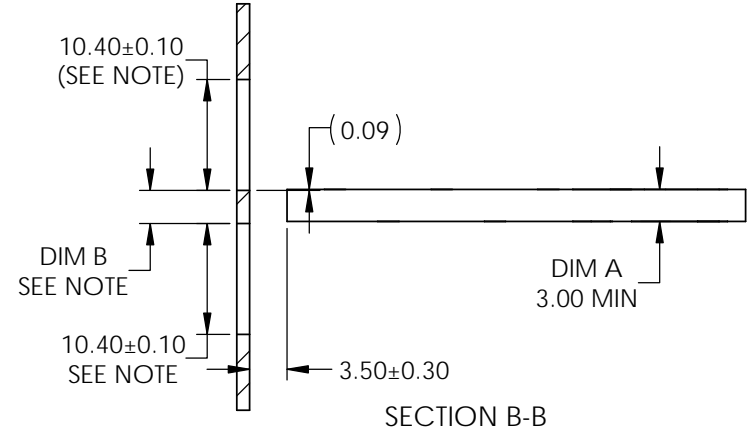
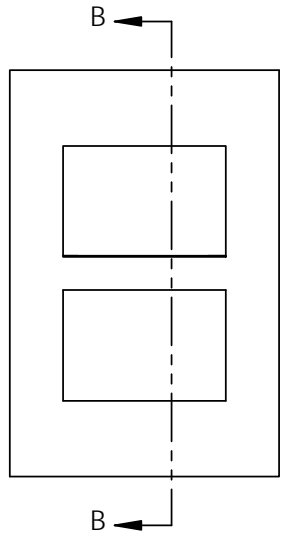
UNLESS SPECIFIED OTHERWISE	DRAWN	Mike.H	JUL 14/16
DIMENSIONS ARE IN MILLIMETERS	CHECKED	Chigow.X	JUL 14/16
REFERENCE IN PARENTHESES	M.E. APP'D		
GENERAL TOLERANCES	Q.A. APP'D		
1 DECIMAL PLACE ±0.25	DWG APP'D	J.SI	JUL 14/16
2 DECIMAL PLACE ±0.15	MATERIAL AND FINISH	SEE NOTES	
3 DECIMAL PLACE N/A	REF.		
ANGULAR DEGREES ±1°	THIRD ANGLE PROJECTION		
ENG. REL. NO.	DO NOT SCALE DRAWING		

Amphenol High Speed Interconnects A Division of Amphenol Corp. www.amphenolcanada.com			
1X1 SFP ULTRAPORT CAGE, SPRING FINGER			
DWG. NO.	P-U77-3GA161L-X071		REV A
CODE ID NO.	03554	DWG SIZE: A4	SCALE: 3:1 SHEET 1 OF 4

REVISIONS				
REV.	ECN	DESCRIPTION	DATE	APPROVED
A		INITIAL RELEASE	JUL 14/16	J.SI



**RECOMMENDED BEZEL DESIGN
(SINGLE SIDE CAGE MOUNT)**



NOTE:
 PANEL CUTOUT SIZES PER SFF 8433 SPEC. FOR BELLY TO BELLY MOUNTING, DIM "A" (PCB THICKNESS) IS 3.0 mm MIN. DIM "B" RELATED TO DIM "A". FOR DIM "B" = DIM "A" - 0.80 mm. THE PANEL CUTOUT 10.40 mm MIGHT BE INCREASED UP TO 10.80 mm IN ORDER TO ACCOMMODATE PCB TOLERANCE.

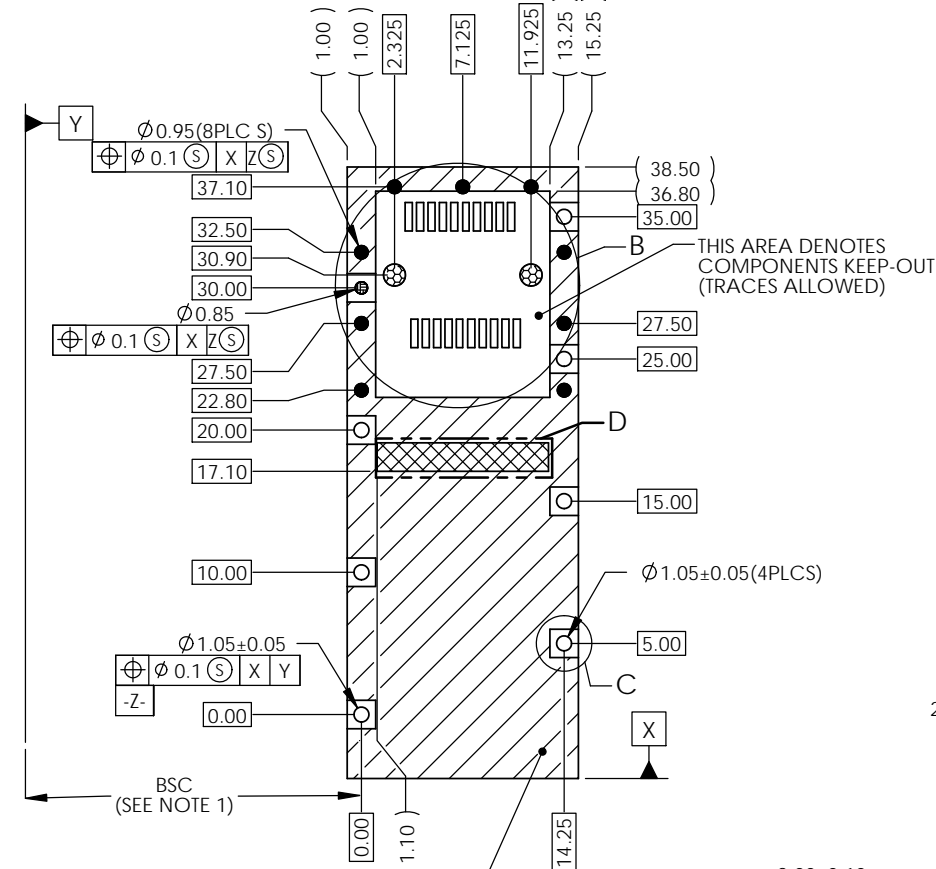
THIS DOCUMENT CONTAINS PROPRIETARY INFORMATION AND SUCH INFORMATION MAY NOT BE DISCLOSED TO OTHERS FOR ANY PURPOSE OR USED FOR MANUFACTURING PURPOSES WITHOUT WRITTEN PERMISSION FROM AMPHENOL CANADA CORP.

UNLESS SPECIFIED OTHERWISE	DRAWN	Mike.H	JUL 14/16	Amphenol High Speed Interconnects A Division of Amphenol Corp. www.amphenolcanada.com			
DIMENSIONS ARE IN MILLIMETERS	CHECKED	Chigow.X	JUL 14/16				
REFERENCE IN PARENTHESES	M.E. APP'D						
GENERAL TOLERANCES	Q.A. APP'D						
1 DECIMAL PLACE ±0.25	DWG APP'D	J.SI	JUL 14/16	1X1 SFP ULTRAPORT CAGE, SPRING FINGER			
2 DECIMAL PLACE ±0.15	MATERIAL AND FINISH	SEE NOTES					
3 DECIMAL PLACE N/A	REF.			DWG. NO.	P-U77-3GA161L-X071	REV	A
ANGULAR DEGREES ±1°	THIRD ANGLE PROJECTION			CODE ID NO.	03554	DWG SIZE:	A4
ENG. REL. NO.				SCALE:	2:1	SHEET 2 OF 4	

- NOTES:
 1. DATUM AND BASIC DIMENSIONS ESTABLISHED BY CUSTOMER
 2. PADS AND VIAS ARE CHASSISGROUND.
 3. THRU-HOLES, PLATING OPTIONAL.
 4. SEE DRAWINGS P-UJ76-3GA20-X600T FOR CONNECTOR LAYOUT.

- HOLE SIZES
 ⊕ = $\varnothing 1.55$
 ○ = $\varnothing 1.05$
 ● = $\varnothing 0.95$
 ⊕ = $\varnothing 0.85$

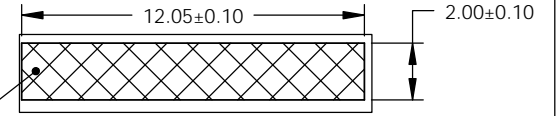
REVISIONS				
REV.	ECN	DESCRIPTION	DATE	APPROVED
A		INITIAL RELEASE	JUL 14/16	J.SI



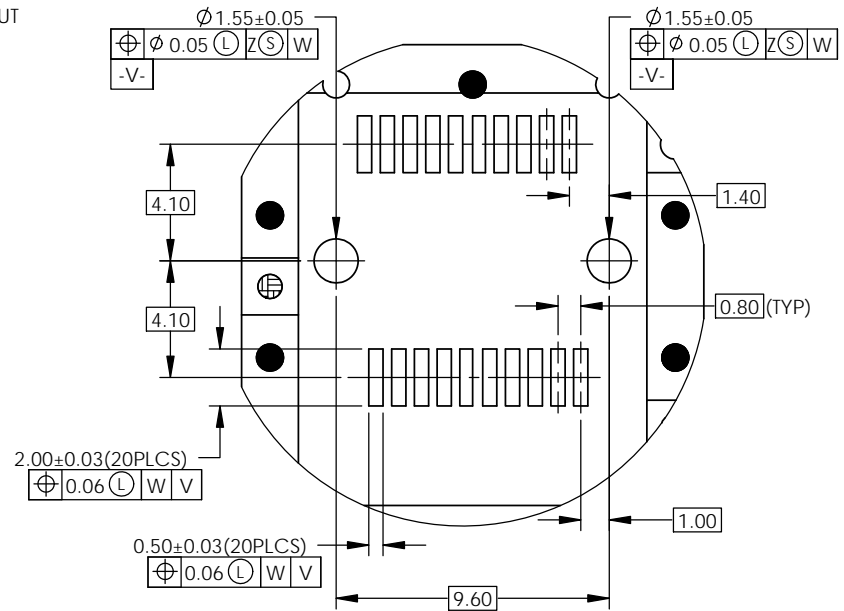
CROSS-HATCHED AREA DENOTES COMPONENT AND TRACE KEEP-OUT (EXCEPT CHASSIS GROUND)

RECOMMENDED PCB DESIGN FOR SINGLE SIDE MOUNTING

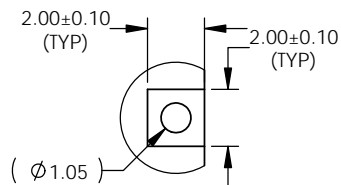
MINIMUM CONTACT AREA FOR SPRING FINGERS (NO SOLDER MASK)



DETAIL D
SCALE 4 : 1



DETAIL B
SCALE 4 : 1



DETAIL C
SCALE 4 : 1

THIS DOCUMENT CONTAINS PROPRIETARY INFORMATION AND SUCH INFORMATION MAY NOT BE DISCLOSED TO OTHERS FOR ANY PURPOSE OR USED FOR MANUFACTURING PURPOSES WITHOUT WRITTEN PERMISSION FROM AMPHENOL CANADA CORP.

UNLESS SPECIFIED OTHERWISE	DRAWN	Mike.H	JUL 14/16
DIMENSIONS ARE IN MILLIMETERS	CHECKED	Chigow.X	JUL 14/16
REFERENCE IN PARENTHESES	M.E. APP'D		
GENERAL TOLERANCES	Q.A. APP'D		
1 DECIMAL PLACE ±0.25	DWG APP'D	J.SI	JUL 14/16
2 DECIMAL PLACE ±0.15	MATERIAL AND FINISH	SEE NOTES	
3 DECIMAL PLACE N/A	REF.		
ANGULAR DEGREES ±1°	THIRD ANGLE PROJECTION		
ENG. REL. NO.	DO NOT SCALE DRAWING		

Amphenol High Speed Interconnects
 A Division of Amphenol Corp. www.amphenolcanada.com

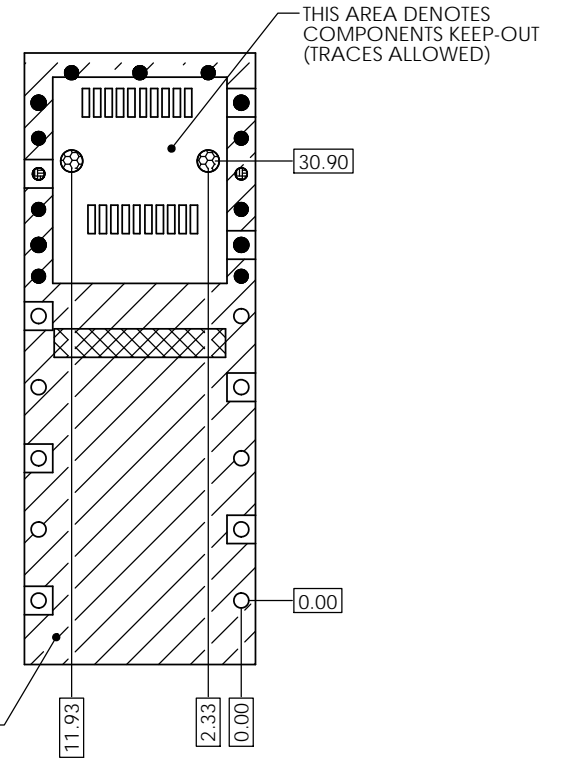
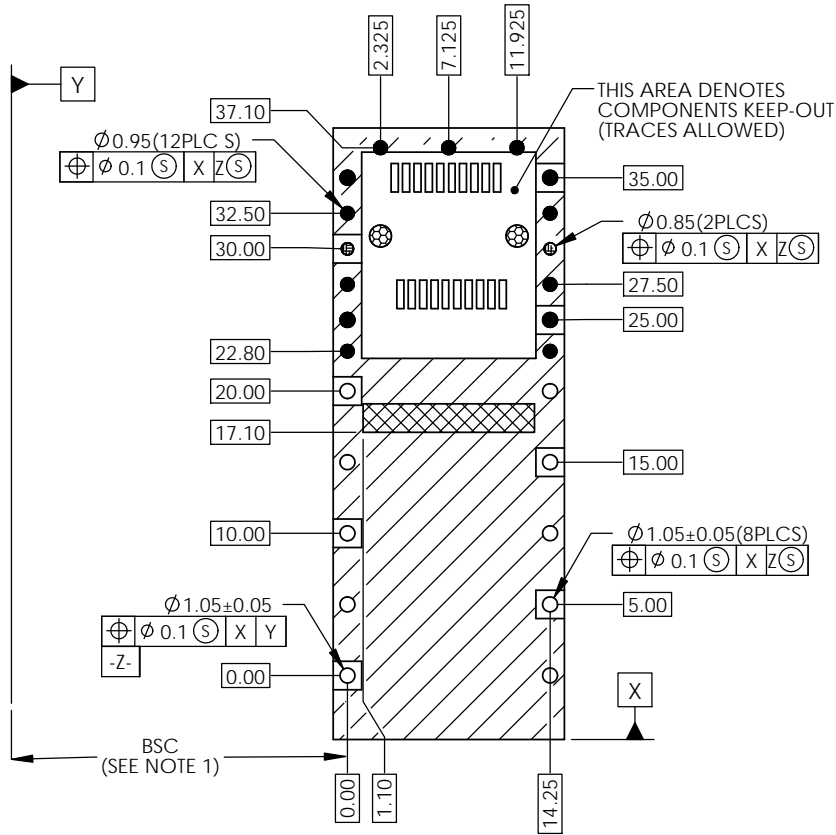
1X1 SFP ULTRAPORT CAGE, SPRING FINGER

DWG. NO.	P-U77-3GA161L-X071	REV	A
CODE ID NO.	03554	DWG SIZE:	A4
SCALE:	3:1	SHEET	3 OF 4

- NOTES:
 1. DATUM AND BASIC DIMENSIONS ESTABLISHED BY CUSTOMER
 2. PADS AND VIAS ARE CHASSISGROUND.
 3. THRU-HOLES, PLATING OPTIONAL.
 4. SEE DRAWINGS P-UE76-3GA20-X600T FOR CONNECTOR LAYOUT.

- HOLE SIZES
 ⊕ = $\varnothing 1.55$
 ○ = $\varnothing 1.05$
 ● = $\varnothing 0.95$
 ⊕ = $\varnothing 0.85$

REVISIONS				
REV.	ECN	DESCRIPTION	DATE	APPROVED
A		INITIAL RELEASE	JUL 14/16	J.SI



RECOMMENDED PCB DESIGN FOR BELLY TO BELLY MOUNTING

THIS DOCUMENT CONTAINS PROPRIETARY INFORMATION AND SUCH INFORMATION MAY NOT BE DISCLOSED TO OTHERS FOR ANY PURPOSE OR USED FOR MANUFACTURING PURPOSES WITHOUT WRITTEN PERMISSION FROM AMPHENOL CANADA CORP.

UNLESS SPECIFIED OTHERWISE	DRAWN	Mike.H	JUL 14/16
DIMENSIONS ARE IN MILLIMETERS	CHECKED	Chigow.X	JUL 14/16
REFERENCE IN PARENTHESES	M.E. APP'D		
GENERAL TOLERANCES	Q.A. APP'D		
1 DECIMAL PLACE ± 0.25	DWG APP'D	J.SI	JUL 14/16
2 DECIMAL PLACE ± 0.15	MATERIAL AND FINISH	SEE NOTES	
3 DECIMAL PLACE N/A	REF.		
ANGULAR DEGREES $\pm 1^\circ$	THIRD ANGLE PROJECTION		
ENG. REL. NO.	DO NOT SCALE DRAWING		

Amphenol High Speed Interconnects
 A Division of Amphenol Corp. www.amphenolcanada.com

1X1 SFP ULTRAPORT CAGE, SPRING FINGER

DWG. NO.	P-U77-3GA161L-X071	REV	A
CODE ID NO.	03554	DWG SIZE:	A4
SCALE:	3:1	SHEET	4 OF 4