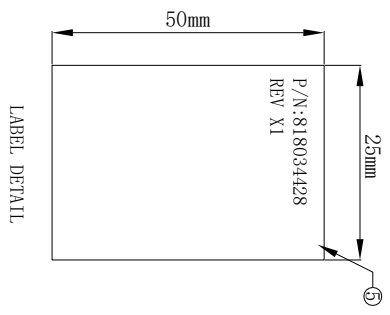
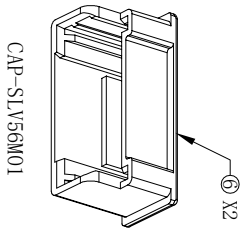
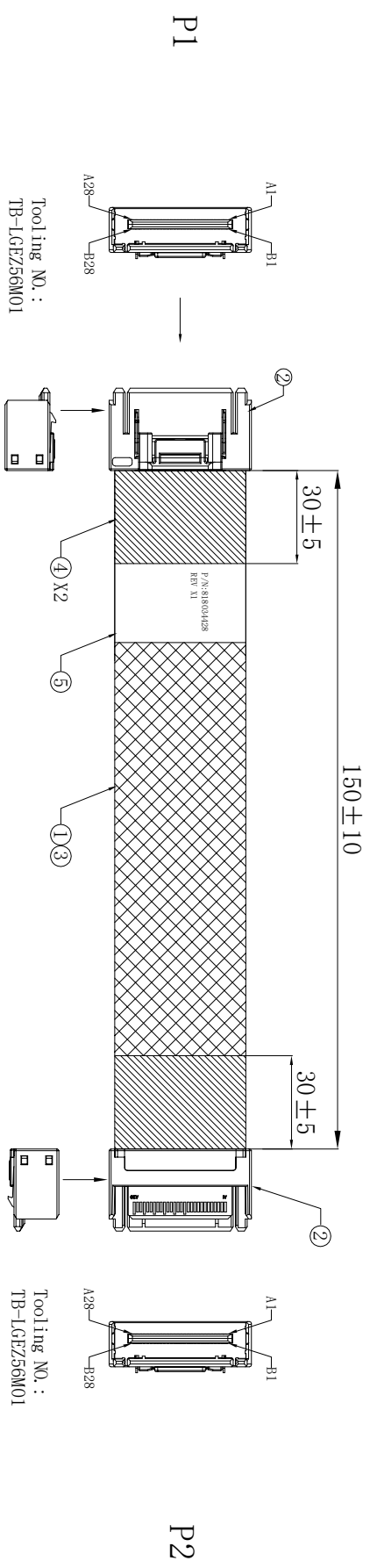


| REV. | ECN NUMBER | DESCRIPTION | DATE | DRAWN | CHECK | APPROVE |
|------|------------|-----------------|----------|------------|------------|-----------|
| X1 | | INITIAL RELEASE | 05/12'22 | Linyong_Li | Linyong_Li | Aaron_Cai |

- NOTES:
1. THE CABLE ASSEMBLY SHALL BE MEET RoHS2.0 COMPLIANT.
该产品通过RoHS2.0认证。
 2. 接触区域特性阻抗: 85±10% ohm; Cable区域特性阻抗: 85±10% ohm.
 3. ELECTRICAL AND MECHANICAL PERFORMANCE SHALL MEET PCIe GEN4 SPECIFICATION.
电气性能满足PCIe GEN4规范。



| ITEM | P/N | DESCRIPTION | QTY | UNIT |
|------|------------|--|-----|------|
| 6 | 602010105 | LOW DENSITY PE G4PC0, D04F4, NATURA, R2 | A/R | KG |
| 5 | 604100070 | LABEL: PVC, 25*50mm, WHITE, W-1, ROHS | 2 | pcs |
| 4 | 605011152 | POLYESTER TAPE: T=0.12mm, W=30mm, BLACK, HF | A/R | mm |
| 3 | 605040426 | EXPANDO TUBE: OD=8mm, BLACK, W-1, HF | A/R | mm |
| 2 | 74151XXXXX | GNZ 1C 85Ω STR | 2 | pcs |
| 1 | 603010210 | SAS CBL.: UJ20744.32#*2C+2EAM, TINNED, FRP, 85Ω, VW-1, BLUE, HF, 24G | A/R | mm |

GENERAL TOLERANCE: XX.° ± 2°, X.° ± 1°, .X ± 0.5, .XX ± 0.25

SCALE: See Drawing

DRAWN: Linyong_Li

CHECK: APPROVE:

DATE: 05/12'2022

ROHS

PART. NO.: 8180XXXXX

TITLE: GNZ 1C STR TO GNZ 1C STR 150MM

REV. X1

SHEET: 1/2

东莞市箐围电子有限公司

