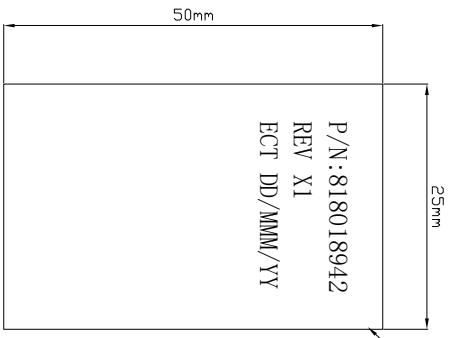


Tooling NO. :
TB-SLM38M01
TA-SLM38M01

P/N: 818018942
REV X1
ECT DD/MM/YY



LABEL DETAIL

ITEM	P/N	DESCRIPTION	QTY	UNIT
5	604100070	LABEL: PVC, 25*50mm, WHITE, W-1, RCHS	1	PCS
4	605040426	EXPANDO TUBE: OD=8.0mm, BLACK, W-1, HF	A/R	MM
3	605011152	Polyster tape: T=0.12mm, W=30mm, BLACK, RCHS	A/R	MM
2	7417075001	SLIMSAS 41 85 Ω STR	2	PCS
1	608010116	SAS: UL20744, 30AWG*2C+2E+AM, 85 Ω, 12G, HF	A/R	MM

QUALITY SYMBOLS

□ :
CRITICAL
MAJOR

▽ :
ZERO DEFECT S.P.C

Tolerance

x. ±0.50
.x ±0.30
.xx ±0.15



NAME: SLMS 4X CABLE P3

REV: A
SCALE: N:1

UNIT: mm
DATE: 2020/07/16

PART NO. 818018942

DRW BY: DAW NHU
CHK BY: KING ZHOU

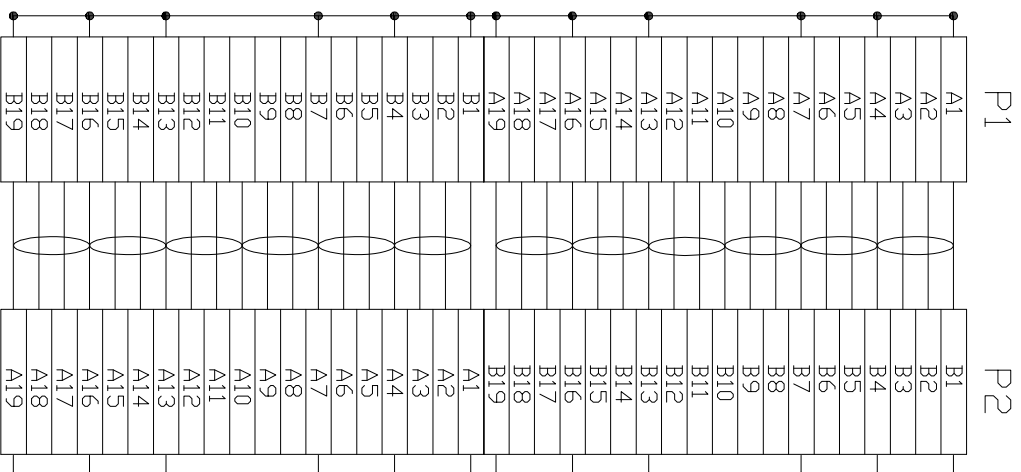
APP BY: KING ZHOU
DRAWING NO.

东莞市箐国电子有限公司

△					
△	2021/07/29	新版发行	King Zhou		
△	DATE	DESCRIPTION	APPROVER		

8	7	6	5	4	3	2	1
---	---	---	---	---	---	---	---

- NOTES:
- ELECTRICAL AND MECHANICAL PERFORMANCE SHOULD MEET THE SXS3.0 INDUSTRIAL STANDARD.
电气和机械特性满足PCTE3.0工业标准.
 - THE CABLE ASSEMBLY SHOULD BE RoHS COMPLIANT.
该产品符合RoHS.
 - THE CABLE ASSEMBLY SHALL MEET BELOW IMPEDANCE REQUIREMENT:
TERMINATION AREA: 85±10% OHMS, CABLE ABSOLUTE AREA: 85±10% OHMS.
该产品满足下面阻抗特性: 接触区域85±10%欧姆, 线材为85±10%欧姆.



东莞市箜国电子有限公司

NAME: SXS3 4X CABLE P3		PART NO. 818018942	
REV: A	UNIT: mm	DRW BY: KING ZHOU	APP BY: []
SCALE: N:1	DATE: 2020/07/16	DAW NHU	DRAWING NO. []

Tolerance	QUALITY SYMBOLS
X: ±0.50 X: ±0.30 .XX: ±0.15	<input type="checkbox"/> : CRITICAL <input type="checkbox"/> : MAJOR <input type="checkbox"/> : ZERO DEFECT S.P.C

DATE	DESCRIPTION	APPROVER
2021/07/29	新版发行	King Zhou

SIDE	DATE	DESCRIPTION	APPROVER
8	7	6	5