

66,93

61,11

54.3

15,37

12,22

1,2

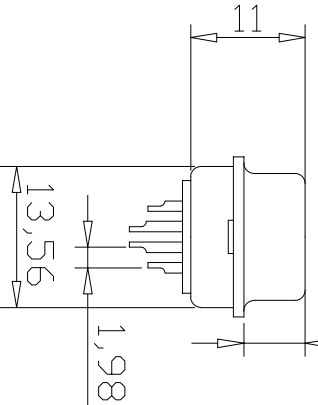
2,41

1,98

5,94

5,1

55,10



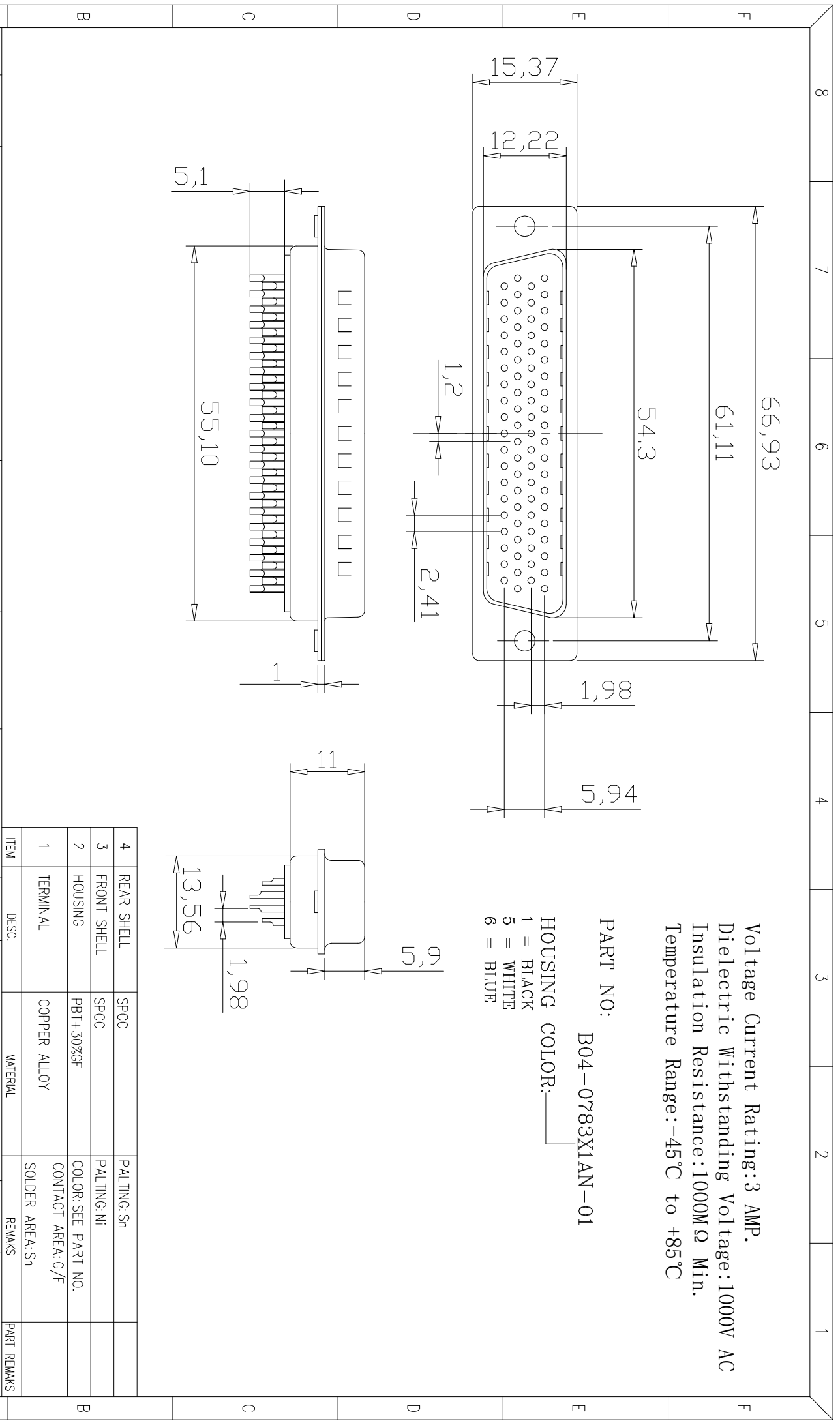
Voltage Current Rating: 3 AMP.  
 Dielectric Withstanding Voltage: 1000V AC  
 Insulation Resistance: 1000M  $\Omega$  Min.  
 Temperature Range: -45°C to +85°C

PART NO:

B04-0783X1AN-01

HOUSING COLOR:

- 1 = BLACK
- 5 = WHITE
- 6 = BLUE



4	REAR SHELL	SPCC	PALTING: Sn	
3	FRONT SHELL	SPCC	PALTING: Ni	
2	HOUSING	PBT+30%GF	COLOR: SEE PART NO.	
1	TERMINAL	COPPER ALLOY	CONTACT AREA: G/F	
			SOLDER AREA: Sn	

QUALITY SYMBOLS

□ :  MAJOR

⊠ :  CRITICAL

▽ :  ZERO DEFECT

S.P.C

Tolerance

X: ±0.50

.x: ±0.30

.xx: ±0.25

NAME:

HD-D-SUB 78P公头传统焊线式 (客户用图)

PART NO.

B04-0783X1AN-01

PART REMARKS

REV:

A

UNIT:

mm

DRW BY

JINGLI

CHK BY

KING ZHOU

APP BY

DRAWING NO.

B04-007

SCALE:

N:1

DATE:

2010/06/03

JINGLI

KING ZHOU

8	7	6	5	4	3	2	1
A	DATE	DESCRIPTION	APPROVER	ZERO DEFECT	S.P.C	东莞市箐国电子有限公司	
△	2010/06/03	NEW ISSUE	JINGLI	<input type="checkbox"/>	<input checked="" type="checkbox"/>		
SIDE	DATE	DESCRIPTION	APPROVER	ZERO DEFECT	S.P.C		
8	7	6	5	4	3	2	1