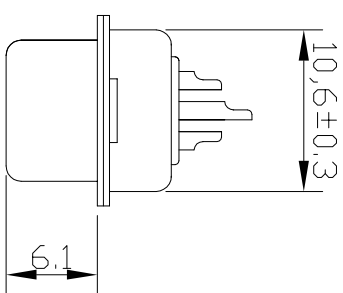
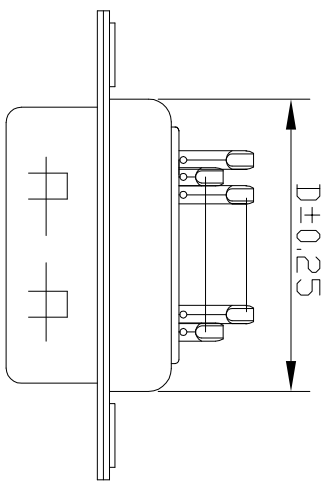


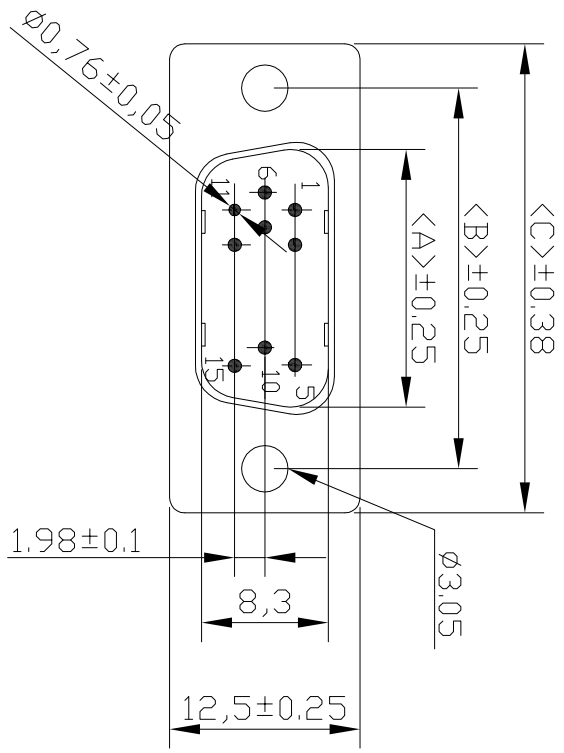
No. of Contact	A	B	C	D
15	16.9	25.0	30.8	19.3
26	25.2	33.3	39.1	27.5
44	39.0	47.0	53.0	41.3
62	55.4	63.5	69.3	57.7



Voltage Current Rating: 5 AMP.  
 Dielectric Withstanding Voltage: 1000V AC  
 Insulation Resistance: 1000MΩ Min.  
 Temperature Range: -25°C to +85°C

PART NO: B04-0XXX3X1AN-01

NO. OF CONTACT: 15 = 15 pos  
 26 = 26 pos  
 44 = 44 pos  
 62 = 62 pos  
 HOUSING COLOR: 1 = BLACK  
 5 = WHITE  
 6 = BLUE



ITEM	DESC.	MATERIAL	REMARKS	PART REMARKS
4	REAR SHELL	SPCC	PALTING: Sn	
3	FRONT SHELL	SPCC	PALTING: Ni	
2	HOUSING	PBT+30%GF	COLOR: SEE PART NO. CONTACT AREA: G/F	
1	TERMINAL	COPPER ALLOY	SOLDER AREA: Sn	

QUALITY SYMBOLS

□ : MAJOR  
 ⊠ : CRITICAL

▽ : S.P.C  
 ▽ : ZERO DEFECT

Tolerance

X. ±0.50  
 .X ±0.30  
 .XX ±0.25

⊙ : HOLE  
 △ : CONE

NAME: HD.D-SUB 传统公头焊线式通孔

REV: A UNIT: mm

SCALE: N:1 DATE: 2009/04/14

PART NO. B04-0XXX3X1AN-01

DRW BY KING ZHOU

CHK BY APP BY B04-002

东莞市箐国电子有限公司

DATE	DESCRIPTION	APPROVER
2009/04/14	NEW ISSUE	JINGLI

DATE	DESCRIPTION	APPROVER
2009/04/14	NEW ISSUE	JINGLI

DATE	DESCRIPTION	APPROVER
2009/04/14	NEW ISSUE	JINGLI