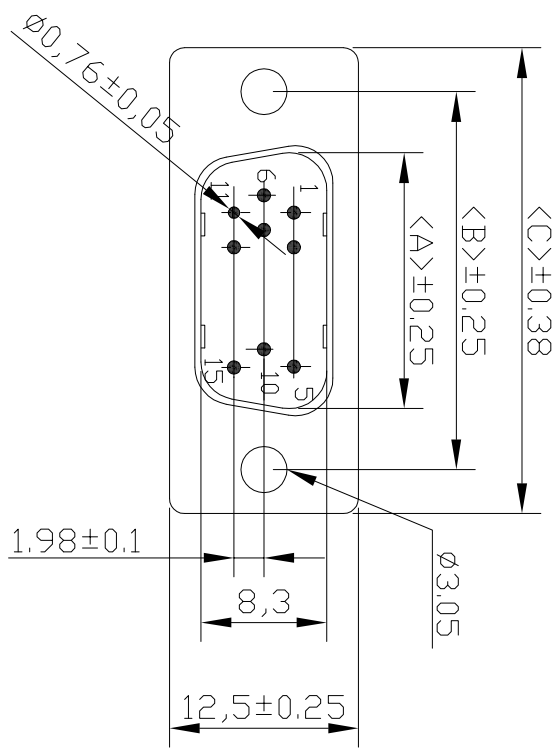
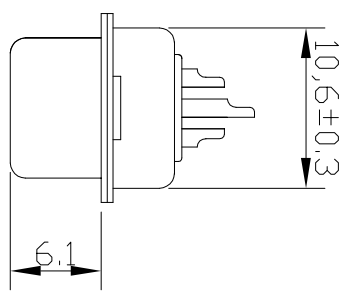
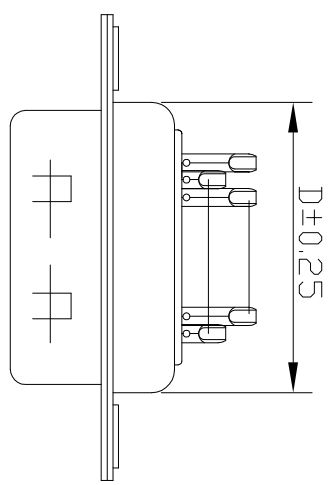


| | 3 | 2 | 1 |
|----------------|------|------|------|
| No. of Contact | A | B | C |
| 15 | 16.9 | 25.0 | 30.8 |
| 26 | 25.2 | 33.3 | 39.1 |
| 44 | 39.0 | 47.0 | 53.0 |
| 62 | 55.4 | 63.5 | 69.3 |
| | | | 57.7 |



Voltage Current Rating: 5 AMP.
 Dielectric Withstanding Voltage: 1000V AC
 Insulation Resistance: 1000M Ω Min.
 Temperature Range: -25°C to +85°C

PART NO: B04-0XX3X14N-02

NO. OF CONTACT:
 15 = 15 pos
 26 = 26 pos
 44 = 44 pos
 62 = 62 pos

HOUSING COLOR:
 1 = BLACK
 5 = WHITE
 6 = BLUE

| ITEM | DESC. | MATERIAL | REMARKS | PART REMARKS |
|------|-------------|--------------|---|--------------|
| 4 | REAR SHELL | SPCC | PALTING: Sn | |
| 3 | FRONT SHELL | SPCC | PALTING: Ni | |
| 2 | HOUSING | PBT+30%GF | COLOR: SEE PART NO. CONTACT AREA: Au 2U* | |
| 1 | TERMINAL | COPPER ALLOY | SOLDER AREA: Au G/F | |

QUALITY SYMBOLS
 :
 :
 :
 :
 :
 :

Tolerance
 X: ± 0.50
 X: ± 0.30
 .XX: ± 0.25

| NAME: | HD-D-SUB 传统公头焊线式 (车针) | PART NO.: | B04-0XX3X14N-02 |
|--------|-----------------------|--------------|-----------------|
| REV.: | A | UNIT: | mm |
| SCALE: | N:1 | DATE: | 2009/04/14 |
| | | DRW BY: | JINGLI |
| | | CHK BY: | KING ZHOU |
| | | APP BY: | |
| | | DRAWING NO.: | B04-002 |

| | | | | | | | |
|------|-------------|---|----------|-------------|-------------|---|---|
| 8 | 7 | 6 | 5 | 4 | 3 | 2 | 1 |
| A | NEW ISSUE | | JINGLI | CRITICAL | 东莞市箜国电子有限公司 | | |
| DATE | 2009/04/14 | | APPROVER | ZERO DEFECT | | | |
| SIDE | DESCRIPTION | | | S.P.C | | | |