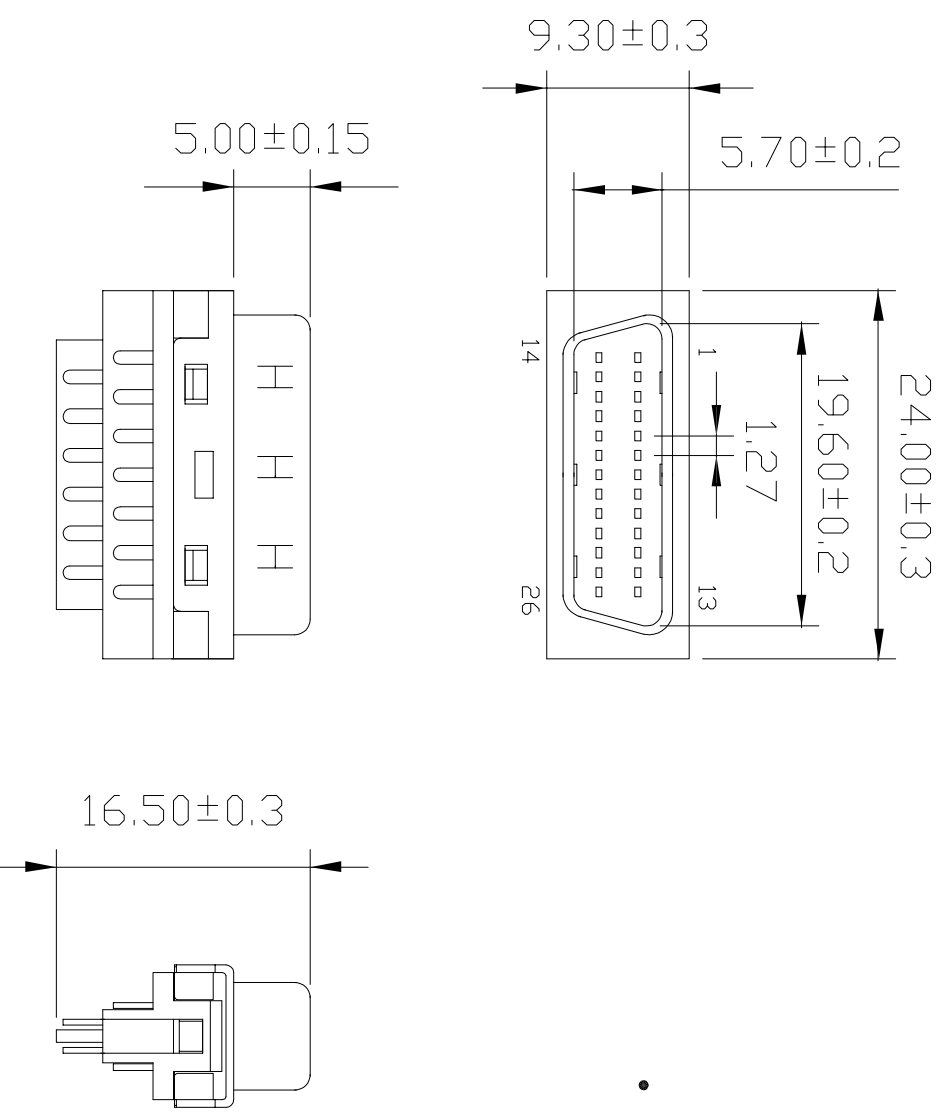
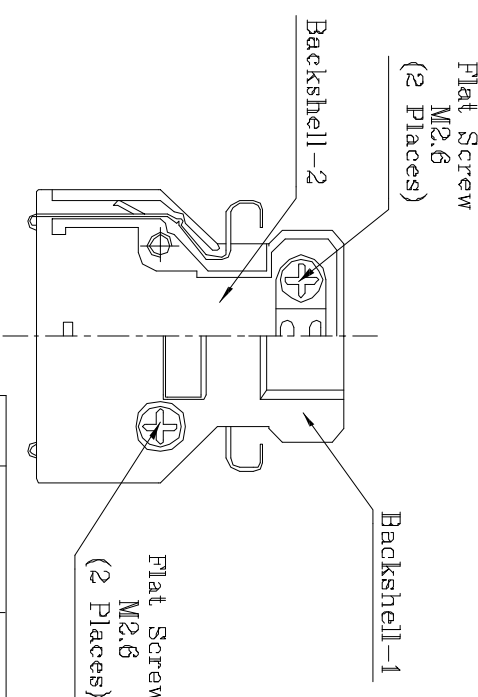
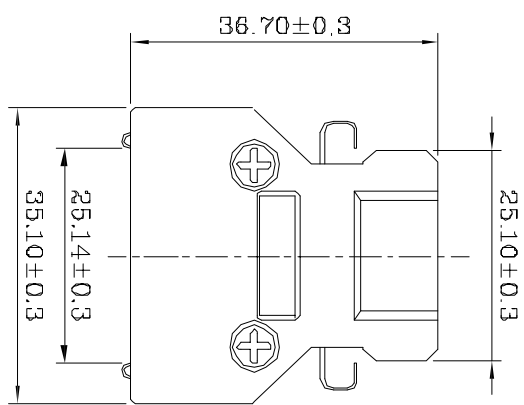
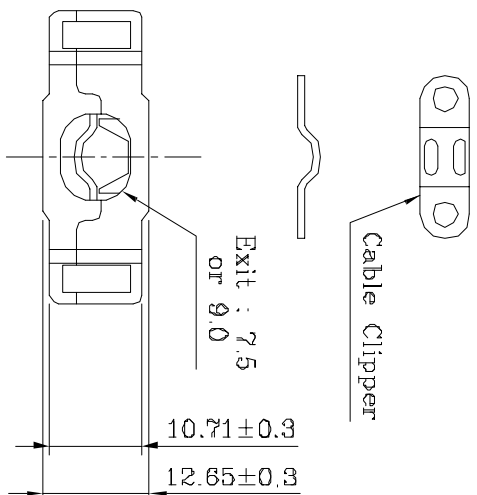
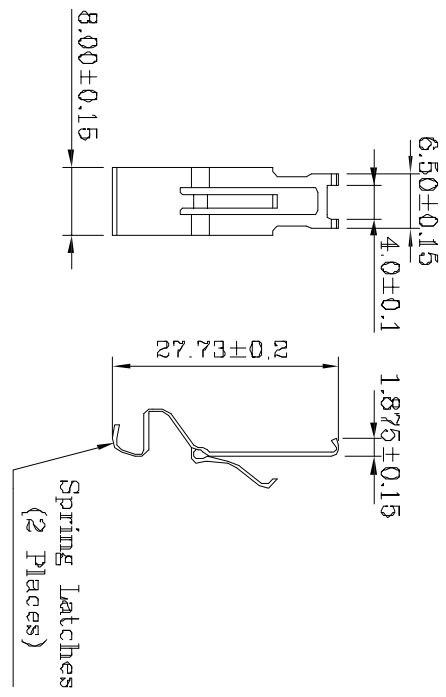


- **MATERIALS:(RoHS Compliant)**
- Housing And Cover : Plastic thermoplastic  
P.B.T UL94V-0 black
- Contacts : Phosphor bronze gold  
selective plated
- Front Shell : Steel nickel plated  
over copper
- **ELECTRICAL CHARACTERISTICS**
- Contact Current Rating: 1 Amp
- Dielectric Withstanding Voltage: 500V AC
- Insulation Resistance: 500MΩ/Min
- Contact Resistance: 35mΩ/Max
- Operation Temperature: -55°C ~ +105°C



|   |            |                     |              |           |  |                  |          |                 |        |
|---|------------|---------------------|--------------|-----------|--|------------------|----------|-----------------|--------|
| A |            | QUALITY SYMBOLS     | Tolerance    |           | NAME: SCS1-II 26P Male Solder Type For Cable |                  | PART NO. | B02-026311E0-01 |        |
| △ |            | □ :<br>CRITICAL     | × :<br>MAJOR | ±0.50     | REV: A                                       | UNIT: mm         | DRW BY   | CHK BY          | APP BY |
| △ | 2015/07/16 | ▽ :<br>ZERO DEFECT  | ▽ :<br>S.P.C | ±0.30     | SCALE: N:1                                   | DATE: 2015/07/16 | DAW NHU  | KING ZHOU       |        |
| A |            | DATE                | DESCRIPTION  | APPROVER  | 东莞市箐国电子有限公司                                  |                  |          |                 |        |
| 8 |            | 2015/07/16          | 新版发行         | King Zhou |  |                  |          |                 |        |
| B |            | DRAWING NO. MDD-005 |              |           |  |                  |          |                 |        |



- FEATURES:**
- Round cable straight exit
  - Strain Relief Staple With Spring Latches
  - Back shell desing by Die-Cast
  - Excellent EMI/RFI protection

PART NO: B02-026NN8N3-XX

ENTRY HOLE SIZES:  
70 = 7.5mm  
90 = 9.0mm

| ITEM | DESC.        | MATERIAL        | REMARKS    | PART REMARKS |
|------|--------------|-----------------|------------|--------------|
| 4    | Clipper      | Steel           | Ni Plating |              |
| 3    | Screw        | Steel           | Ni Plating |              |
| 2    | Spring latch | Stainless Steel | Ni Plating |              |
| 1    | Back Shell   | ZINC            | Ni Plating |              |

**QUALITY SYMBOLS**

|          |       |       |       |       |       |
|----------|-------|-------|-------|-------|-------|
| □ :      | ✗ :   | ◎ :   | ◎ :   | ◎ :   | ◎ :   |
| CRITICAL | MAJOR | ±0.50 | ±0.30 | ±0.25 | ±0.10 |

|         |                                     |             |                 |
|---------|-------------------------------------|-------------|-----------------|
| NAME:   | SCSI 26P ZINC Metal Hood With Latch | PART NO.    | B02-026NN8N3-XX |
| REV:    | A                                   | UNIT:       | mm              |
| SCALE:  | N:1                                 | DATE:       | 2022/01/14      |
| DRW BY: | DAWN HU                             | CHK BY:     | KING ZHOU       |
| APP BY: |                                     | DRAWING NO. | B02-026         |

东莞市箐围电子有限公司

|             |                                     |          |           |
|-------------|-------------------------------------|----------|-----------|
| DATE        | 2022/01/14 新版发行                     | APPROVER | King Zhou |
| DESCRIPTION | SCSI 26P ZINC Metal Hood With Latch |          |           |