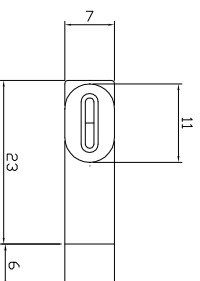
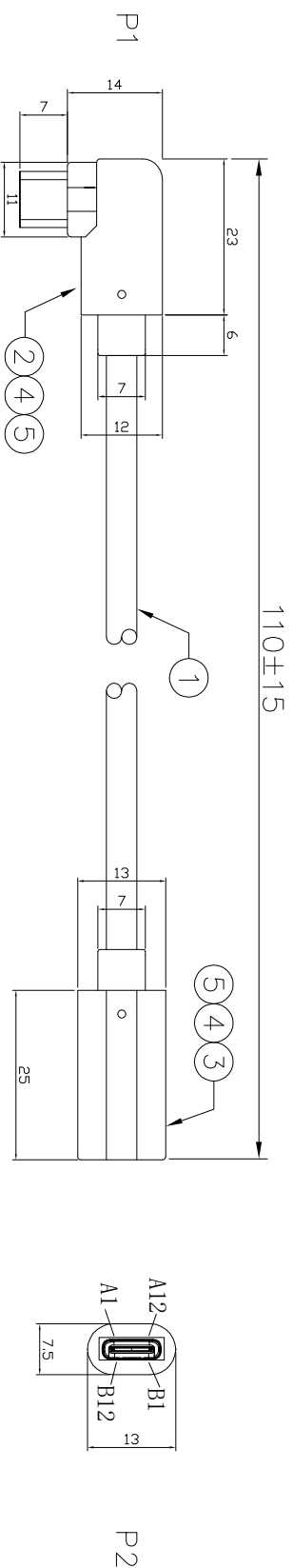


REV.	DESCRIPTION	DATE

RoHS



PIN OUT

(A4,B4,A9,B9) Vbus	RED	Vbus(A4,B4,A9,B9)
A7(D-)	WHITE	A7+B7 (D-)
A6(D+)	GREEN	A6+B6 (D+)
A2(TX1+)	RED	A2(TX1+)
A3(TX1-)	WHITE	A3(TX1-)
B10(RX1-)	YELLOW	B10(RX1-)
B11(RX1+)	BLUE	B11(RX1+)
B2(RX1-)	VIOY	B2(RX1-)
B3(RX1+)	ORANGE	B3(RX1+)
A11(RX1-)	WHITE	A11(RX1-)
A10(RX1+)	BROWN	A10(RX1+)
A5 CC	PINK	A5 CC
B5 VCONN	BLUE	B5 VCONN
A8 SUB1	VIOY	A8 SUB1
B8 SUB2	YELLOW	B8 SUB2
(A1,B1,A12,B12) GND	Black	GND(A1,B1,A12,B12)
SHELL	Braid	SHELL

C1=10nF

NOTE:

1. 100% OPEN & SHORT WIRE TEST;
2. CONTACT RESISTANCE 2ohm Max;
3. INSULATION RESISTANCE 10M ohm Min;
4. HI-POT DC 300V;

5	Over mold	PVC 50P BLACK	30G			<p>东莞市箐国电子有限公司</p> <p>UNLESS OTHERWISE SPECIFIED TOLERANCE X.XX ± ; angles ± ;</p> <p>DESCRIPTION: USB Type-C M-F Adapter Cable(With Thermistor)</p> <p>CUSTOMER P/N: LKU31MF001</p> <p>PRODUCT NO.: DWG NO: 20201022-02</p> <p>SCALE: NONE</p> <p>SHEET: 1 of 1</p>
4	Inter mold	PE	10G			
3	CONN 2	TYPE-C Female color Black PIN/GF with PCBA	1PCS			
2	CONN 1	TYPE-C Male Color black PIN AU:G/F with PCBA	1PCS			
1	CABLE	UL2725(USB3.1) (1P#32+DAM)*4P+4G#32+1P#32+2C#22 +AEB OD:4.5MM BLACK	1PCS			
NO.	MATERIAL.P/N	DESCRIPTION	Q'TY	VENDOR	APPROVED:	<p>REV: X/0</p> <p>UNIT: mm</p> <p>DATE: 20.12.02</p>