

PART NO.:

B03-0203X1X2-X1

COLOR:.....

1:BLACK

C:BEIGE

CONTACT AREA:.....

A:G/F

E:Au 5u"

H:Au 15u"

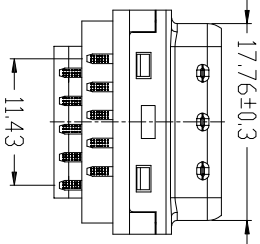
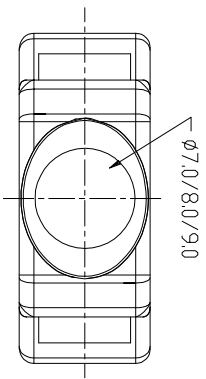
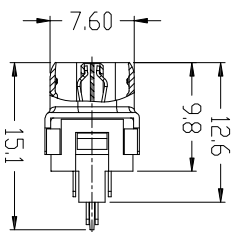
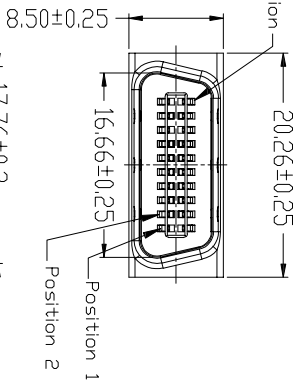
HOOD OD : .....

7:7.0mm

8:8.0mm

9:9.0mm

Contact Current Rating: 1 Amp  
 Dielectric Withstanding Voltage: 500V AC  
 Insulation Resistance: 500MΩ/Min  
 Contact Resistance: 35mΩ/Max  
 Operation Temperature: -25°C ~ +85°C



QUALITY SYMBOLS

□: .....

CRITICAL

MAJOR

ZERO DEFECT

S.P.C

Tolerance

X: ±0.80

.X: ±0.50

.XX: ±0.30

ITEM	DESC.	MATERIAL	REMARKS	PART REMARKS
6	SHRAPNEL	SUS		
5	OUTSIDE SHEEL	SPCC	PLATING:NI	
4	HOOD&WRENCH	ABS+G.F.30% (UL 94V-0)	COLOR:SEE P/N	
3	HOUSING&COVER	PBT+G.F.30% (UL 94V-0)	COLOR:BLACK	
2	SHEEL	SPCC	PLATING:NI	
1	TERMINAL	COPPER ALLOY	CONTACT AREA:P/N SOLDER AREA:Sn UNDER-PLATING:NI	

NAME: SC51 20P Male Solder Type For Cable PART NO. B03-0203X1X2-X1

REV: A UNIT: mm DRW BY CHK BY APP BY DRAWING NO. B03-031

SCALE: N:1 DATE: 2009/04/02 DAW NHU KING ZHOU

东莞市箐国电子有限公司

DATE 2009/04/02 新版发行

APPROVER King Zhou

DESCRIPTION

SIDE

8

7

6

5

4

3

2

1