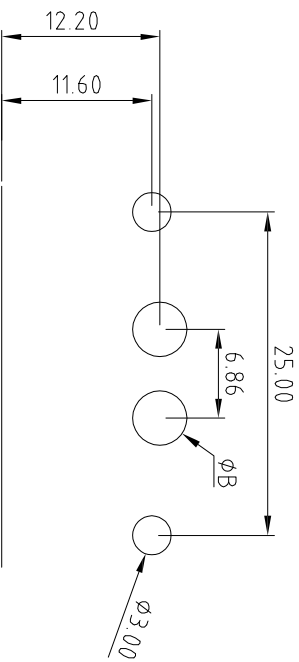
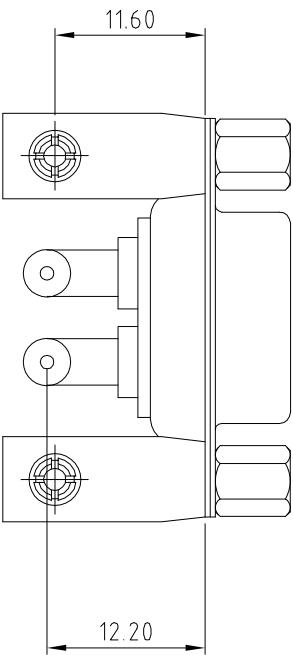


High Power Contact Current Rating:  
10,20 or 40AMPS  
High Power Contact Resistance:  
2.7 Milliohms Max.  
Dielectric Withstanding Voltage:  
1000V AC For 1 Minute  
Insulation Resistance:5000MΩ Min.  
Temperature Range:-25°C to +85°C

PART NO: B09-2V26114D-X1

Current Rating: \_\_\_\_\_  
A = 10 AMPS Dim.A  $\phi$ 1.7 Dim.B  $\phi$ 2.2  
B = 20 AMPS Dim.A  $\phi$ 2.8 Dim.B  $\phi$ 3.3  
C = 30 AMPS Dim.A  $\phi$ 3.2 Dim.B  $\phi$ 3.7  
D = 40 AMPS Dim.A  $\phi$ 3.7 Dim.B  $\phi$ 4.2



PCB LAYOUT

ITEM	DESC.	MATERIAL	REMARKS	PART REMARKS
6	JACKSCREWS	BRASS	PLATING: Ni	
5	HOUSING	PBT+30%GF	COLOR: WHITE	
4	RIVETED INSERT	BRASS	PLATING: Ni	
3	REAR SHELL	SPCC	PLATING: Sn	
2	FRONT SHELL	SPCC	PLATING: Ni	
1	TERMINAL	BRASS	TERMINAL FINISH: FULL GOLD FINISHED 2u"	

QUALITY SYMBOLS

□: CRITICAL

⊠: MAJOR

▽: ZERO DEFECT

▽: S.P.C

Tolerance

X: ±0.50

.X: ±0.30

.XX: ±0.25



NAME: 2V2 Female R/A Type With Bracket+Nut

REV: A

SCALE: N:1

DATE: 2019/09/04

UNIT: mm

DATE: 2019/09/04

PART NO. B09-2V26114D-X1

CHK BY CHK BY

APP BY APP BY

DRAWING NO. B09-006

东莞市箐国电子有限公司

DATE	DESCRIPTION	APPROVER
2019/09/04	NEW ISSUE	JINGLI

SIDE	DATE	DESCRIPTION	APPROVER
8	7	6	5