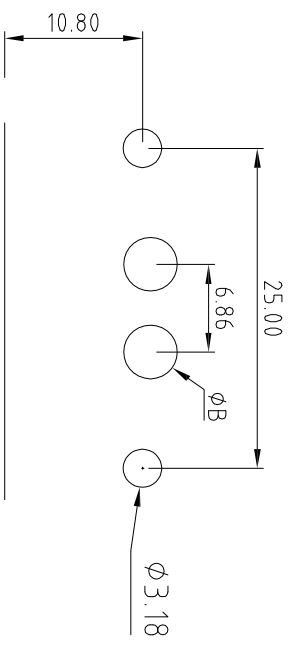
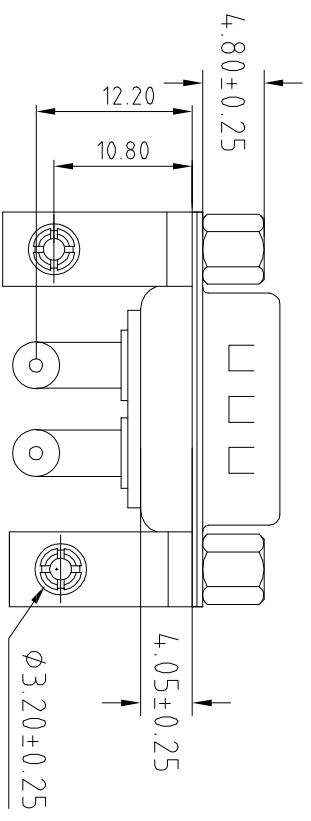


High Power Contact Current Rating:
10.20 or 40AMPS
High Power Contact Resistance:
2.7 Milliohms Max.
Dielectric Withstanding Voltage:
1000V AC For 1 Minute
Insulation Resistance:5000MΩ Min.
Temperature Range:-25°C to +85°C

PART NO:
B09-2V25114D-X1

Current Rating: _____
A = 10 AMPS Dim.A φ1.7 Dim.B φ2.2
B = 20 AMPS Dim.A φ2.8 Dim.B φ3.3
C = 30 AMPS Dim.A φ3.2 Dim.B φ3.7
D = 40 AMPS Dim.A φ3.7 Dim.B φ4.2



PCB LAYOUT

6	JACKSCREWS	BRASS	PLATING:NI	
5	HOUSING	PBT+30%GF	COLOR:WHITE	
4	RIVETED INSERT	BRASS	PLATING:NI	
3	REAR SHELL	SPCC	PLATING:Sn	
2	FRONT SHELL	SPCC	PLATING:NI	
1	TERMINAL	BRASS	TERMINAL FINISH:FULL GOLD FINISHED 2u"	

QUALITY SYMBOLS

□: CRITICAL
⊠: MAJOR
△: ZERO DEFECT S.P.C

Tolerance

x: ±0.50
.x: ±0.30
.xx: ±0.25

A	2019/09/04	NEW ISSUE	JINGLI
DATE	DESCRIPTION		
SIDE	8	7	6

NAME:	2V2 Male R/A Type With Bracket+Nut				PART NO.:	B09-2V25114D-X1		PART REMARKS
REV.:	A	UNIT:	mm	DRW BY:	CHK BY:	APP BY:	DRAWING NO.:	
SCALE:	N:1	DATE:	2019/09/04	JINGLI	KING ZHOU		B09-005	

东莞市箐围电子有限公司