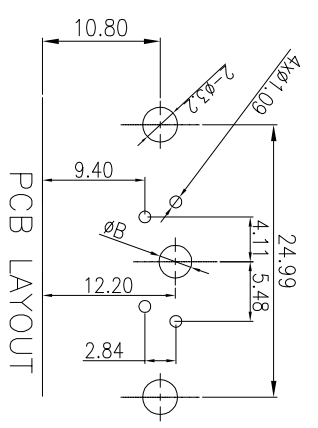
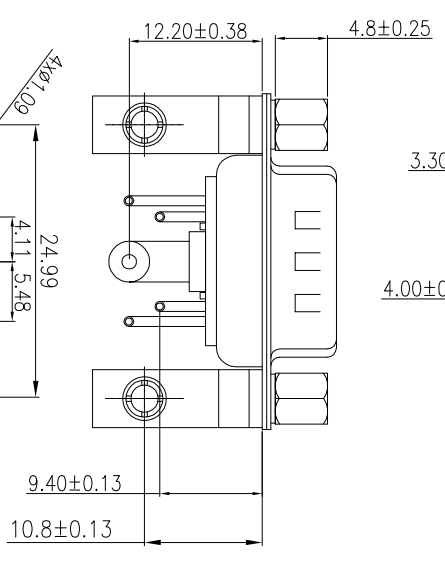
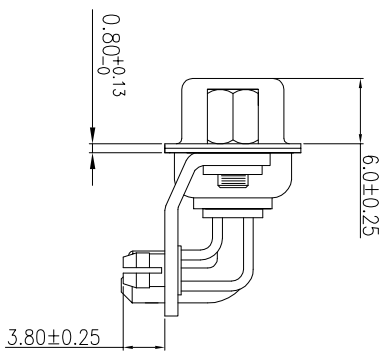
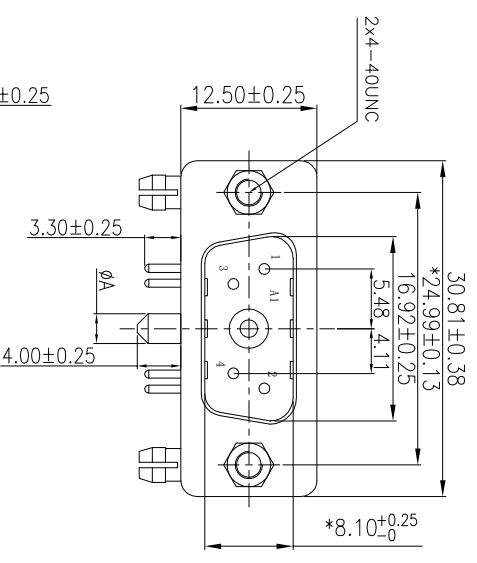


8 7 6 5 4 3 2 1



High Power Contact Current Rating:  
10,20 or 40AMPS  
High Power Contact Resistance:  
2.7 Milliohms Max.  
Dielectric Withstanding Voltage:  
1000V AC For 1 Minute  
Insulation Resistance:5000MΩ Min.  
Temperature Range:-25°C to +85°C

PART NO: B08-5W15114D-X1

Current Rating: \_\_\_\_\_  
A = 10 AMPS Dim.A ø1.7 Dim.B ø2.2  
B = 20 AMPS Dim.A ø2.8 Dim.B ø3.3  
C = 30 AMPS Dim.A ø3.2 Dim.B ø3.7  
D = 40 AMPS Dim.A ø3.7 Dim.B ø4.2

6	JACKSCREWS	BRASS	PLATING: NI	
5	HOUSING	PBT+30%GF	COLOR: WHITE	
4	RIVETED INSERT	BRASS	PLATING: NI	
3	REAR SHELL	SPCC	PLATING: Sn	
2	FRONT SHELL	SPCC	PLATING: NI	
1	TERMINAL	BRASS	TERMINAL FINISH: FULL GOLD FINISHED 2u"	

QUALITY SYMBOLS

□ : CRITICAL  
✖ : MAJOR  
▽ : ZERO DEFECT S.P.C

Tolerance

X. ±0.50  
X ±0.30  
.xx ±0.25

NAME:	5W1 Mole R/A Type With Bracket+Nut				PART NO.	B08-5W15114D-X1	PART REMARKS	
REV:	A	UNIT:	mm	DRW BY	CHK BY	APP BY	DRAWING NO.	B08-033
SCALE:	N:1	DATE:	2017/04/29	JINGLI	KING ZHOU			

东莞市箐国电子有限公司

DESCRIPTION	NEW ISSUE	APPROVER	JINGLI
DATE	2017/04/29		