

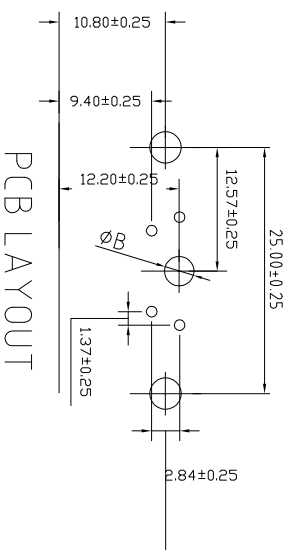
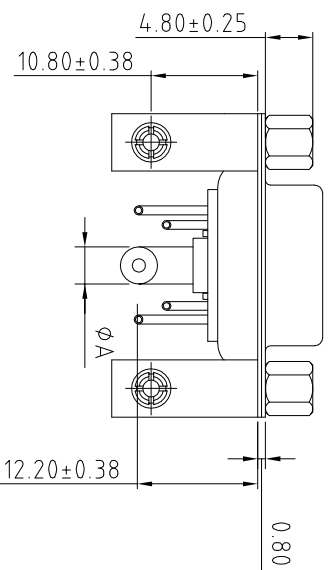
High Power Contact Current Rating:
10,20 or 40AMPS
High Power Contact Resistance:
2.7 Milliohms Max.
Dielectric Withstanding Voltage:
1000V AC For 1 Minute
Insulation Resistance:5000M Ω Min.
Temperature Range:-25°C to +85°C

PART NO:



B08-5W16114D-X1

Current Rating: _____

A = 10	AMPS	Dim.A	01.7	Dim.B	02.2
B = 20	AMPS	Dim.A	02.8	Dim.B	03.3
C = 30	AMPS	Dim.A	03.2	Dim.B	03.7
D = 40	AMPS	Dim.A	03.7	Dim.B	04.2



6	JACKSCREWS	BRASS	PLATING: NI	
5	HOUSING	PBT+30%CF	COLOR: WHITE	
4	RIVETED INSERT	BRASS	PLATING: NI	
3	REAR SHELL	SPCC	PLATING: Sn	
2	FRONT SHELL	SPCC	PLATING: NI	
1	TERMINAL	BRASS	TERMINAL FINISH: FULL GOLD FINISHED 2u"	
ITEM	DESC.	MATERIAL	REMARKS	PART REMARKS

			QUALITY SYMBOLS		Tolerance		NAME: 5W1 Female R/A Type With Bracket+Nut		PART NO.	B08-5W16114D-X1	
			<input type="checkbox"/> : <input checked="" type="checkbox"/> :	X. ± 0.50	REV: A	UNIT: mm	DRW BY	CHK BY	APP BY	DRAWING NO.	
			CRITICAL MAJOR	.X ± 0.30	SCALE: N:1	DATE: 2017/04/29	JINGLI	KING ZHOU			B08-032
Δ	2017/04/29	NEW ISSUE		.xx ± 0.25							
SIDE	DATE	DESCRIPTION	APPROVER	ZERO DEFECT S.P.C							
											
东莞市箐国电子有限公司											

东莞市箐田电子有限公司