

# AMPHENOL PART NUMBER CONFIGURATION

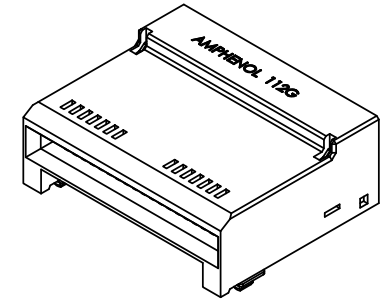
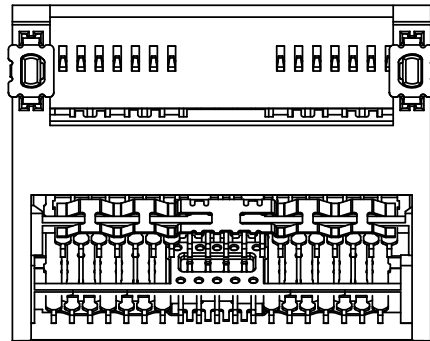
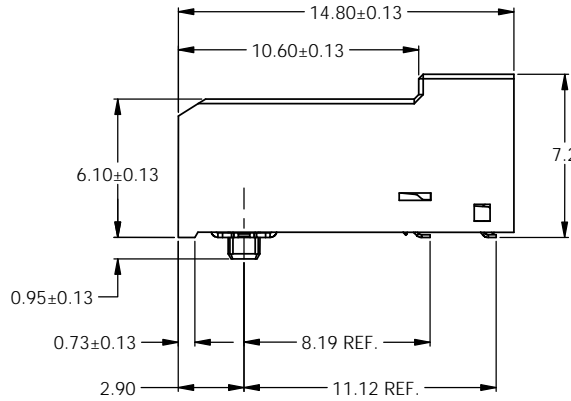
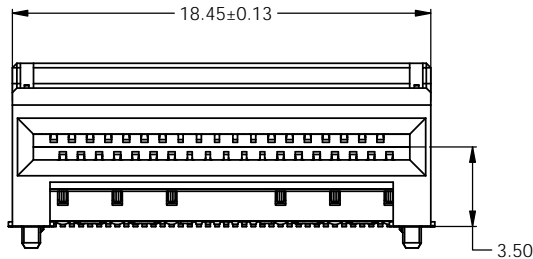
**V95-ADZ01-0000XXX**

**PACKAGING**  
T: TAPE AND REEL

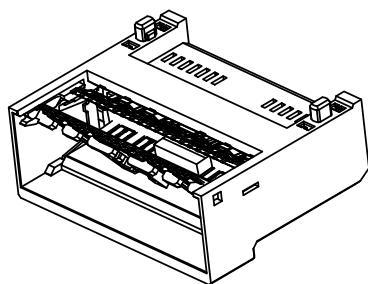
**PLATING**  
T: 30 u" MIN. GOLD ON MATING END WITH 100 u" MIN. OF MATTE TIN ON SOLDER TERMINATION, 50 MIN. u" OF NICKEL UNDER PLATE ALL OVER

**CONNECTOR MOUNTING**  
1: STANDARD, SINGLE SIDE  
2: SOLDER RINGS, BELLY TO BELLY

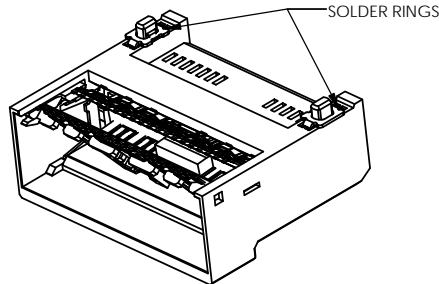
REVISIONS			
REV	DESCRIPTION, ECN, EAR NO.	DATE	APP'D
D	DESIGN UPDATE	29-Jun-21	J.S
E	DRAWING UPDATE	13-Jul-21	J.S
E1	ADD DIMENSION	22-Jul-21	J.S
E2	UPDATE VIEW	01-Sep-21	J.S



**PRELIMINARY**



V95-ADZ01-000011T  
(FOR SINGLE SIDE MOUNT APPLICATION)



V95-ADZ01-000021T  
(BELLY TO BELLY APPLICATION)



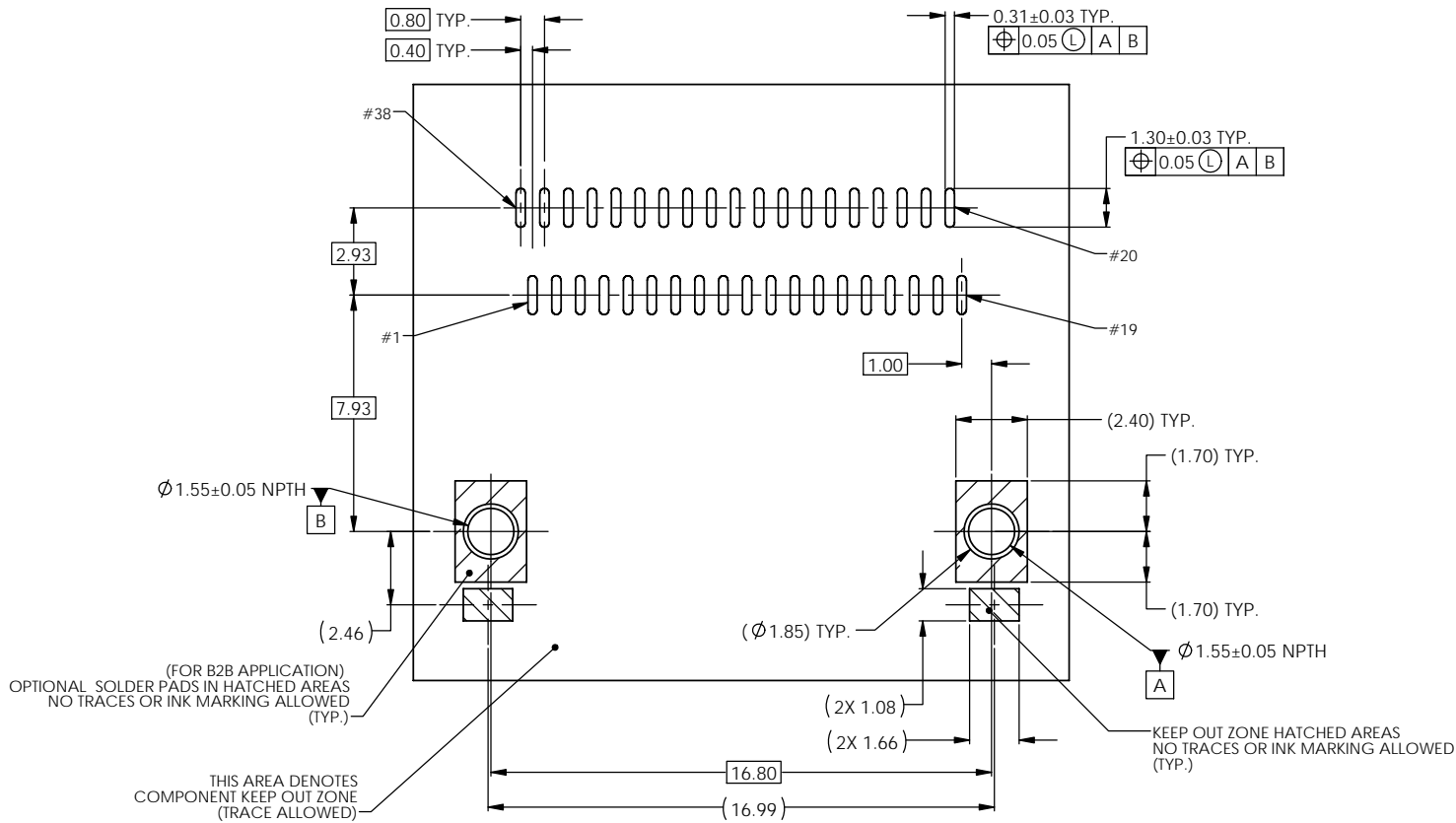
UNLESS SPECIFIED OTHERWISE	DRAWN	ALVIN.C	NOV 18/20
PRIMARY UNITS	MILLIMETRES	CHECKED	JASON.S
SECONDARY	INCHES	DESIGNED	ALVIN.C
REFERENCE IN PARENTHESES			
GENERAL TOLERANCES			
1 DECIMAL PLACE	±0.20	ENG. REL. NO.	
2 DECIMAL PLACES	±0.10	REF.	
ANGULAR DEGREES	±2°	THIRD ANGLE PROJECTION	
		DO NOT SCALE DRAWING	

**Amphenol High Speed Interconnects**  
A Division of Amphenol Corp. [www.amphenolcanada.com](http://www.amphenolcanada.com)

**QSFP 112G 1X1 SMT CONNECTOR**

DWG. NO.	P-V95-ADZ01	REV	E2
CODE ID NO.	03554	DWG SIZE:	C
SCALE:	8:1	SHEET	1 OF 2

REVISIONS			
REV	DESCRIPTION, ECN, EAR NO.	DATE	APP'D
	REFER TO SHEET 1		



**PRELIMINARY**

UNLESS SPECIFIED OTHERWISE	DRAWN	ALVIN.C	NOV 18/20
PRIMARY UNITS	MILLIMETRES	CHECKED	JASON.S
SECONDARY	INCHES	DESIGNED	ALVIN.C
REFERENCE IN PARENTHESES			
GENERAL TOLERANCES			
1 DECIMAL PLACE	±0.20	ENG. REL. NO.	
2 DECIMAL PLACES	±0.05	REF.	
ANGULAR DEGREES	±2°	THIRD ANGLE PROJECTION	DO NOT SCALE DRAWING

**Amphenol High Speed Interconnects**  
A Division of Amphenol Corp. [www.amphenolcanada.com](http://www.amphenolcanada.com)

**QSFP 112G 1X1 SMT CONNECTOR**

DWG. NO.	P-V95-ADZ01	REV	E2
CODE ID NO.	03554	DWG SIZE:	C
SCALE:	B:1	SHEET	2 OF 2