

**AMPHENOL PART NUMBER CONFIGURATION**  
U90 - A 1 X 1 - 1 X 0 X

**HEAT SINK OPTION**

- 1 = NO HEAT SINK OR CLIP SHIPPED
- 2 = STANDARD HEAT SINK (HARD COAT ANODIZED) AND CLIP (H=6.5mm; SAN HEIGHT)
- 3 = STANDARD HEAT SINK (HARD COAT ANODIZED) AND CLIP (H=4.2mm; PCI HEIGHT)
- 4 = STANDARD HEAT SINK (HARD COAT ANODIZED) AND CLIP (H=13.5mm; TALL)
- A = STANDARD HEAT SINK (NICKEL PLATED) AND CLIP (H=6.5mm; SAN HEIGHT)
- B = STANDARD HEAT SINK (NICKEL PLATED) AND CLIP (H=4.2mm; PCI HEIGHT)
- C = STANDARD HEAT SINK (NICKEL PLATED) AND CLIP (H=13.5mm; TALL)

**NOTE:** FOR PIN STYLE HEAT SINKS REFER TO DRAWING NUMBER: P-U90-H1X1-1XXX

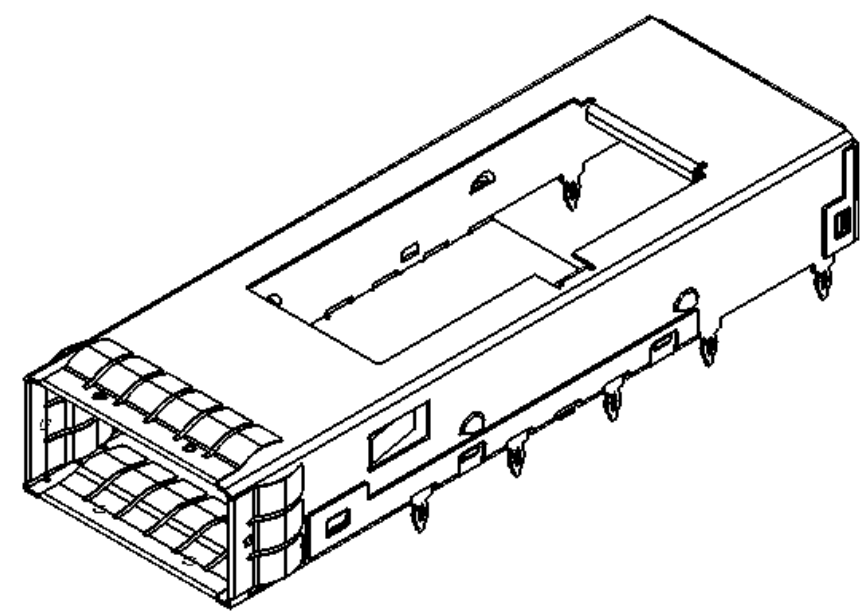
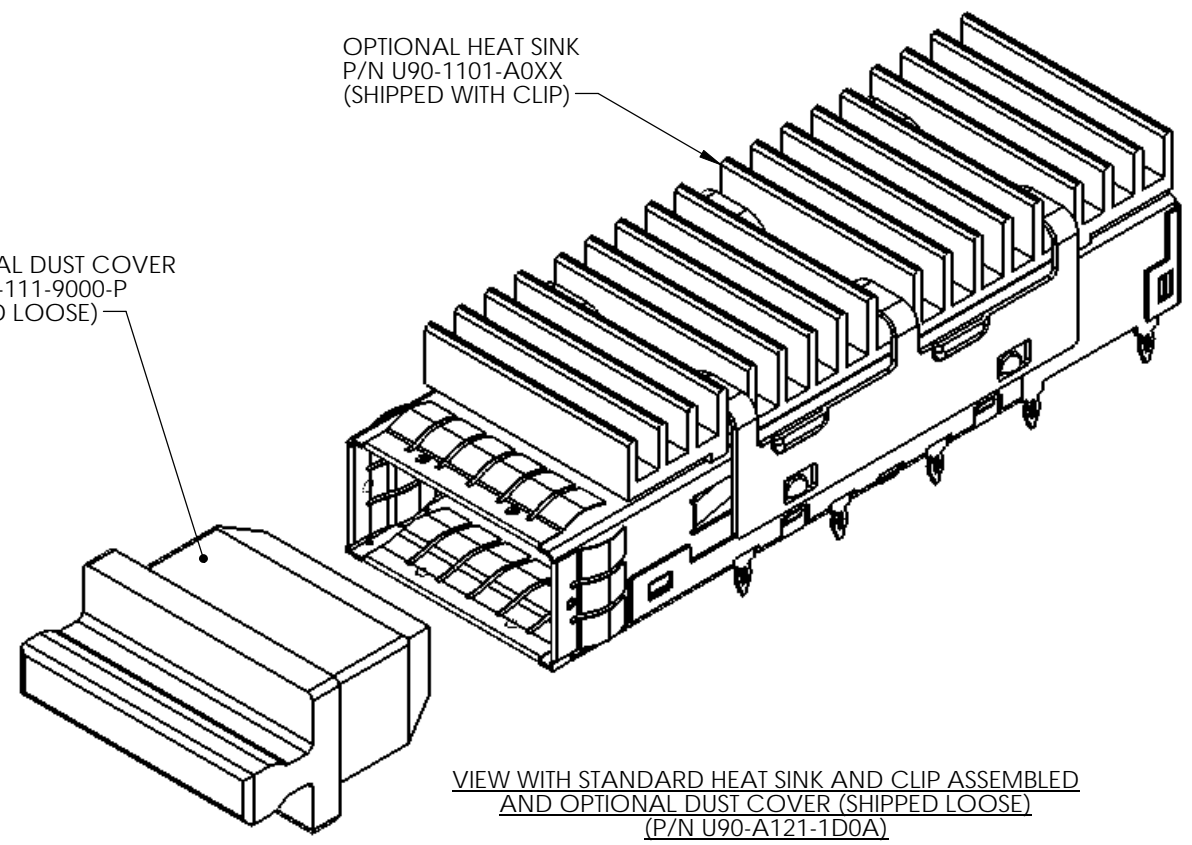
**PACKAGING**

- 1 = TRAY PACKAGING W/ HEAT SINK IN SEPARATE TRAY
- A = TRAY PACKAGING W/ HEAT SINK ASSEMBLED
- T = TAPE AND REEL PACKAGING W/ HEAT SINK IN SEPARATE TRAY

**OPTIONAL DUST COVER**

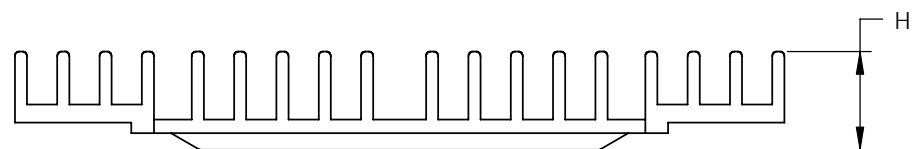
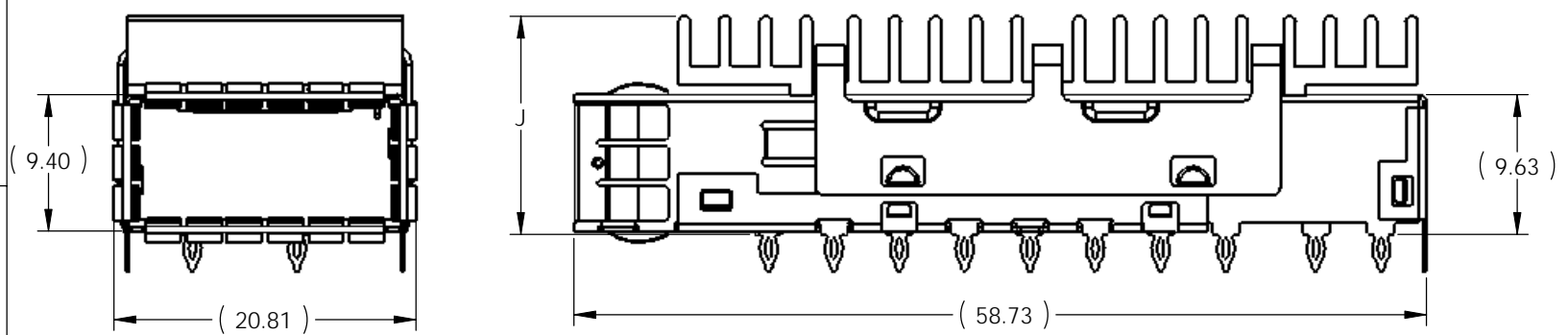
- 0 = WITHOUT DUST COVER
- D = WITH DUST COVER (SHIPPED LOOSE PIECE)

REVISIONS				
REV.	ECN	DESCRIPTION	DATE	APPROVED
F		NOTE ADDED "FOR PIN STYLE REFER TO U90-H1X1-1XXX"	JAN 12/09	ZLJ
G		REAR STOP MODIFIED	SEP 18/09	ZLJ



**NOTES:**

- CAGE AND EMI SPRINGS MATERIAL: COPPER ALLOY  
HEAT SINK CLIP MATERIAL: STEEL ALLOY  
HEAT SINK MATERIAL: ALUMINUM  
CAGE PLATING: 3.81µm [100µ"] MIN. NICKEL.
- CAGE IS INTENDED TO BE COMPLIANT WITH THE QUAD SMALL FORM-FACTOR PLUGGABLE (QSFP) TRANSCEIVER SPECIFICATION REVISION 1.0.
- HEAT SINK, HEAT SINK CLIP AND DUST COVER ARE SHIPPED LOOSE PIECE.



**DO NOT SCALE DRAWING**

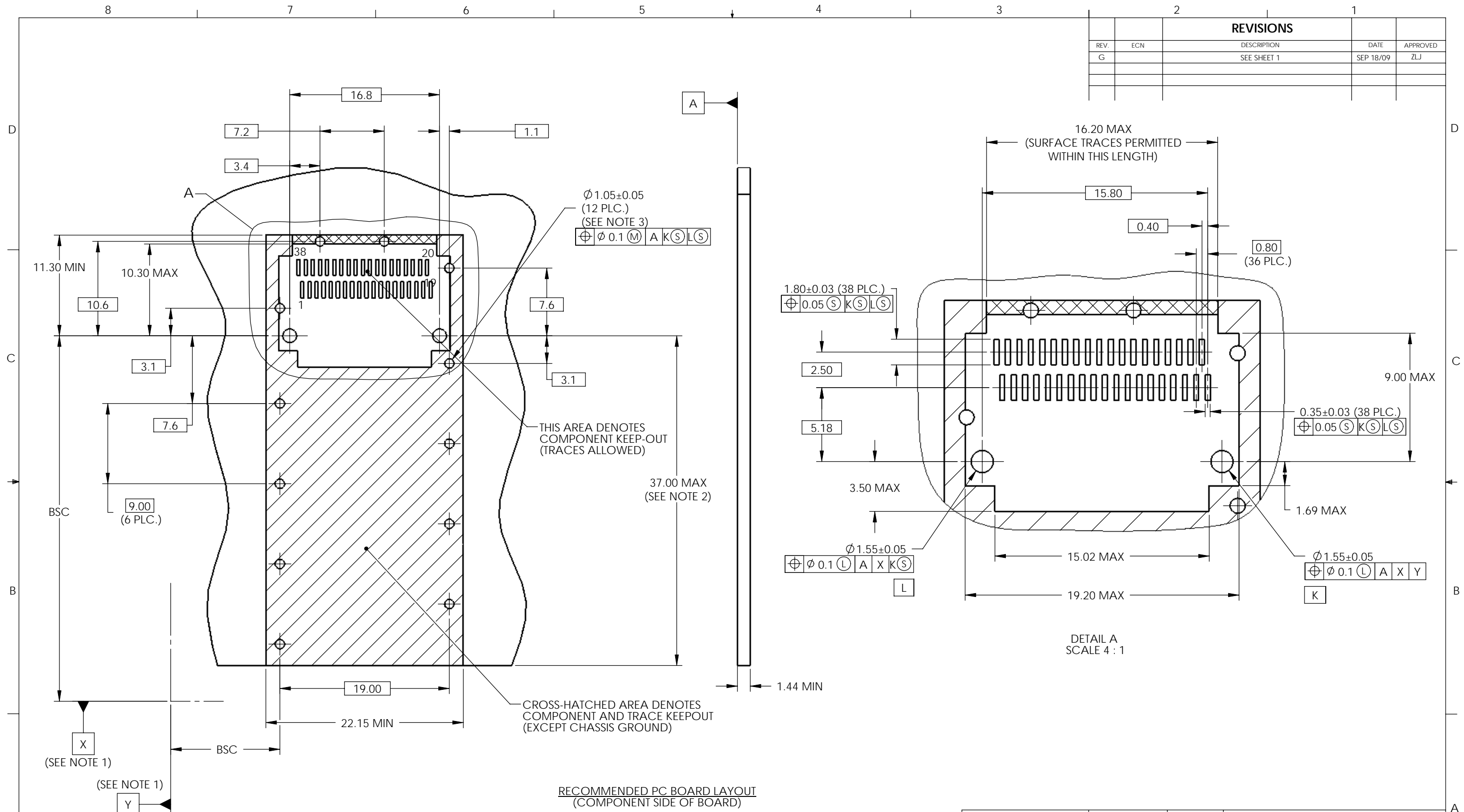
THIS DOCUMENT CONTAINS PROPRIETARY INFORMATION AND SUCH INFORMATION MAY NOT BE DISCLOSED TO OTHERS FOR ANY PURPOSE OR USED FOR MANUFACTURING PURPOSES WITHOUT PERMISSION FROM AMPHENOL CANADA CORP.



PART NUMBER	DIM "J"	DIM "H"	HEAT SINK & CLIP OPTION
U90-A121-1X0X	15.03	6.50	IF HEAT SINK AND CLIP ARE SHIPPED LOOSE SEE DRAWING P-U90-1101-AXX0-BP
U90-A131-1X0X	12.73	4.20	
U90-A141-1X0X	22.03	13.50	
U90-A1A1-1X0X	15.03	6.50	
U90-A1B1-1X0X	12.73	4.20	
U90-A1C1-1X0X	22.03	13.50	

UNLESS OTHERWISE SPECIFIED DIMENSIONS ARE IN MILLIMETERS TOLERANCES ARE:		<b>APPROVALS</b>		<b>DATE</b>		<b>Amphenol Canada Corp.</b>	
DECIMALS	ANGLES	DRAWN	DESIGNED	DEC04/06			
X.X ± 0.15	± 0.5°	M.LONG	M.LONG	DEC04/06		TITLE OSFP CAGE ASSEMBLY	
X.XX ± 0.10			J.SI	DEC04/06			
MATERIAL AND FINISH SEE NOTE 1		QA APPD					
REF.		IE APPD				SIZE A3	DWG. NO P-U90-A1X1-1X0X
CODE IDENT. NO.	03554	DWG APPD A.GREEN		DEC04/06		SCALE 2:1	PROJECT
						SHEET	1 OF 4

REVISIONS				
REV.	ECN	DESCRIPTION	DATE	APPROVED
G		SEE SHEET 1	SEP 18/09	ZLJ



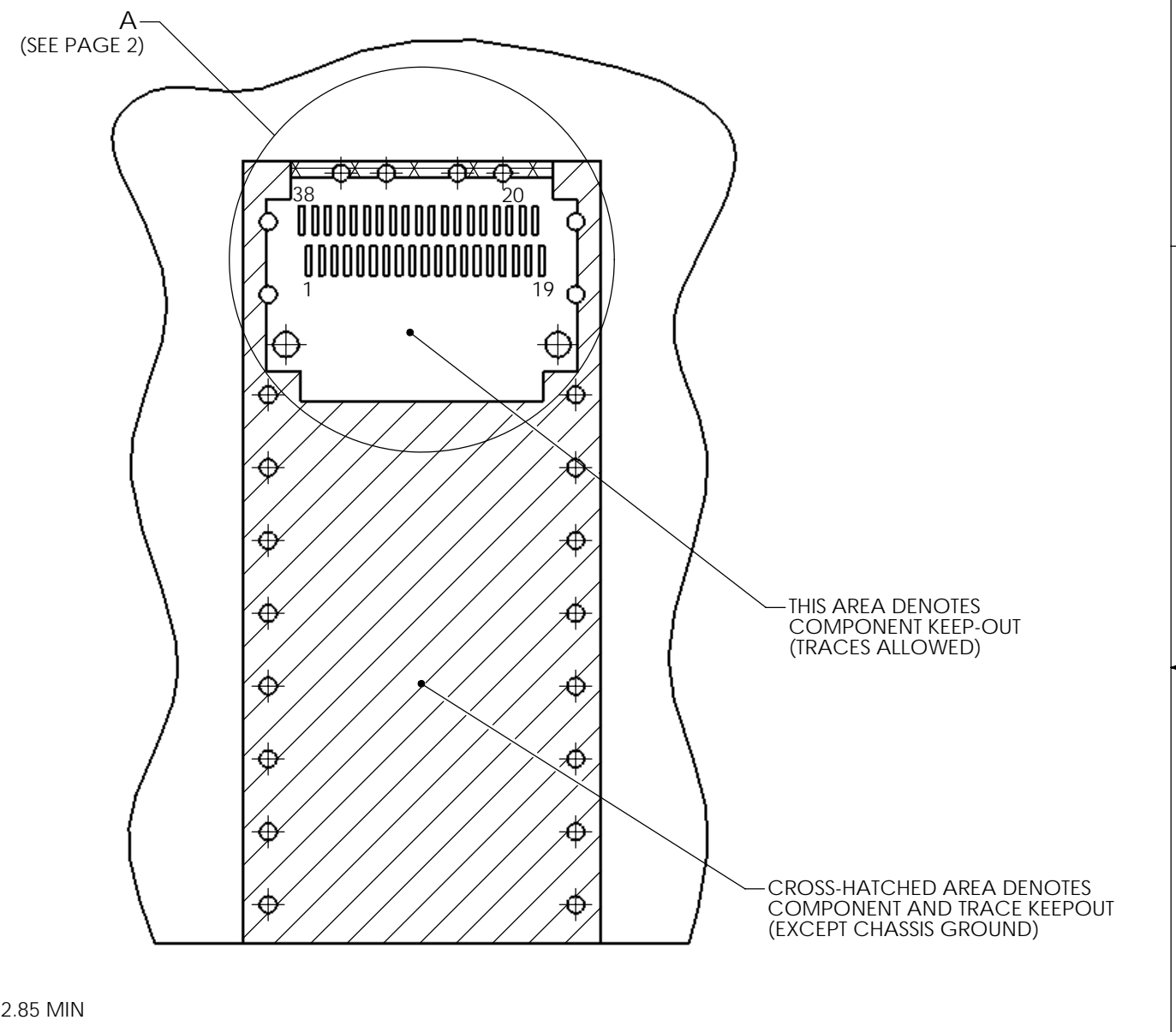
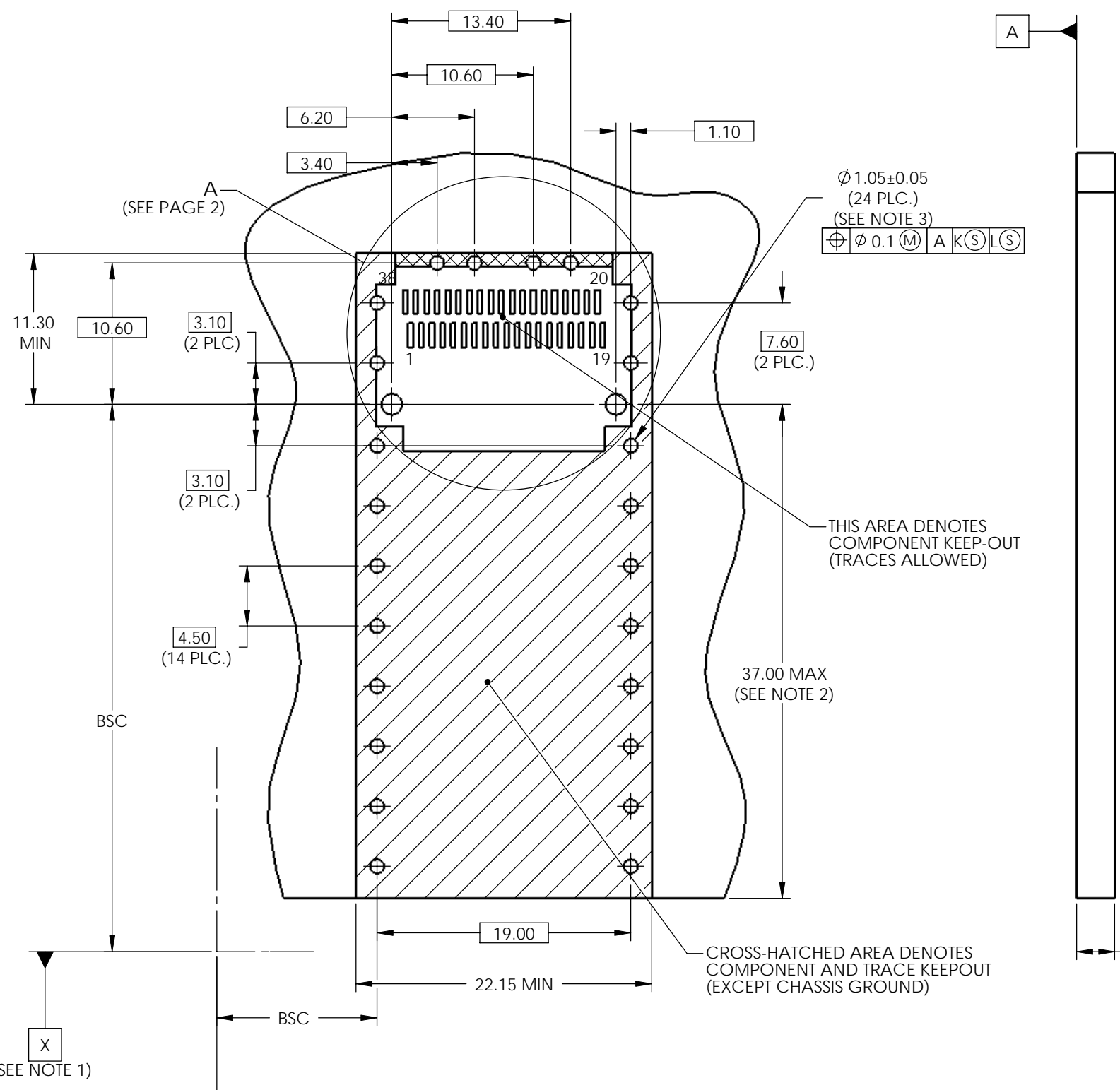
- NOTES:
- DATUMS X AND Y ESTABLISHED BY CUSTOMER'S FUDUCIAL.
  - LOCATION OF EDGE OF PCB IS APPLICATION SPECIFIC.
  - FINISHED HOLE SIZE.

**DO NOT SCALE DRAWING**

THIS DOCUMENT CONTAINS PROPRIETARY INFORMATION AND SUCH INFORMATION MAY NOT BE DISCLOSED TO OTHERS FOR ANY PURPOSE OR USED FOR MANUFACTURING PUPOSES WITHOUT PERMISSION FROM AMPHENOL CANADA CORP.

UNLESS OTHERWISE SPECIFIED DIMENSIONS ARE IN MILLIMETERS TOLERANCES ARE:  DECIMALS      ANGLES X.X ± 0.15      ± 0.5° X.XX ± 0.10	<b>APPROVALS</b>	<b>DATE</b>	<b>Amphenol Canada Corp.</b>  TITLE <b>QSPF CAGE ASSEMBLY</b>
	DRAWN M.LONG	DEC04/06	
	DESIGNED M.LONG	DEC04/06	
	CHECKED J.SI	DEC04/06	
MATERIAL AND FINISH SEE NOTE 1	QA APPD		
REF.	IE APPD		
CODE IDENT. NO. 03554	DWG APPD A.GREEN	DEC04/06	SIZE A3 DWG. NO. P-U90-A1X1-1X0X SCALE 5:2 PROJECT SHEET 2 OF 4

REVISIONS				
REV.	ECN	DESCRIPTION	DATE	APPROVED
G		SEE SHEET 1	SEP 18/09	ZLJ



**RECOMMENDED BELLY-TO-BELLY PCB BOARD LAYOUT  
(COMPONENT SIDE OF BOARD)**

**NOTES:**

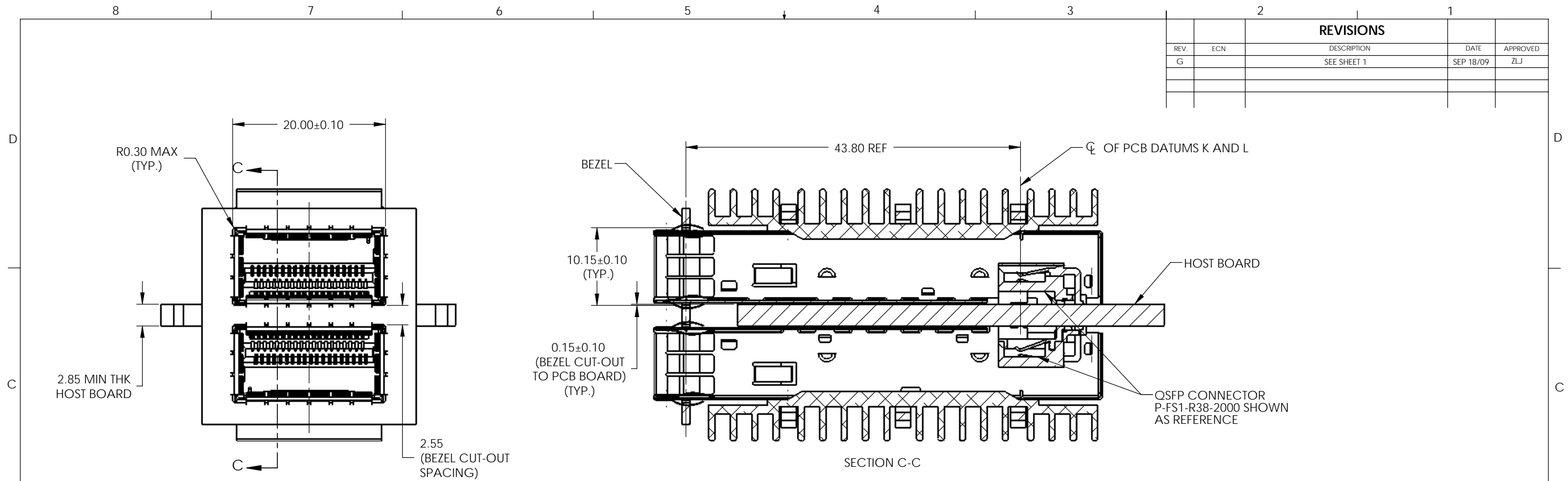
- DATUMS X AND Y ESTABLISHED BY CUSTOMER'S FUDUCIAL.
- LOCATION OF EDGE OF PCB IS APPLICATION SPECIFIC.
- FINISHED HOLE SIZE.

**DO NOT SCALE DRAWING**

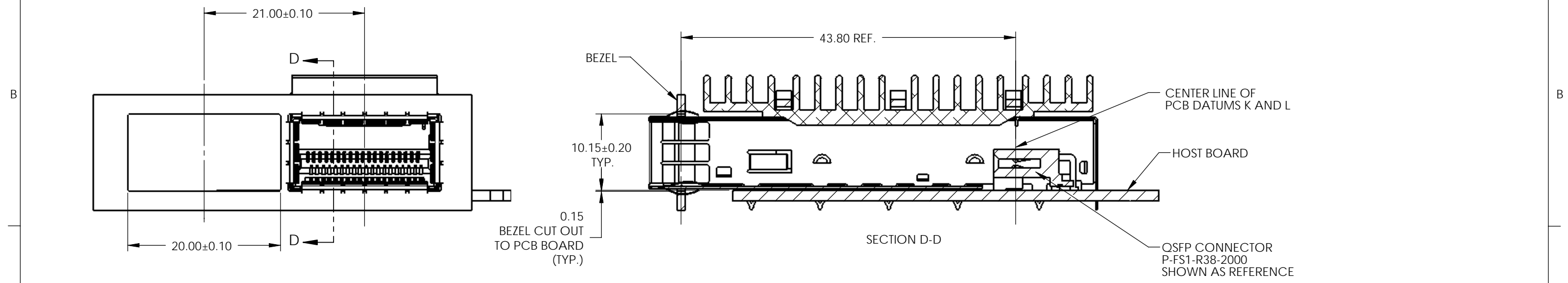
THIS DOCUMENT CONTAINS PROPRIETARY INFORMATION AND SUCH INFORMATION MAY NOT BE DISCLOSED TO OTHERS FOR ANY PURPOSE OR USED FOR MANUFACTURING PUPOSES WITHOUT PERMISSION FROM AMPHENOL CANADA CORP.

UNLESS OTHERWISE SPECIFIED DIMENSIONS ARE IN MILLIMETERS TOLERANCES ARE:		<b>APPROVALS</b>		<b>DATE</b>		<b>Amphenol Canada Corp.</b>	
DECIMALS	ANGLES	DRAWN	M.LONG	DEC04/06	TITLE		
X.X ± 0.15	± 0.5°	DESIGNED	M.LONG	DEC04/06	OSFP CAGE ASSEMBLY		REV.
X.XX ± 0.10		CHECKED	J.SI	DEC04/06			G
MATERIAL AND FINISH		QA APPD				SIZE	DWG. NO.
SEE NOTE 1		IE APPD				A3	P-U90-A1X1-1X0X
REF.		DWG APPD		DEC04/06	SCALE	5:2	PROJECT
CODE IDENT. NO.	03554	A.GREEN			SHEET		3 OF 4

REVISIONS				
REV.	ECN	DESCRIPTION	DATE	APPROVED
G		SEE SHEET 1	SEP 18/09	ZLJ



RECOMMENDED BELLY-TO-BELLY MOUNTING DESIGN



RECOMMENDED SINGLE SIDED MOUNTING DESIGN

**DO NOT SCALE DRAWING**

THIS DOCUMENT CONTAINS PROPRIETARY INFORMATION AND SUCH INFORMATION MAY NOT BE DISCLOSED TO OTHERS FOR ANY PURPOSE OR USED FOR MANUFACTURING PUPOSES WITHOUT PERMISSION FROM AMPHENOL CANADA CORP.

UNLESS OTHERWISE SPECIFIED DIMENSIONS ARE IN MILLIMETERS TOLERANCES ARE: DECIMALS      ANGLES X.X ± 0.15      ± 0.5° X.XX ± 0.10	<b>APPROVALS</b>	<b>DATE</b>	<b>Amphenol Canada Corp.</b> TITLE <b>QSFP CAGE ASSEMBLY</b>	
	DRAWN M.LONG	DEC04/06		
	DESIGNED M.LONG	DEC04/06		
	CHECKED J.SI	DEC04/06		
MATERIAL AND FINISH SEE NOTE 1	QA APPD		SIZE A3	DWG. NO P-U90-A1X1-1X0X
REF.	IE APPD		SCALE 2:1	PROJECT
CODE IDENT. NO. 03554	DWG APPD A.GREEN	DEC04/06	SHEET 4 OF 4	REV. G