

MATERIAL:

CAGE:

COPPER ALLOY

PLATING: 2.54um MIN. NICKEL

HEATSINK:

ALUMINUM

PLATING: NICKEL

HEATSINK CLIP:

STAINLESS STEEL

PACKAGING:

TRAY PACKAGING

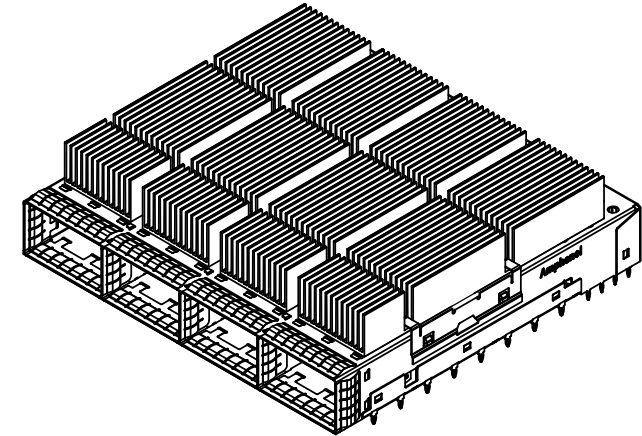
AMPHENOL PART NUMBER: UE62-B462G-021E1

(CAGE DESIGNED GOOD FOR B-B APPLICATION)

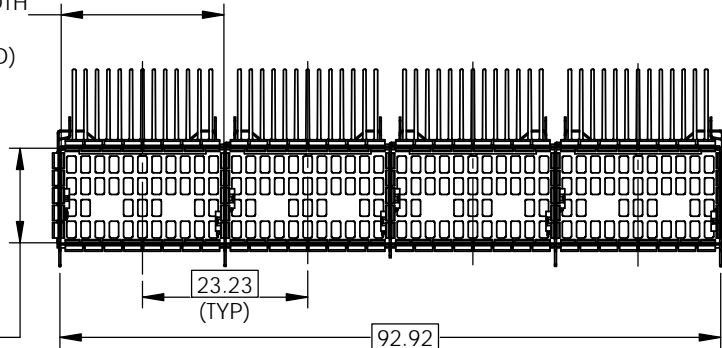


REVISIONS

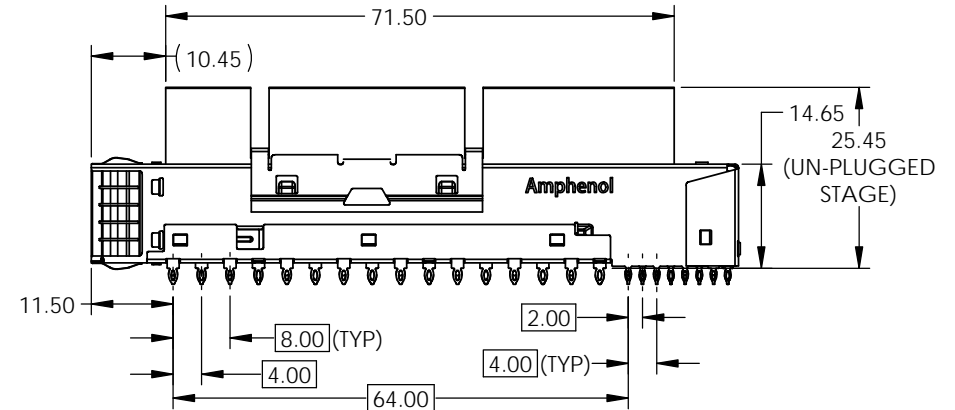
REV.	ECN	DESCRIPTION	DATE	APPROVED
A		PROTOTYPE	X	
B		PRODUCTION WITH HARD TOOLING	NOV03/20	



22.88±0.10(TYP)
(PORT INTERNAL WIDTH
WITH EMI FINGERS
FULLY COMPRESSED)



13.30±0.10(TYP)
(PORT INTERNAL HEIGHT
WITH EMI FINGERS
FULLY COMPRESSED)



DO NOT SCALE DRAWING

THIS DOCUMENT CONTAINS PROPRIETARY INFORMATION AND SUCH INFORMATION MAY NOT BE DISCLOSED TO OTHERS FOR ANY PURPOSE OR USED FOR MANUFACTURING PURPOSES WITHOUT PERMISSION FROM AMPHENOL CANADA CORP.

UNLESS OTHERWISE SPECIFIED
DIMENSIONS ARE IN MILLIMETERS
TOLERANCES ARE:

DECIMALS ANGLES
X.X ± 0.25 ± 1°
X.XX ± 0.15

MATERIAL AND FINISH

SEE NOTES

REF.

X

CODE IDENT. NO.

03554

APPROVALS

DRAWN J.SI

DESIGNED

CHECKED X

QA APP'D

IE APP'D

DWG APP'D

DATE

JUN26/20

X

Amphenol High Speed Interconnects

A Division of Amphenol Corp. www.amphenol-highspeed.com

TITLE

1X4 OSFP CAGE ASSEMBLY
WITH ADDITIONAL RHS

SIZE
A4

DWG. NO.
P-UE62-B462G-021E1

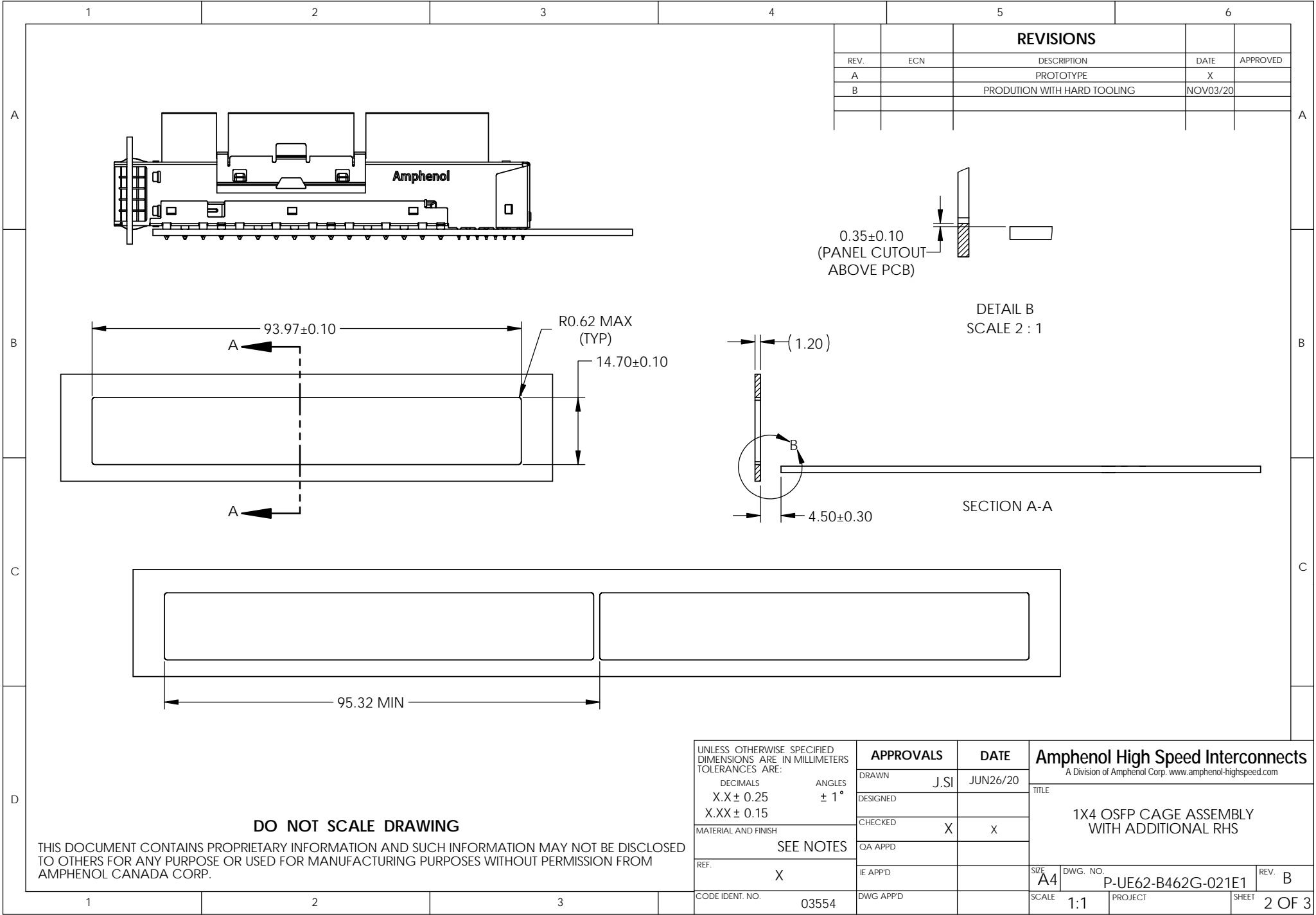
SCALE
1:1

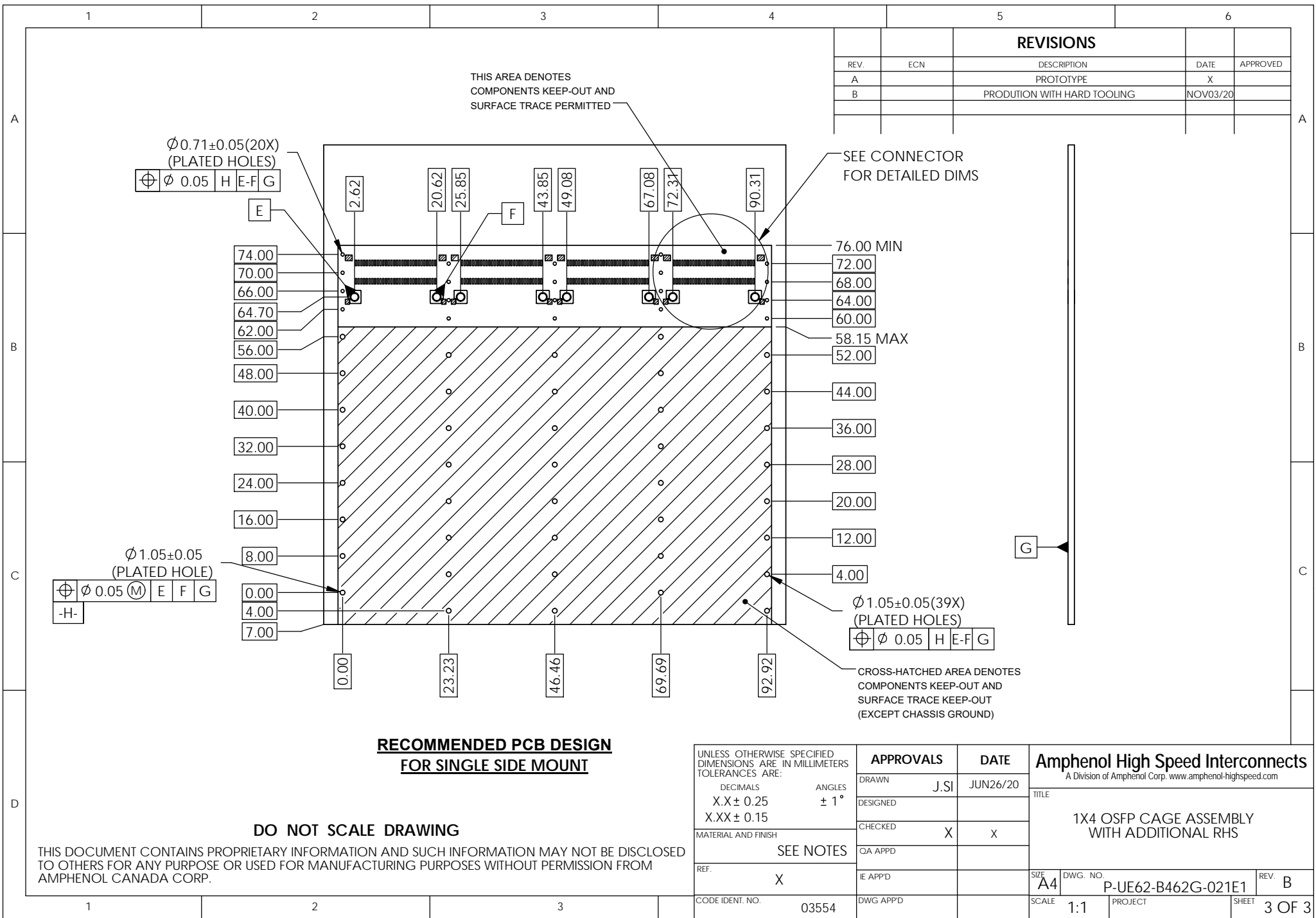
PROJECT

SHEET

1 OF 3

REV.
B





REVISIONS				
REV.	ECN	DESCRIPTION	DATE	APPROVED
A		PROTOTYPE	X	
B		PRODUCTION WITH HARD TOOLING	NOV03/20	

**RECOMMENDED PCB DESIGN
FOR SINGLE SIDE MOUNT**

DO NOT SCALE DRAWING

THIS DOCUMENT CONTAINS PROPRIETARY INFORMATION AND SUCH INFORMATION MAY NOT BE DISCLOSED TO OTHERS FOR ANY PURPOSE OR USED FOR MANUFACTURING PURPOSES WITHOUT PERMISSION FROM AMPHENOL CANADA CORP.

UNLESS OTHERWISE SPECIFIED DIMENSIONS ARE IN MILLIMETERS TOLERANCES ARE: DECIMALS ANGLES X.X ± 0.25 ± 1° X.XX ± 0.15		APPROVALS		DATE		Amphenol High Speed Interconnects A Division of Amphenol Corp. www.amphenol-highspeed.com											
		DRAWN		J.SI	JUN26/20		TITLE 1X4 OSFP CAGE ASSEMBLY WITH ADDITIONAL RHS										
		DESIGNED															
		CHECKED		X	X												
MATERIAL AND FINISH		QA APPD				SIZE A4											
SEE NOTES		IE APPD															
REF.		X				DWG. NO.		P-UE62-B462G-021E1		REV. B							
CODE IDENT. NO.		03554		DWG APPD				SCALE		1:1		PROJECT		SHEET		3 OF 3	