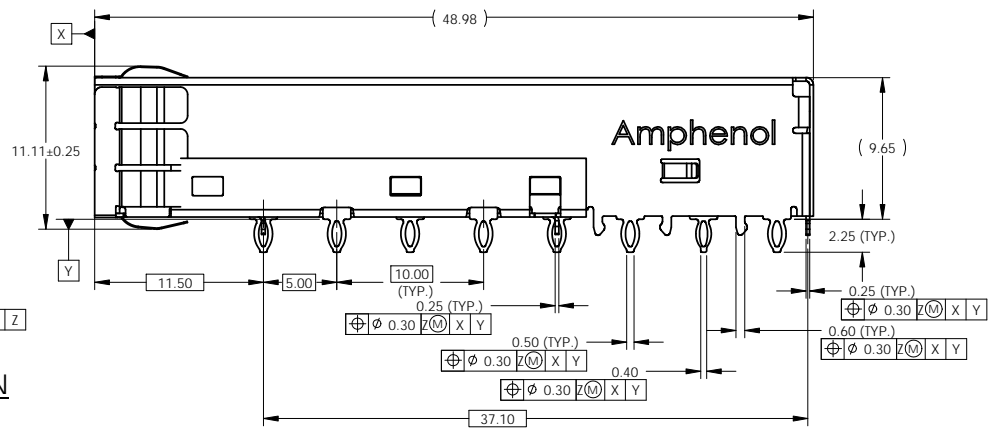
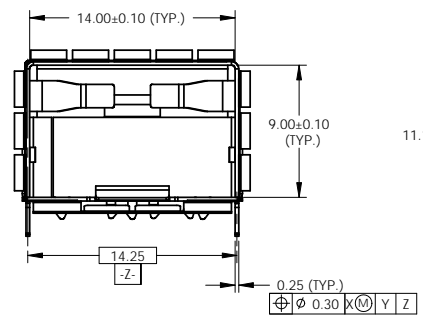
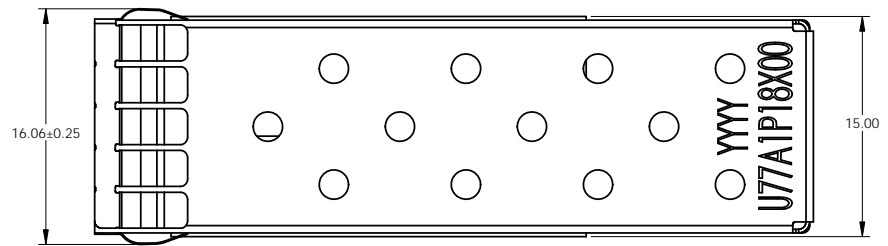
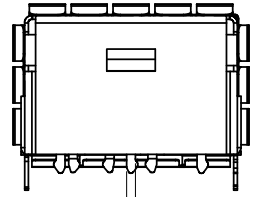
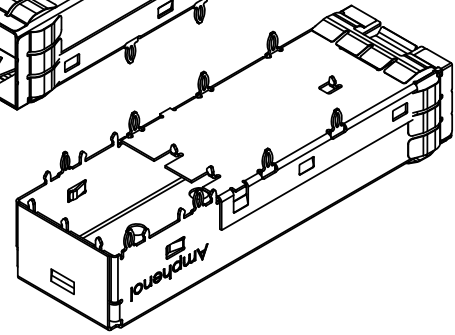
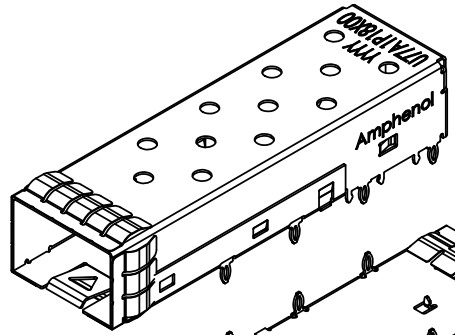


REVISIONS				
REV	ECN	DESCRIPTION	DATE	APPROVED
A		PROPOSAL	MAY 17, 19	J.SI



**MATERIAL:**  
 CAGE: COPPER ALLOY.  
**PLATING:**  
 PLATING OPTION 2: 2.54 μm [100 μ"] NICKEL PLATING.  
 PLATING OPTION 3: 2.54 - 7.62 μm [100 - 300 μ"] MATTE TIN PLATING OVER 1.27 μm [50 μ"] NICKEL.  
**PACKAGING:** TRAY PACKAGING OR T&R PACKAGING  
**TEMPERATURE RANGE:** -40°C TO +85°C.



**AMPHENOL PART NUMBER CONFIGURATION**

U 7 7 - A 1 P 1 8 - X 0 0 X

**CAGE PLATING:**  
 2 = NICKEL  
 3 = MATTE TIN

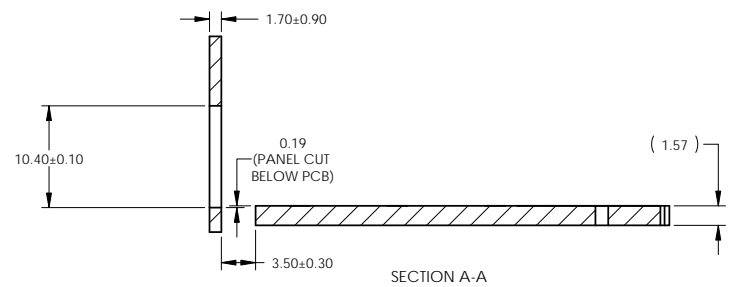
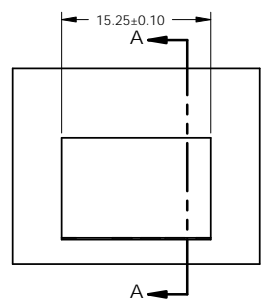
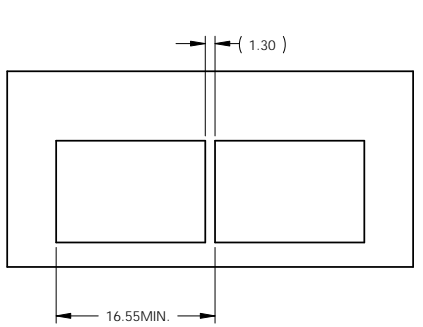
**PACKAGING:**  
 1 = TRAY PACKAGING  
 T = T&R PACKAGING

**DO NOT SCALE DRAWING**

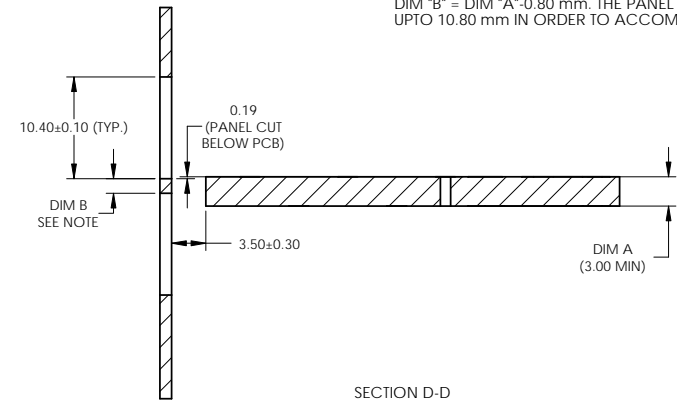
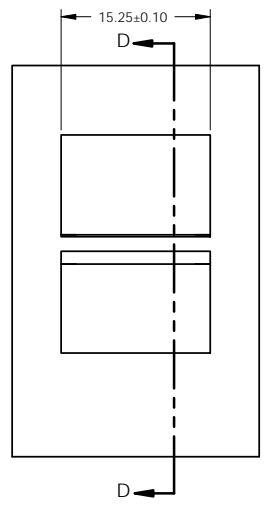
THIS DOCUMENT CONTAINS PROPRIETARY INFORMATION AND SUCH INFORMATION MAY NOT BE DISCLOSED TO OTHERS FOR ANY PURPOSE OR USED FOR MANUFACTURING PURPOSES WITHOUT PERMISSION FROM AMPHENOL CANADA CORP.

UNLESS OTHERWISE SPECIFIED DIMENSIONS ARE IN MILLIMETERS TOLERANCES ARE: DECIMALS ANGLES X.X ± 0.25 ± 1° X.XX ± 0.15	<b>APPROVALS</b>	<b>DATE</b>	<b>Amphenol High Speed Interconnects</b> A Division of Amphenol Corp. www.amphenolhighspeed.com	
	DRAWN Hank.A	MAY 17, 19	TITLE	
	DESIGNED		1X1SFP+ CAGE EMI SPRING FINGERS	
	CHECKED Chigow.X	MAY 17, 19		
MATERIAL AND FINISH SEE NOTE 1 ON PAGE 1	QA APPD			
REF.	E APPD		SIZE A3	DWG. NO. P-U77-A1P18-X00X
CODE IDENT NO. 03554	DWG APPD J.SI	MAY 17, 19	SCALE 2:1	PROJECT SHEET 1 OF 4

REVISIONS				
REV	ECN	DESCRIPTION	DATE	APPROVED
A		PROPOSAL	MAY 17, 19	J.SI



**RECOMMENDED BEZEL DESIGN  
(SINGLE SIDE CAGE MOUNT)**



NOTE:  
PANEL CUTOUT SIZES PER SFF 8433 SPEC. FOR BELLY TO BELLY MOUNTING,  
DIM "A" (PCB THICKNESS) IS 3.0 mm MIN. DIM "B" RELATED TO DIM "A". FOR  
DIM "B" = DIM "A" - 0.80 mm. THE PANEL CUTOUT 10.40 mm MIGHT BE INCREASED  
UPTO 10.80 mm IN ORDER TO ACCOMMODATE PCB TOLERANCE.

**RECOMMENDED BEZEL DESIGN  
(BELLY-TO-BELLY CAGE MOUNT)**

**DO NOT SCALE DRAWING**

THIS DOCUMENT CONTAINS PROPRIETARY INFORMATION AND SUCH INFORMATION MAY NOT BE DISCLOSED TO OTHERS FOR ANY PURPOSE OR USED FOR MANUFACTURING PURPOSES WITHOUT PERMISSION FROM AMPHENOL CANADA CORP.

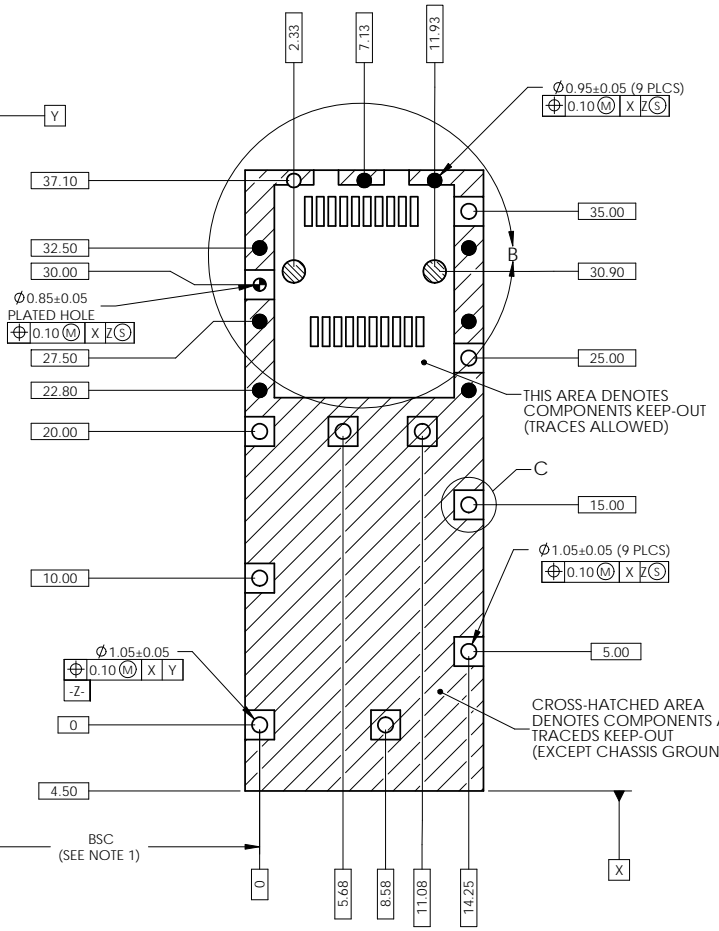
UNLESS OTHERWISE SPECIFIED DIMENSIONS ARE IN MILLIMETERS TOLERANCES ARE: DECIMALS X.X ± 0.25 X.XX ± 0.15 MATERIAL AND FINISH SEE NOTE 1 ON PAGE 1 REF.	APPROVALS	DATE	Amphenol High Speed Interconnects A Division of Amphenol Corp. www.amphenolhighspeed.com	
	DRAWN Hank.A	MAY 17, 19	TITLE	1X1SFP+ CAGE EMI SPRING FINGERS
	DESIGNED			
	CHECKED Chigow.X	MAY 17, 19		
	QA APPD			
	E APPD		SIZE A3	DWG. NO. P-U77-A1P18-X00X
CODE IDENT NO. 03554	DWG APPD J.SI	MAY 17, 19	SCALE 2:1	PROJECT SHEET 1 OF 4

- NOTES:  
 1. DATUM AND BASIC DIMENSIONS ESTABLISHED BY CUSTOMER.  
 2. PADS AND VIAS ARE CHASSIS GROUND.  
 3. THRU-HOLES PLATING OPTIONAL.  
 4. SEE DRAWING P-U76-A20-X00XX FOR CONNECTOR LAYOUT.

HOLE SIZES

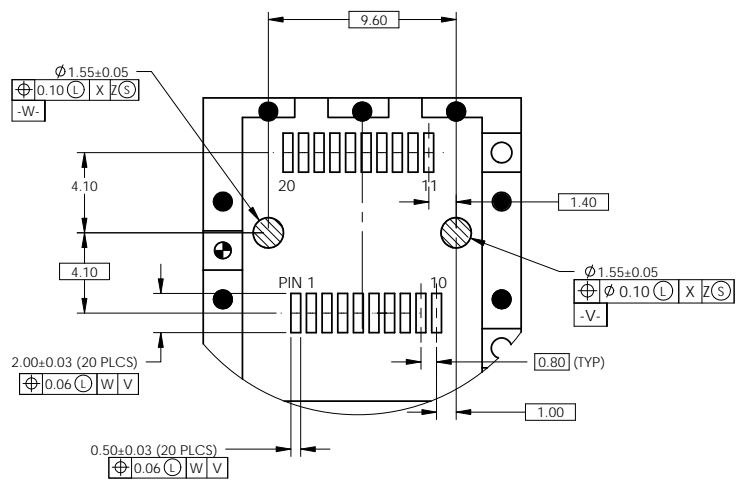
- $\phi 1.55$
- $\phi 1.05$
- $\phi 0.95$
- $\phi 0.85$

REVISIONS				
REV	ECN	DESCRIPTION	DATE	APPROVED
A		PROPOSAL	MAY 17, 19	J.SI

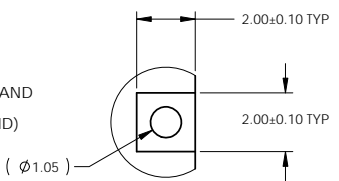


THIS AREA DENOTES COMPONENTS KEEP-OUT (TRACES ALLOWED)

CROSS-HATCHED AREA DENOTES COMPONENTS AND TRACES KEEP-OUT (EXCEPT CHASSIS GROUND)



DETAIL B  
SCALE 4 : 1



DETAIL C  
SCALE 6 : 1

**RECOMMENDED SFP+ HOST PCB LAYOUT**  
**SINGLE SIDE CAGE MOUNTING**





DO NOT SCALE DRAWING

THIS DOCUMENT CONTAINS PROPRIETARY INFORMATION AND SUCH INFORMATION MAY NOT BE DISCLOSED TO OTHERS FOR ANY PURPOSE OR USED FOR MANUFACTURING PURPOSES WITHOUT PERMISSION FROM AMPHENOL CANADA CORP.

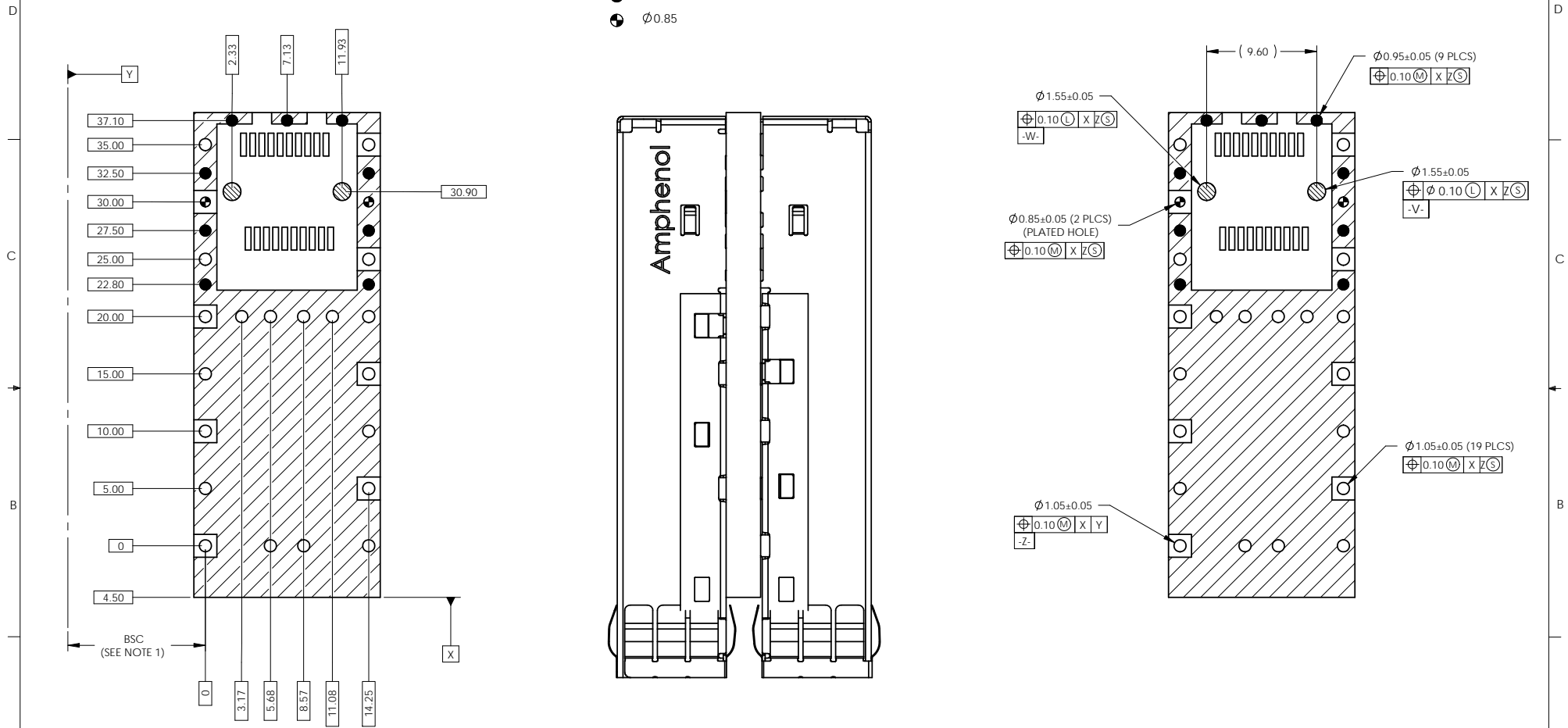
UNLESS OTHERWISE SPECIFIED DIMENSIONS ARE IN MILLIMETERS TOLERANCES ARE: DECIMALS ANGLES X.X ± 0.25 ± 1° X.XX ± 0.15	APPROVALS	DATE	Amphenol High Speed Interconnects A Division of Amphenol Corp. www.amphenol-highspeed.com	
	DRAWN Hank.A	MAY 17, 19	TITLE	1X1SFP+ CAGE EMI SPRING FINGERS
MATERIAL AND FINISH SEE NOTE 1 ON PAGE 1	CHECKED Chigow.X	MAY 17, 19	SCALE	2:1
REF.	E APPD		SIZE A3	DWG. NO. P-U77-A1P18-X00X
CODE IDENT NO. 03554	DWG APPD J.SI	MAY 17, 19	PROJECT	SHEET 1 OF 4

- NOTES:  
 1. DATUM AND BASIC DIMENSIONS ESTABLISHED BY CUSTOMER.  
 2. PADS AND VIAS ARE CHASSIS GROUND.  
 3. THRU-HOLES PLATING OPTIONAL.  
 4. SEE DRAWING P-U76-A20-X00XX FOR CONNECTOR LAYOUT.

HOLE SIZES

-   $\varnothing 1.55$
-   $\varnothing 1.05$
-   $\varnothing 0.95$
-   $\varnothing 0.85$

REVISIONS				
REV	ECN	DESCRIPTION	DATE	APPROVED
A		PROPOSAL	MAY 17, 19	J.SI



**RECOMMENDED SFP+ HOST PCB LAYOUT  
(BELLY-TO-BELLY CAGE MOUNTING)**

DO NOT SCALE DRAWING

THIS DOCUMENT CONTAINS PROPRIETARY INFORMATION AND SUCH INFORMATION MAY NOT BE DISCLOSED TO OTHERS FOR ANY PURPOSE OR USED FOR MANUFACTURING PURPOSES WITHOUT PERMISSION FROM AMPHENOL CANADA CORP.

UNLESS OTHERWISE SPECIFIED DIMENSIONS ARE IN MILLIMETERS TOLERANCES ARE: DECIMALS ANGLES X.X ± 0.25 ± 1° X.XX ± 0.15	<b>APPROVALS</b>	<b>DATE</b>	<b>Amphenol High Speed Interconnects</b> A Division of Amphenol Corp. www.amphenolhighspeed.com	
	DRAWN Hank.A	MAY 17, 19	TITLE	
MATERIAL AND FINISH SEE NOTE 1 ON PAGE 1	DESIGNED		1X1SFP+ CAGE EMI SPRING FINGERS	
REF.	CHECKED Chigow.X	MAY 17, 19	DRAWN	
CODE IDENT NO. 03554	QA APPD		SIZE A3	DWG. NO. P-U77-A1P18-X00X
	DWG APPD J.SI	MAY 17, 19	SCALE 2:1	PROJECT
				SHEET 1 OF 4