

**• ELECTRICAL CHARACTERISTICS**

Contact Current Rating: 1 Amp  
 Dielectric Withstanding Voltage: 500V AC  
 Insulation Resistance: 500M /Min  
 Contact Resistance: 35m /Max  
 Operation Temperature: -55°C ~ +105°C

**• PART NO.:**

HJ1KX X140

DIM "A" / OD

A:φ6.7 / 6.0~6.5  
 B:φ7.7 / 7.0~7.5  
 C:φ8.7 / 8.0~8.5  
 D:φ6.9 / 6.5~6.8

**COLOR:**

R:BLACK  
 U:BEIGE  
 W:WHITE  
 6:425C

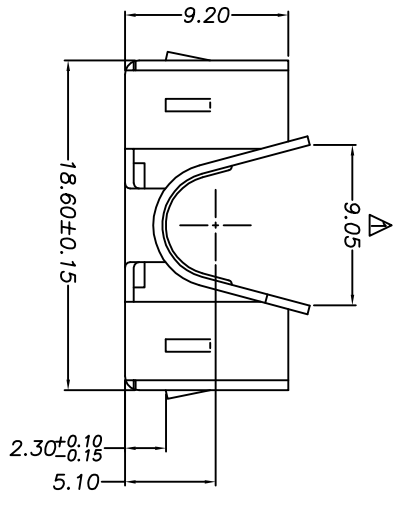
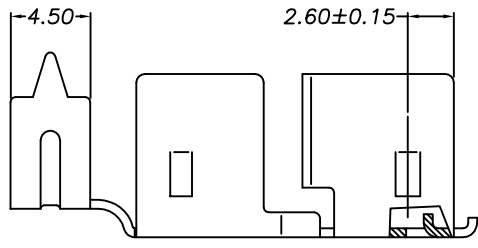
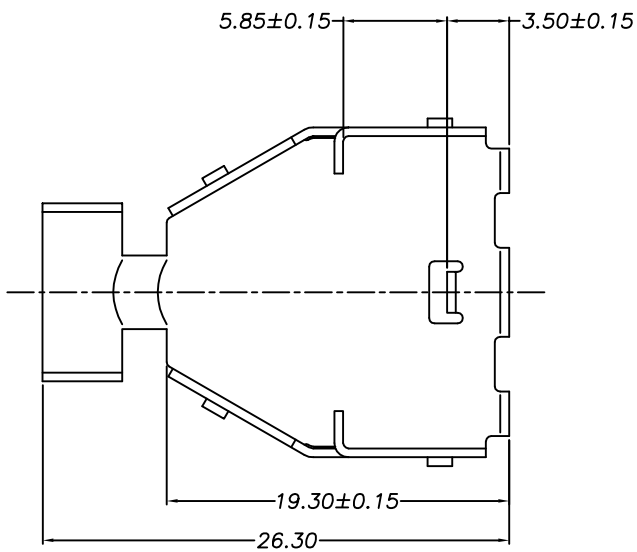
ITEM	DESC.	MATERIAL	COLOR:SEE NOTE	REMARKS	PART REMARKS
1	HOOD	ABS			

NAME:	SCSI 14P ABS Hood	PART NO.	HJ1KX X140
-------	-------------------	----------	------------

REV:	E	UNIT:	mm	DRW BY	CHK BY	APP BY	DRAWING NO.
SCALE:	N:1	DATE:	2012/11/22	DAWN HU	KING ZHOU		HJ1-001

东莞市箐国电子有限公司

QUALITY SYMBOLS		Tolerance		NAME: SCSI 14P ABS Hood		PART NO. HJ1KX X140	
□ :	CRITICAL	X :	±0.50	REV:	E	UNIT:	mm
⊘ :	MAJOR	x :	±0.30	SCALE:	N:1	DATE:	2012/11/22
∇ :	ZERO DEFECT	.xx :	±0.15				
APPROVER		DRAWING NO.		DAWN HU		KING ZHOU	
DATE		DESCRIPTION		2002/07/05		新版发行	



**• ELECTRICAL CHARACTERISTICS**

- Contact Current Rating: 1 Amp
- Dielectric Withstanding Voltage: 500V AC
- Insulation Resistance: 500MΩ/Min
- Contact Resistance: 35mΩ/Max
- Operation Temperature: -55°C ~ +105°C

SJ1S2014X0

LOWER COVER PLATING  
 B:NI 100u"  
 M:G/F

1	LOWER COVER	SPOC (T=0.50mm)	PLATING: SEE P/N	PART REMARKS
ITEM	DESC.	MATERIAL	REMARKS	PART REMARKS

NAME:	SCSI 14P MALE 铆合下盖 (客户用图)			
REV:	E	UNIT:	mm	DRW BY: DAWN HU
SCALE:	N:1	DATE:	2012/11/22	CHK BY: KING ZHOU
APP BY:	DAWN HU	APP BY:	KING ZHOU	DRAWING NO. SJ1-001

东莞市箐国电子有限公司

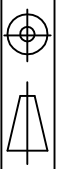
**QUALITY SYMBOLS**

- : CRITICAL
- ⊠: MAJOR

- : TOLERANCE
- ⊕: ZERO DEFECT
- S.P.C

**Tolerance**

- x. @0.50
- .x @0.30
- .xx ±0.15



2014/06/13 修正REMARKS描述

2012/11/22 修正材质描述

2002/07/05 新版发行

King Zhou

King Zhou

DAWN HU

APPROVER

DESCRIPTION

DATE

SIDE

8

7

6

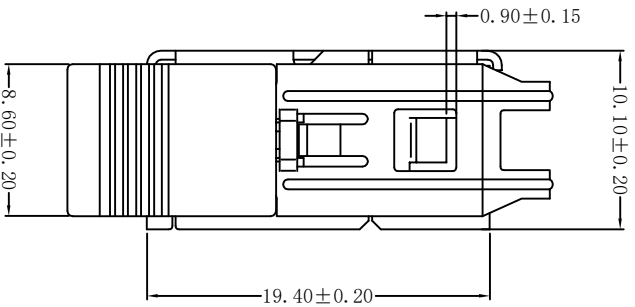
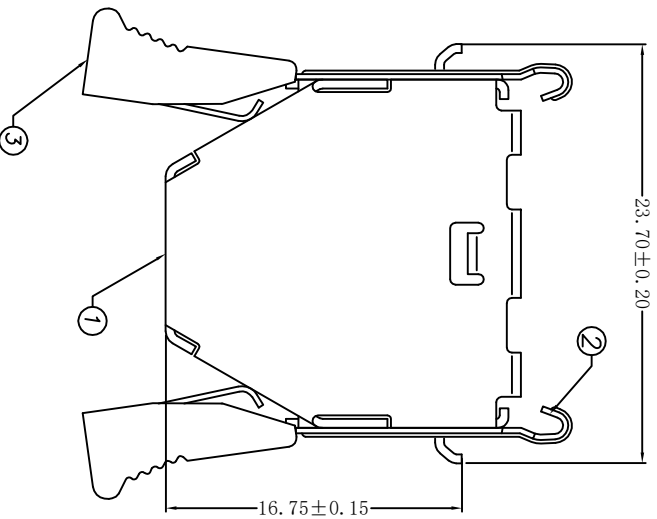
5

4

3

2

1



**△ • ELECTRICAL CHARACTERISTICS**

Contact Current Rating: 1 Amp  
 Dielectric Withstanding Voltage: 500V AC  
 Insulation Resistance: 500MΩ/Min  
 Contact Resistance: 35mΩ/Max  
 Operation Temperature: -55°C ~ +105°C

• PART NO.:

BJ1X X014X0

WRENCH SPRING LEEF PLATING  
 O:WITHOUT  
 M:G/F

WRENCH HOUSING COLOR:

C:BLACK  
 G:BEIGE  
 L:WHITE  
 Z:425C

UPPER COVER PLATING

B:Ni 100u"  
 M:G/F

1	UPPER COVER	STEEL (T=0.50mm)	PLATING:SEE NOTE	
2	WRENCH SPRING LEEF	STEEL(T=0.30mm)	PLATING:SEE NOTE	
3	WRENCH HOUSING	ABS	COLOR:SEE NOTE	
ITEM	DESC.	MATERIAL	REMARKS	PART REMARKS

NAME: SCS1 14P MALE 柳合上盖+扳手(鱼钩) PART NO. BJ1X X014X0

REV: E UNIT: mm DRW BY: KING ZHOU APP BY: BJ1-001

SCALE: N:1 DATE: 2012/11/22 DAWN HU

东莞市箐国电子有限公司

QUALITY SYMBOLS	□ :	☒ :
CRITICAL	MAJOR	
▽ :	▽ :	
ZERO DEFECT	S.P.C	
Tolerance	X. : ±0.50	⊕ : ±0.30
	.X : ±0.15	.XX : ±0.15
	⊙	∠

DATE	DESCRIPTION	APPROVER	ZERO DEFECT	S.P.C
2002/07/05 新版发行		DAWN HU		
8	7	6	5	4
8	7	6	5	4
8	7	6	5	4