

REVISIONS			
REV	DESCRIPTION, ECN, EAR NO.	DATE	APP'D
B	MODIFIED PART NUMBER TREE	MAR31/15	AS
C	ADDED BELLY-TO-BELLY DETAILS	APR23/15	CM

**AMPHENOL PART NUMBER CONFIGURATION**

U98 - C 2 X X - X 0 X X

**HEAT SINK OPTION**

- 1 = NO HEAT SINK SHIPPED
- 2 = STANDARD HEAT SINK (HARD COAT ANODIZED) (H=14.00mm)
- M = FIN STYLE, MATING AXIS ORIENTATION HEAT SINK (HARD COAT ANODIZED) (H=14.00mm)

**INSULATING TAPE OPTION**

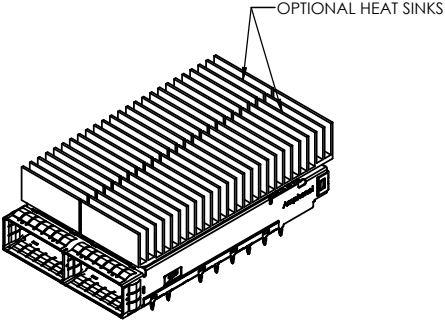
- 1 = STANDARD (NO INSULATING TAPE)
- 2 = WITH INSULATING TAPE ON BOTTOM CAGE

- PACKAGING**  
1 = TRAY PACKAGING

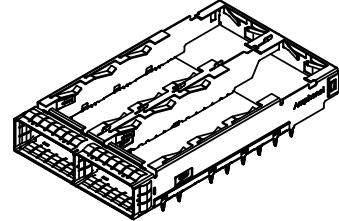
- CONNECTOR COVER & KICKOUT SPRING**  
B = WITHOUT CONNECTOR COVER, WITH KICKOUT SPRING  
C = WITH CONNECTOR COVER, WITH KICKOUT SPRING

**PLATING**

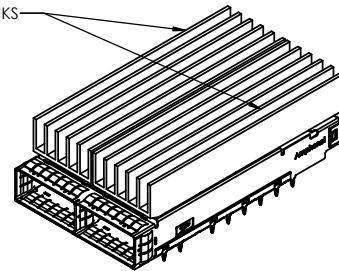
- 1 = NICKEL



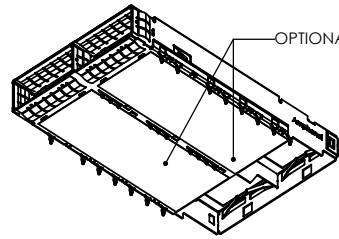
VIEW OF CAGE ASSEMBLY WITH STANDARD HEAT SINK WITHOUT CONNECTOR COVER (U98-C221-10B1)



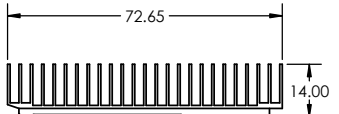
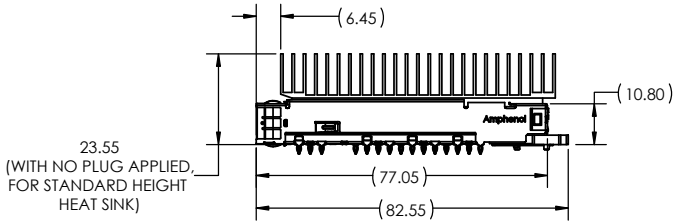
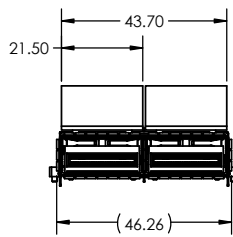
VIEW OF CAGE ASSEMBLY WITHOUT HEAT SINK AND WITHOUT CONNECTOR COVER (U98-C211-10B1)



VIEW OF CAGE ASSEMBLY WITH FIN STYLE MATING AXIS ORIENTATION HEAT SINK WITHOUT CONNECTOR COVER (U98-C2M1-10B1)



VIEW OF CAGE ASSEMBLY WITHOUT HEAT SINK AND WITHOUT CONNECTOR COVER, INCLUDING INSULATING TAPE OPTION (U98-C212-10B1)



VIEW OF STANDARD HEATSINK

**NOTES:**

1. CAGE AND EMI SPRINGS MATERIAL: COPPER ALLOY  
HEAT SINK MATERIAL: ALUMINUM  
CONNECTOR COVER: ZINC ALLOY  
CAGE PLATING: 3.81µm (100µin) MIN. NICKEL
2. CAGE IS INTENDED TO BE COMPLIANT WITH THE CFP4 TRANSCEIVER SPECIFICATION.



UNLESS SPECIFIED OTHERWISE	DRAWN	A.SMITH	AUG28/14
PRIMARY UNITS INCHES	CHECKED	C. MICHLIK	SEP12/14
SECONDARY MILLIMETERS	M.E. APP'D		
REFERENCE IN PARENTHESES	Q.A. APP'D		
GENERAL TOLERANCES	DWG APP'D	C.MICHLIK	SEP12/14
1 DECIMAL PLACE ±0.15	ENG. REL. NO.	TBD	
2 DECIMAL PLACES ±0.10	REF.		
3 DECIMAL PLACES ±0.050	THIRD ANGLE PROJECTION		
ANGULAR DEGREES ±1°	DO NOT SCALE DRAWING		

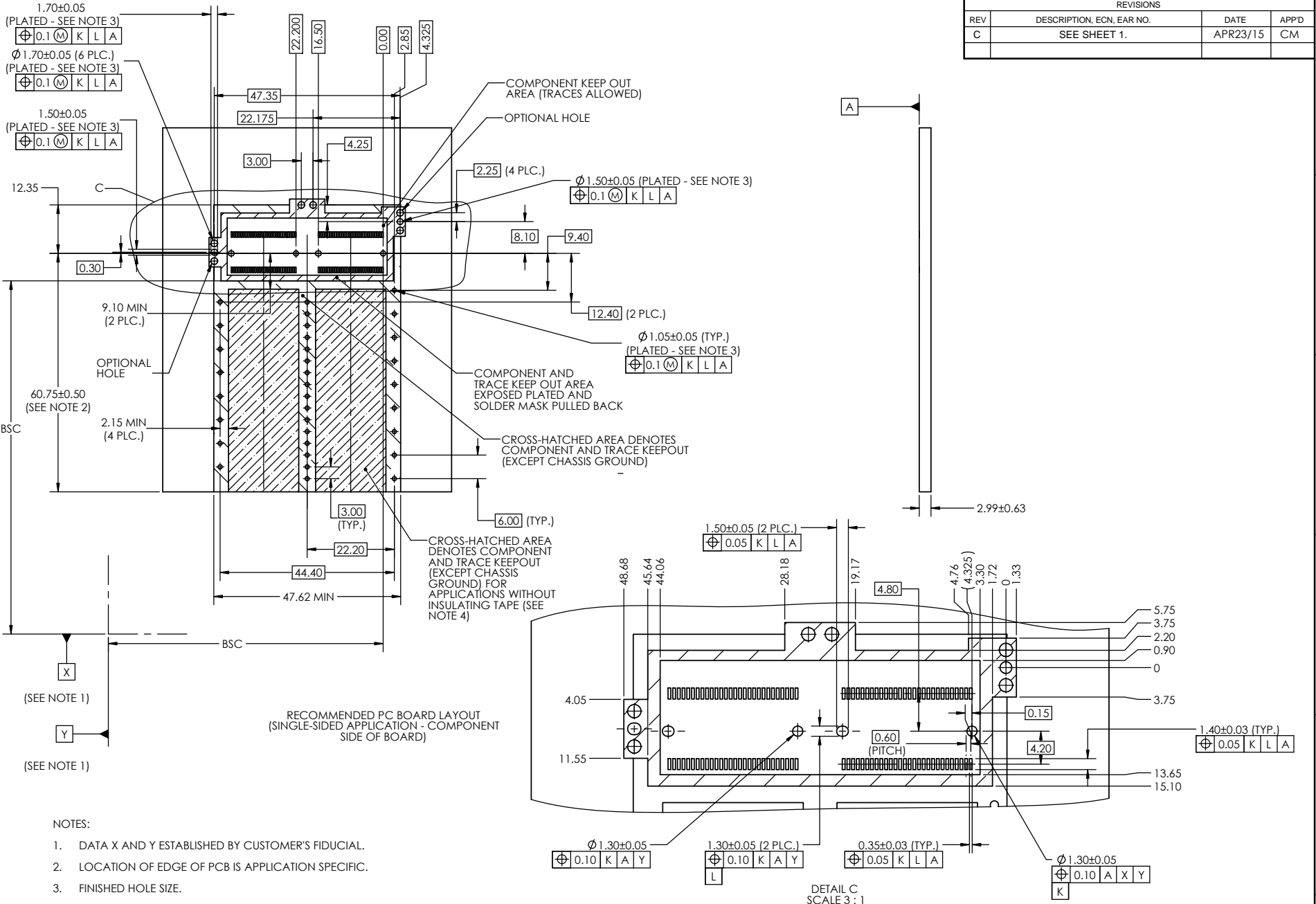
**Amphenol High Speed Interconnects**  
A Division of Amphenol Corp. [www.amphenol-highspeed.com](http://www.amphenol-highspeed.com)

**CFP4 2 PORT CAGE ASSEMBLY WITH PRESS FIT PINS**

DWG. NO. **P-U98-C2XX-X0XX** REV **C**

CODE ID NO. 03554 | DWG SIZE: C | SCALE: 1:1 | SHEET 1 OF 4

REVISIONS			
REV	DESCRIPTION, ECN, EAR NO.	DATE	APP'D
C	SEE SHEET 1.	APR23/15	CM



- NOTES:
- DATA X AND Y ESTABLISHED BY CUSTOMER'S FIDUCIAL.
  - LOCATION OF EDGE OF PCB IS APPLICATION SPECIFIC.
  - FINISHED HOLE SIZE.
  - COMPONENTS AND TRACES IN INDICATED AREA ARE ONLY ALLOWED FOR APPLICATIONS WITH INSULATING TAPE.

RECOMMENDED PC BOARD LAYOUT  
(SINGLE-SIDED APPLICATION - COMPONENT SIDE OF BOARD)



UNLESS SPECIFIED OTHERWISE	DRAWN	A.SMITH	AUG28/14
PRIMARY UNITS INCHES	CHECKED	C. MICHLIK	SEP12/14
SECONDARY MILLIMETERS	M.E. APP'D		
REFERENCE IN PARENTHESES	Q.A. APP'D		
GENERAL TOLERANCES	DWG APP'D	C.MICHLIK	SEP12/14
1 DECIMAL PLACE ±0.15	ENG. REL. NO.	TBD	
2 DECIMAL PLACES ±0.10	REF.		
3 DECIMAL PLACES ±0.050	THIRD ANGLE PROJECTION		
ANGULAR DEGREES ±1°			

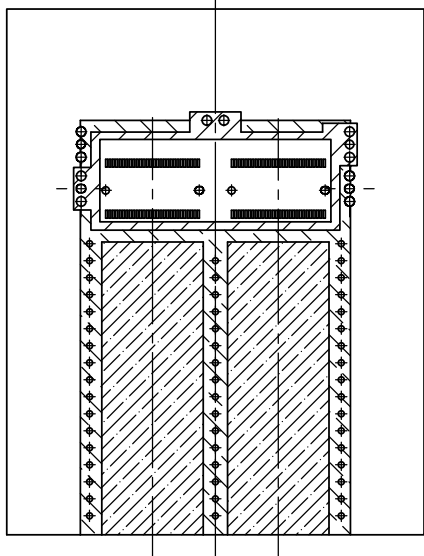
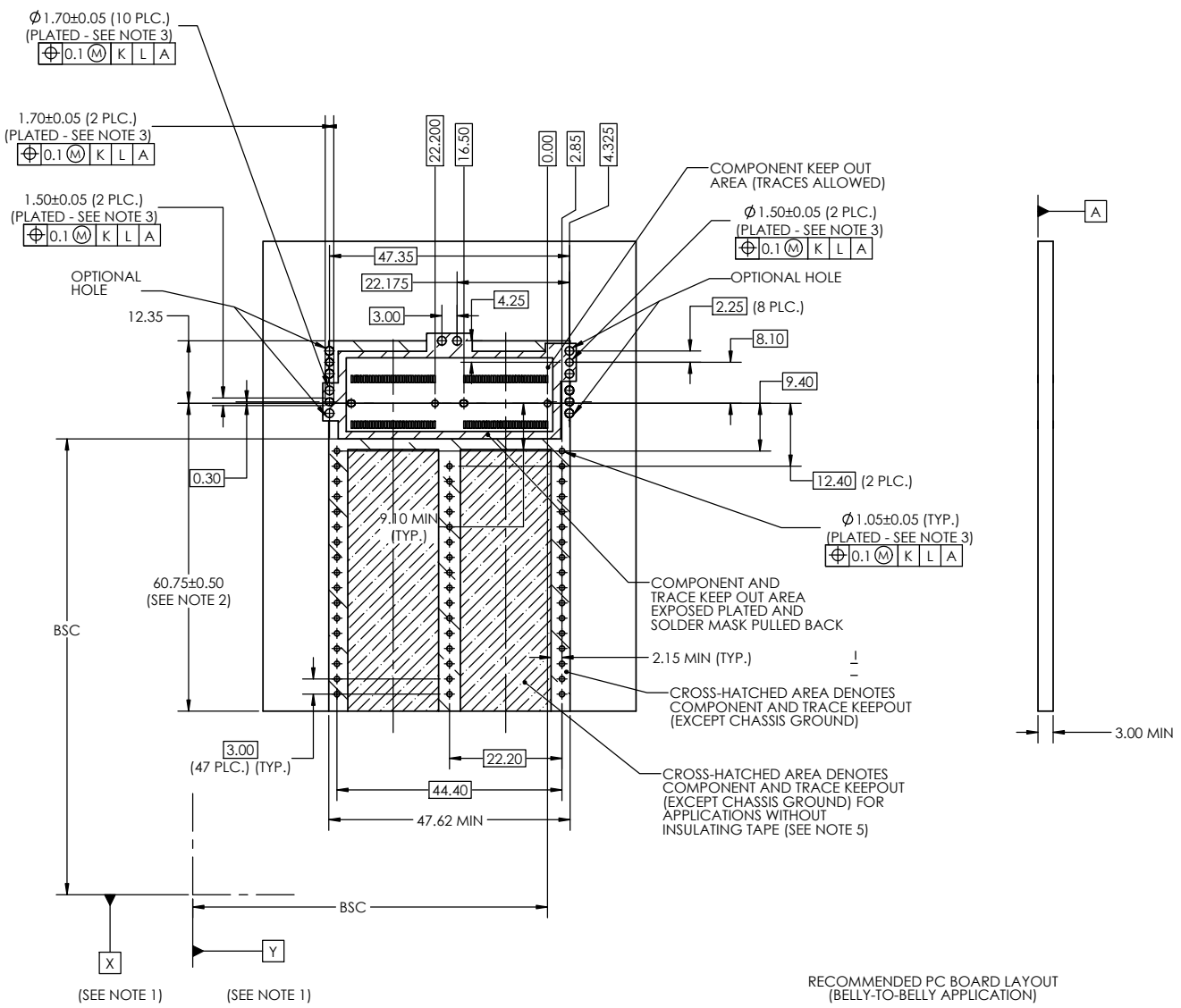
**Amphenol High Speed Interconnects**  
A Division of Amphenol Corp. [www.amphenol-highspeed.com](http://www.amphenol-highspeed.com)

**CFP4 2 PORT CAGE ASSEMBLY WITH PRESS FIT PINS**

DWG. NO. **P-U98-C2XX-X0XX** REV **C**

CODE ID NO. 03554 | DWG SIZE: C | SCALE: 3:2 | SHEET 2 OF 4

REVISIONS			
REV	DESCRIPTION, ECN, EAR NO.	DATE	APPD
C	SEE SHEET 1.	APR23/15	CM



RECOMMENDED PC BOARD LAYOUT (BELLY-TO-BELLY APPLICATION)

- NOTES:
- DATA X AND Y ESTABLISHED BY CUSTOMER'S FIDUCIAL.
  - LOCATION OF EDGE OF PCB IS APPLICATION SPECIFIC.
  - FINISHED HOLE SIZE.
  - REFER TO DETAIL C ON SHEET 2 FOR SOLDER PAD AND PLATED ZONE DIMENSIONS.
  - COMPONENTS AND TRACES IN INDICATED AREA ARE ONLY ALLOWED FOR APPLICATIONS WITH INSULATING TAPE.



UNLESS SPECIFIED OTHERWISE	DRAWN	A.SMITH	AUG28/14
PRIMARY UNITS INCHES	CHECKED	C. MICHLIK	SEP12/14
SECONDARY MILLIMETERS	M.E. APPD		
REFERENCE IN PARENTHESES	Q.A. APPD		
GENERAL TOLERANCES	DWG APPD	C.MICHLIK	SEP12/14
1 DECIMAL PLACE $\pm 0.15$	ENG. REL. NO.	TBD	
2 DECIMAL PLACES $\pm 0.10$	REF.		
3 DECIMAL PLACES $\pm 0.050$	THIRD ANGLE PROJECTION		
ANGULAR DEGREES $\pm 1^\circ$	DO NOT SCALE DRAWING		

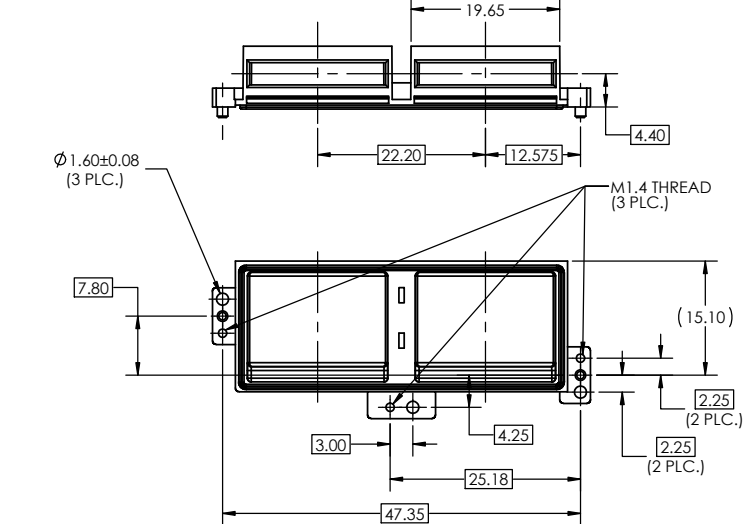
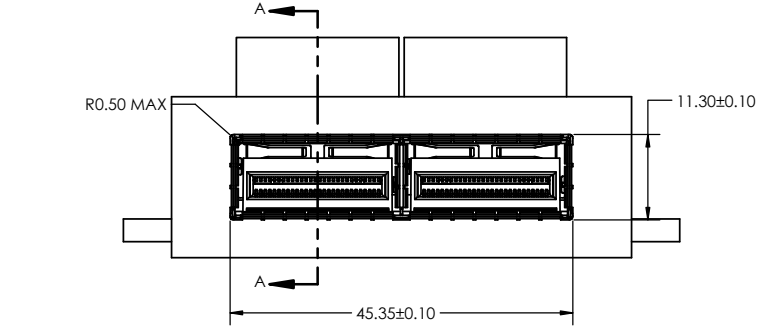
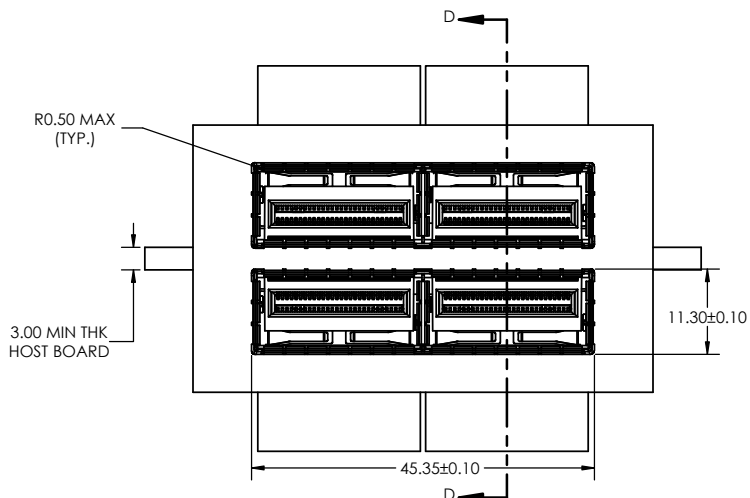
**Amphenol High Speed Interconnects**  
A Division of Amphenol Corp. [www.amphenol-highspeed.com](http://www.amphenol-highspeed.com)

**CFP4 2 PORT CAGE ASSEMBLY WITH PRESS FIT PINS**

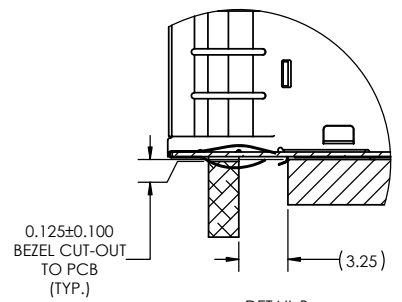
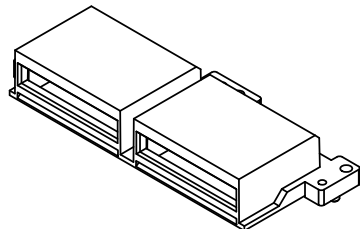
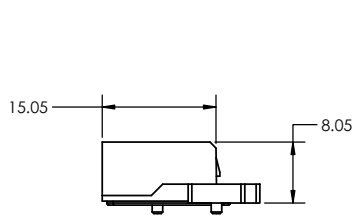
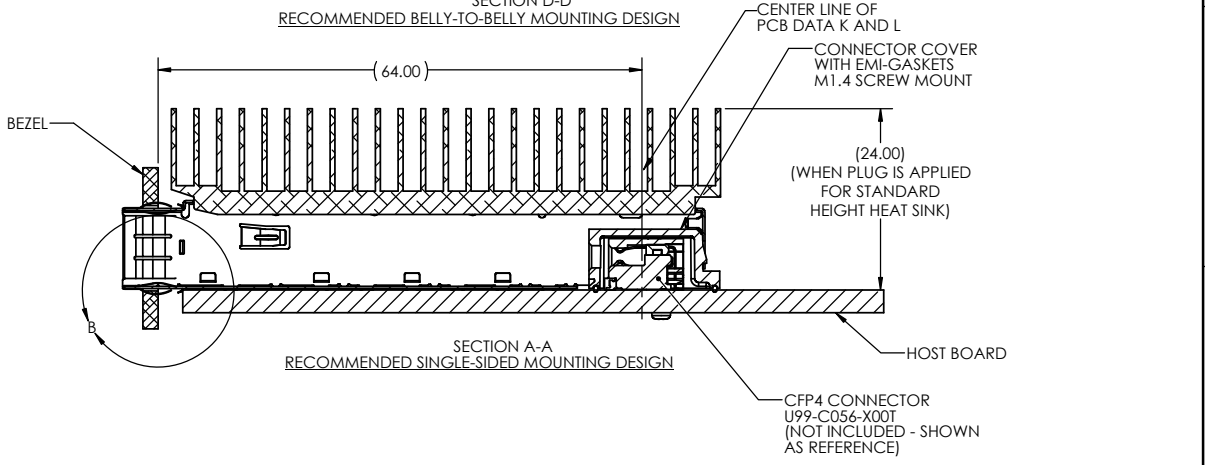
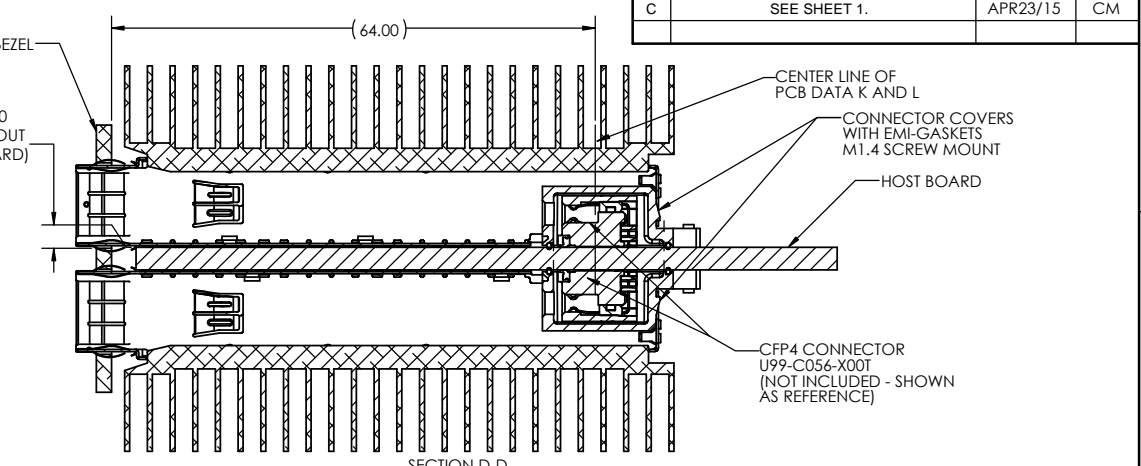
DWG. NO. **P-U98-C2XX-X0XX** REV **C**

CODE ID NO. 03554 DWG SIZE: C SCALE: 3:2 SHEET 3 OF 4

REVISIONS			
REV	DESCRIPTION, ECN, EAR NO.	DATE	APP'D
C	SEE SHEET 1.	APR23/15	CM



CONNECTOR COVER (OPTIONAL)  
(SHIPPED WITH MOUNTING SCREWS  
IN SEPARATE PACKAGING)



UNLESS SPECIFIED OTHERWISE	DRAWN	A.SMITH	AUG28/14
PRIMARY UNITS INCHES	CHECKED	C. MICHLIK	SEP12/14
SECONDARY MILLIMETERS	M.E. APP'D		
REFERENCE IN PARENTHESES	Q.A. APP'D		
GENERAL TOLERANCES	DWG APP'D	C.MICHLIK	SEP12/14
1 DECIMAL PLACE ±0.15	ENG. REL. NO.	TBD	
2 DECIMAL PLACES ±0.10	REF.		
3 DECIMAL PLACES ±0.050	THIRD ANGLE PROJECTION		
ANGULAR DEGREES ±1°	DO NOT SCALE DRAWING		

<b>Amphenol High Speed Interconnects</b> A Division of Amphenol Corp. <a href="http://www.amphenol-highspeed.com">www.amphenol-highspeed.com</a>			
<b>CFP4 2 PORT CAGE ASSEMBLY WITH PRESS FIT PINS</b>			
DWG. NO.	<b>P-U98-C2XX-X0XX</b>		REV <b>C</b>
CODE ID NO.	03554	DWG SIZE: C	SCALE: 2:1 SHEET 4 OF 4

THIS DOCUMENT CONTAINS PROPRIETARY INFORMATION AND SUCH INFORMATION MAY NOT BE DISCLOSED TO OTHERS FOR ANY PURPOSE OR USED FOR MANUFACTURING PURPOSES WITHOUT WRITTEN PERMISSION FROM AMPHENOL CANADA CORP.