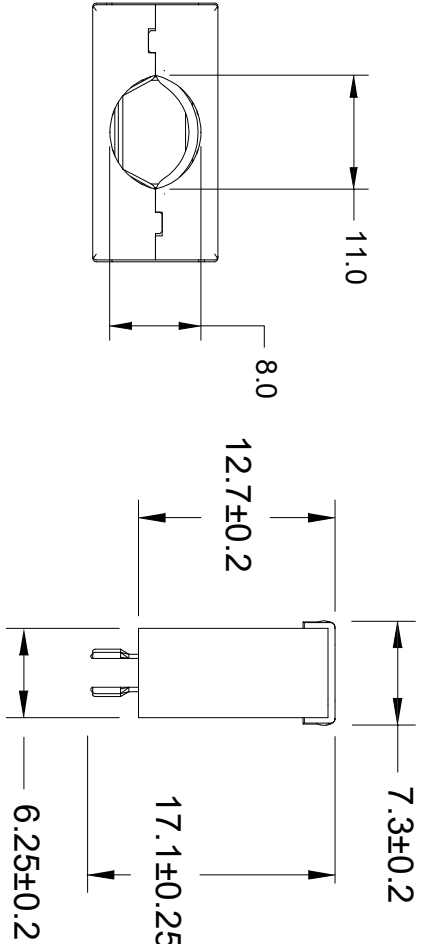


• ELECTRICAL CHARACTERISTICS

Contact Current Rating: 1 Amp
 Dielectric Withstanding Voltage: 500V AC
 Insulation Resistance: 500MΩ/Min
 Contact Resistance: 35mΩ/Max
 Operation Temperature: -25°C ~ +85°C

6	SCREW	STAINLESS STEEL	PLANTING IN 80u-200u"
5	TERMINAL	COPPER ALLOY	CONTACT FINISH OVER-PLATING: Au 30u"(Min.) SOLDER FINISH OVER-PLATING: Au G/F
4	WRENCH SPRING	STAINLESS STEEL	PLANTING IN 80u-200u"
3	SHELL	SPCC (T=0.50mm)	PLANTING IN 80u-200u"
2	COVER	ABS	COLOR: BLACK
1	HOUSING	PBT+30%G.F., UL94V-0	COLOR: BLACK



QUALITY SYMBOLS

□ :
 ☒ :
 ▽ :
 ▽ :
 ▽ :

Tolerance
 X : ±0.80
 .X : ±0.50
 .XX : ±0.30

NAME: SM 10P Male Solder Type Connector
 PART NO. B01-010311A1-01

REV: A
 UNIT: mm
 DRAW BY: CHK BY: APP BY: DRAWING NO. B01-008

SCALE: N:1
 DATE: 2016/07/14
 DAW NHU KING ZHOU

东莞市箐围电子有限公司

△	QUALITY SYMBOLS	CRITICAL	MAJOR
△	DATE	2016/07/14	新版发行
△	DESCRIPTION	King Zhou	
△	APPROVER	King Zhou	
△	ZERO DEFECT	S.P.C	

8	7	6	5	4	3	2	1
---	---	---	---	---	---	---	---